



**CASA
VERTIGO**

Established 1924 :: Re-established 2010



Our **history** speaks for itself. We **live and breathe**

advocating **the good life**,

drinking in **sights and sounds** of the day,

indulging all of the senses,

while appreciating **the finer things...**

and doing it all with a little bit of **style**.



About Us

The undeniably unique Casa Vertigo is at once Downtown Los Angeles's best kept secret and most versatile venue. Boasting over 80,000 total square feet and three floors of truly dynamic event spaces, including a penthouse and rooftop featuring panoramic views of downtown and the Hollywood Hills, the possibilities to conceptualize are truly endless.

The landmark historic building features a multitude of spaces that together act as a blank canvas suitable for special events, filming, concerts, weddings, editorial shoots... and just about anything else one could dream of.



History

An eclectic structure built in 1924 and designed by the firm Morgan, Walls & Morgan, the original Odd Fellows Temple is a historic building located in the heart of downtown and less than two miles from Staples Center, the Convention Center, LA Live and Nokia Theatre. It is also conveniently located to the the Fashion, Jewelry and Arts Districts.

Originally designed as a meeting hall for the Independent Order of the Odd Fellows, also known as the Three Link Fraternity, the design is characterized by the grandiosity and elaborate ornamentation of the Beaux Arts as well as the more organic elements of Spanish Revival architecture.



ODDFELLOWS

TEMPLE



ODDFELLOWS

TEMPLE.

Our Event Spaces

As a multi-functional event space, the venue is prime to be utilized in just about any capacity... think of it as a blank canvas upon which to endlessly create.

- Soaring 20 foot ceilings
- On-site parking for 250+ guests and/or vendors
- Prep kitchens located on first, second and third floors
- Grand ballroom
- Easy valet drop-off
- Multiple highly visible permitted advertising points on exterior structure to tie in marketing opportunities for events
- Stages on first and third floors
- Ballroom with built-in catwalk on second floor
- Office, meeting, green rooms and production spaces
- Penthouse attached to 13,000 square foot rooftop overlooking downtown Los Angeles (currently permitted for filming only)

Types of Events

- Corporate Events
- Concerts
- Weddings
- Filming
- Photo Shoots
- Conferences
- Expos
- Fashion Shows



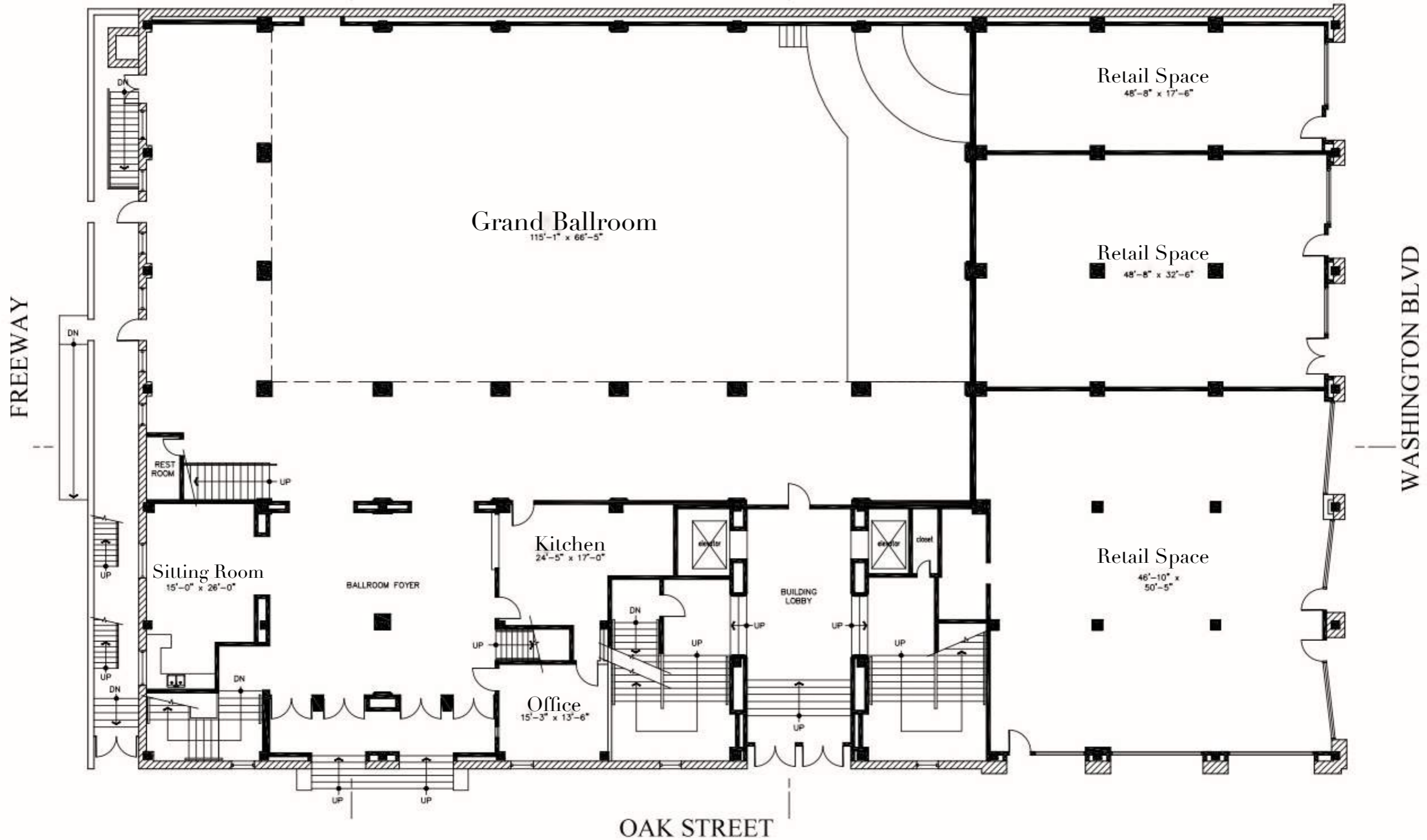
First Floor ::
Grand Ballroom, Mezzanine, Foyer & Green Rooms



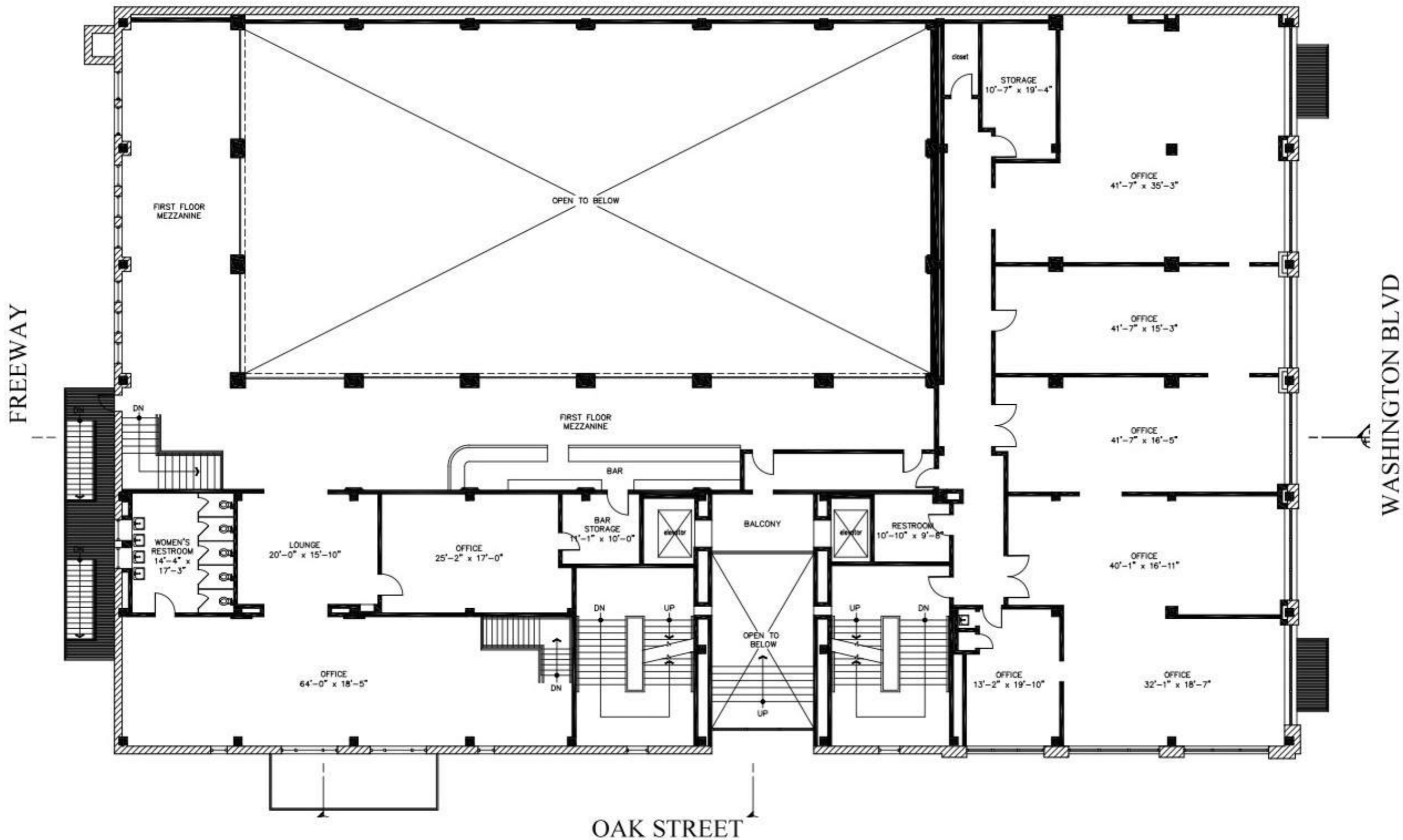




First Floor Plans



First Floor Mezzanine Plans



Dimensions & Capacities

- Grand Ballroom & Mezzanine: 115' x 66'
 - Ballroom: 8,379 sq.ft.
 - Accompanying Mezzanine: 2,533 sq.ft
 - Total sq. ft.: 10,912
 - Capacity: 1,300 standing / 500 seated
- Green Room / Break-Out Space 1: 41'-7" x 35'-3"
- Green Room / Break-Out Space 2: 41'-7" x 15'-3"
- Green Room / Break-Out Space 3: 41'-7" x 16'-5"
- Green Room / Break-Out Space 4: 40'-1" x 16'-11"
- Two adjoining offices: 32'-1" x 18'-7"

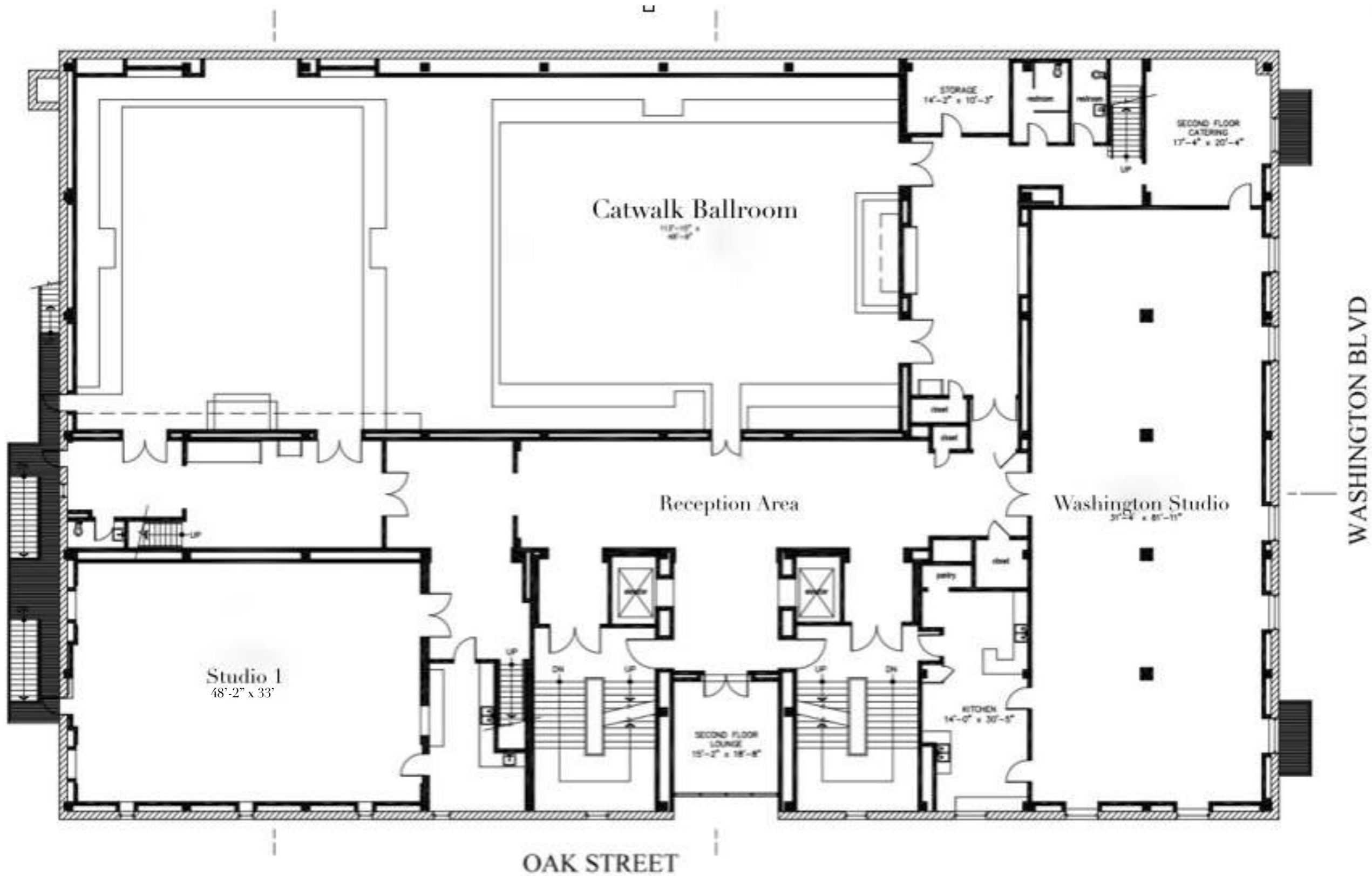
Second Floor ::

Catwalk Ballroom, Washington Studio & Studio I

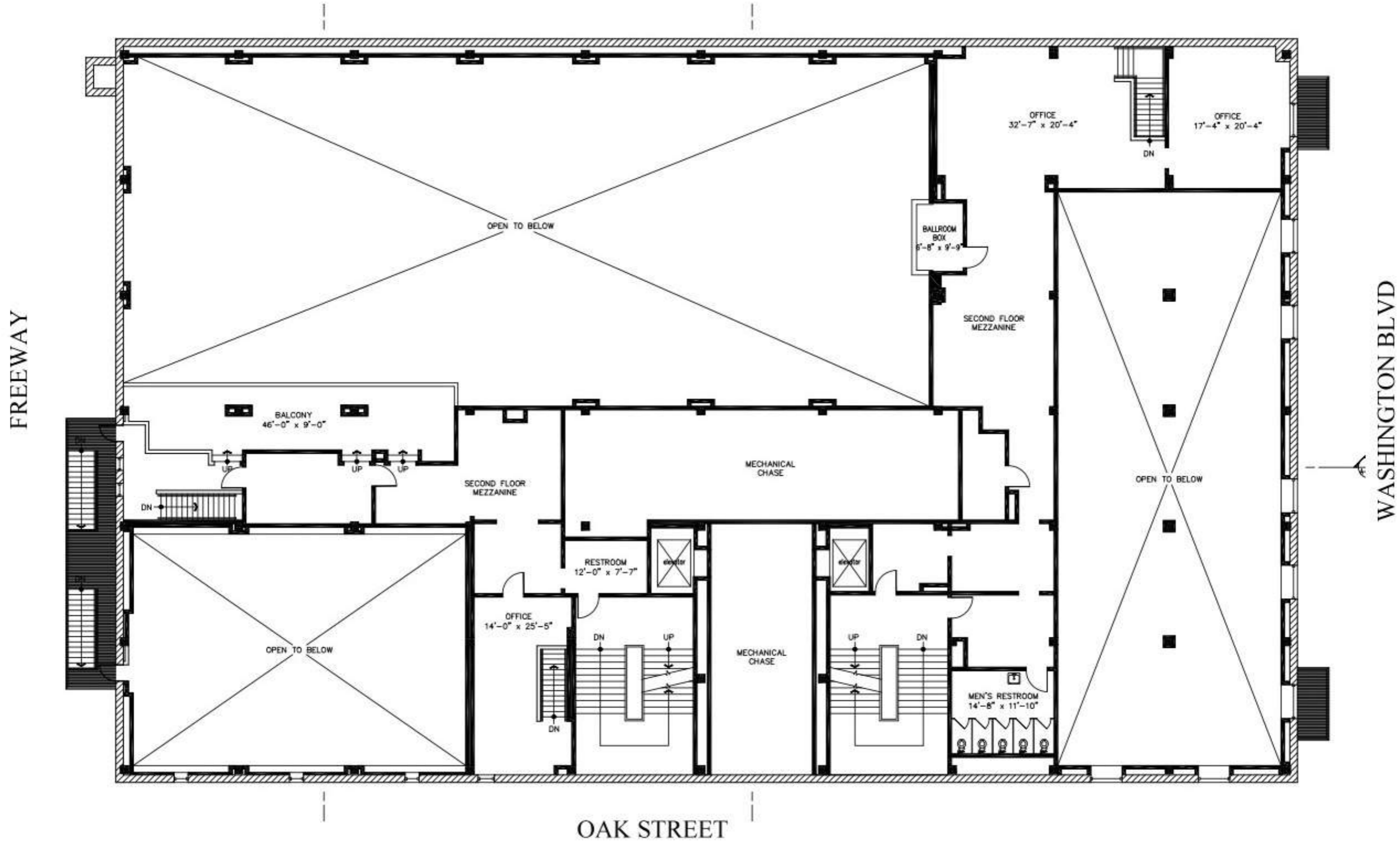




Second Floor Plans



Second Floor Mezzanine Plans



Dimensions & Capacities

- Catwalk Ballroom: 113'-10" x 48'-9"

- Ballroom: 5,553 sq.ft.

- Accompanying Balcony: 46' x 9' sq.ft.

- Accompanying Box: 6'8" x 9'9" sq.ft.

- Total sq. ft.: 5,553 sq.ft.

- Capacity: 500 standing / 250 seated

- Washington Studio: 31'-4" x 81'-11"

- Total sq. ft.: 2,613

- Capacity: 300 standing / 150 seated

- Studio I: 48'-2" x 33'

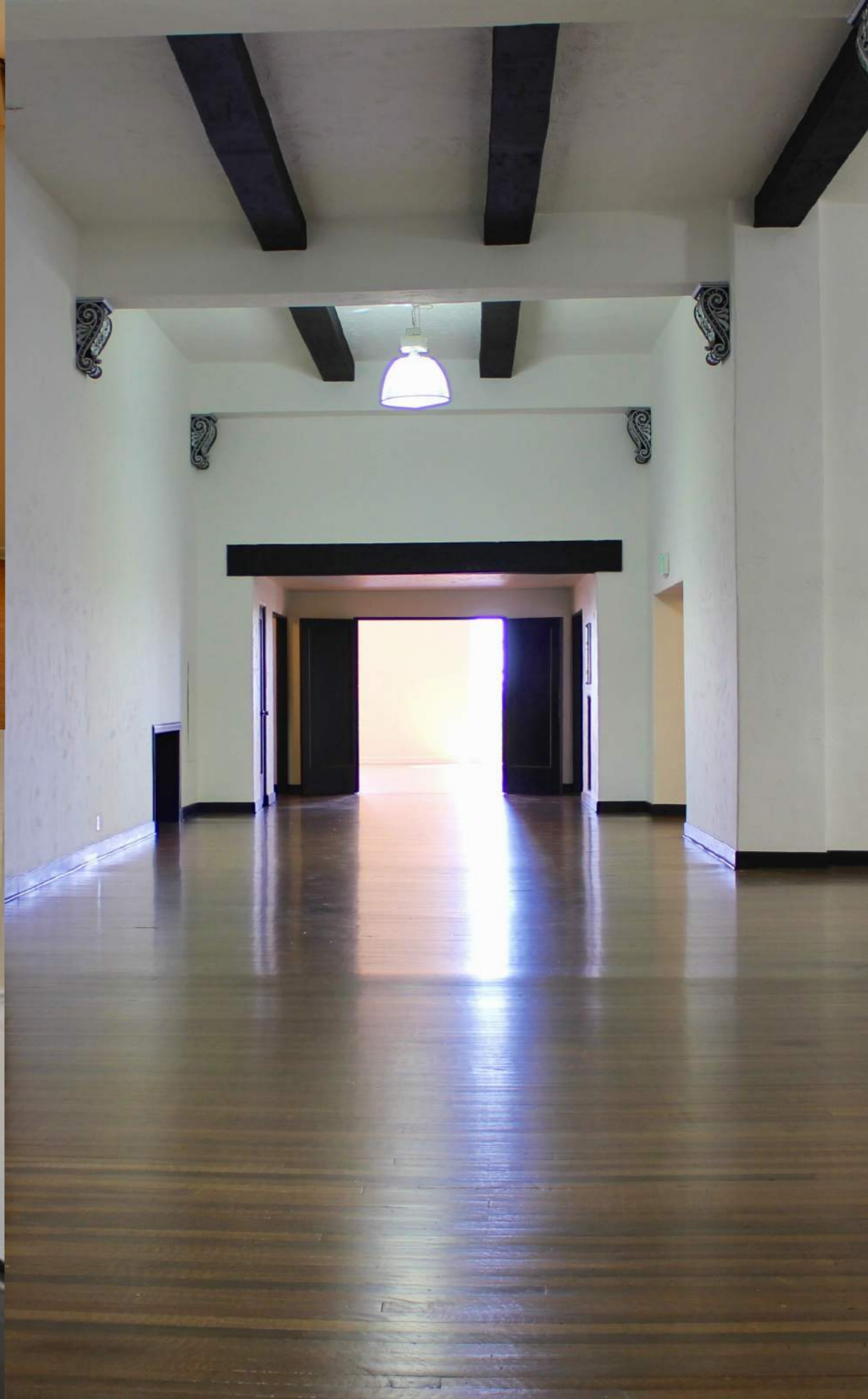
- Total sq.ft.: 1,569

- Capacity: 180 standing / 90 seated

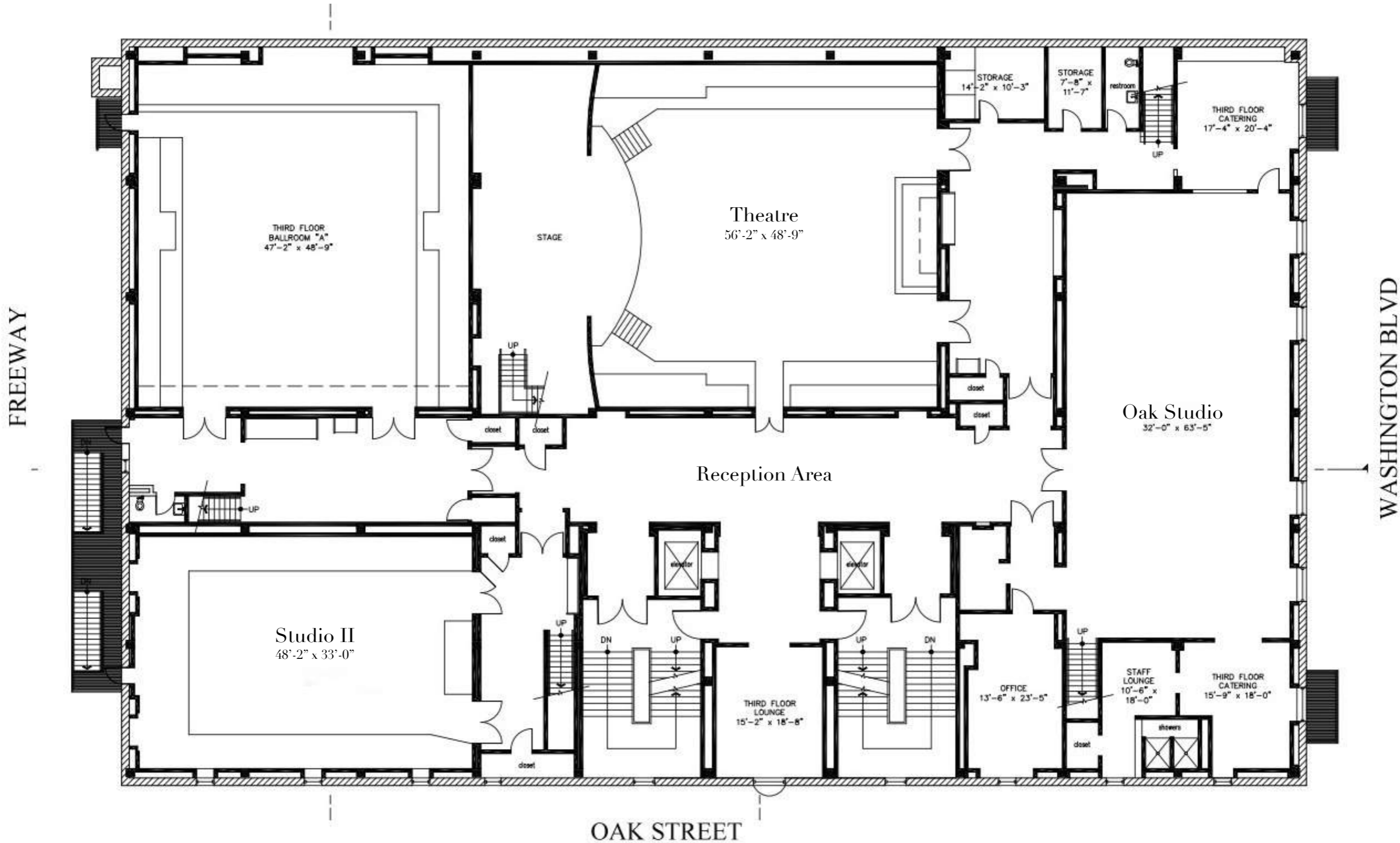
Third Floor ::

Theatre, Oak Studio & Studio II

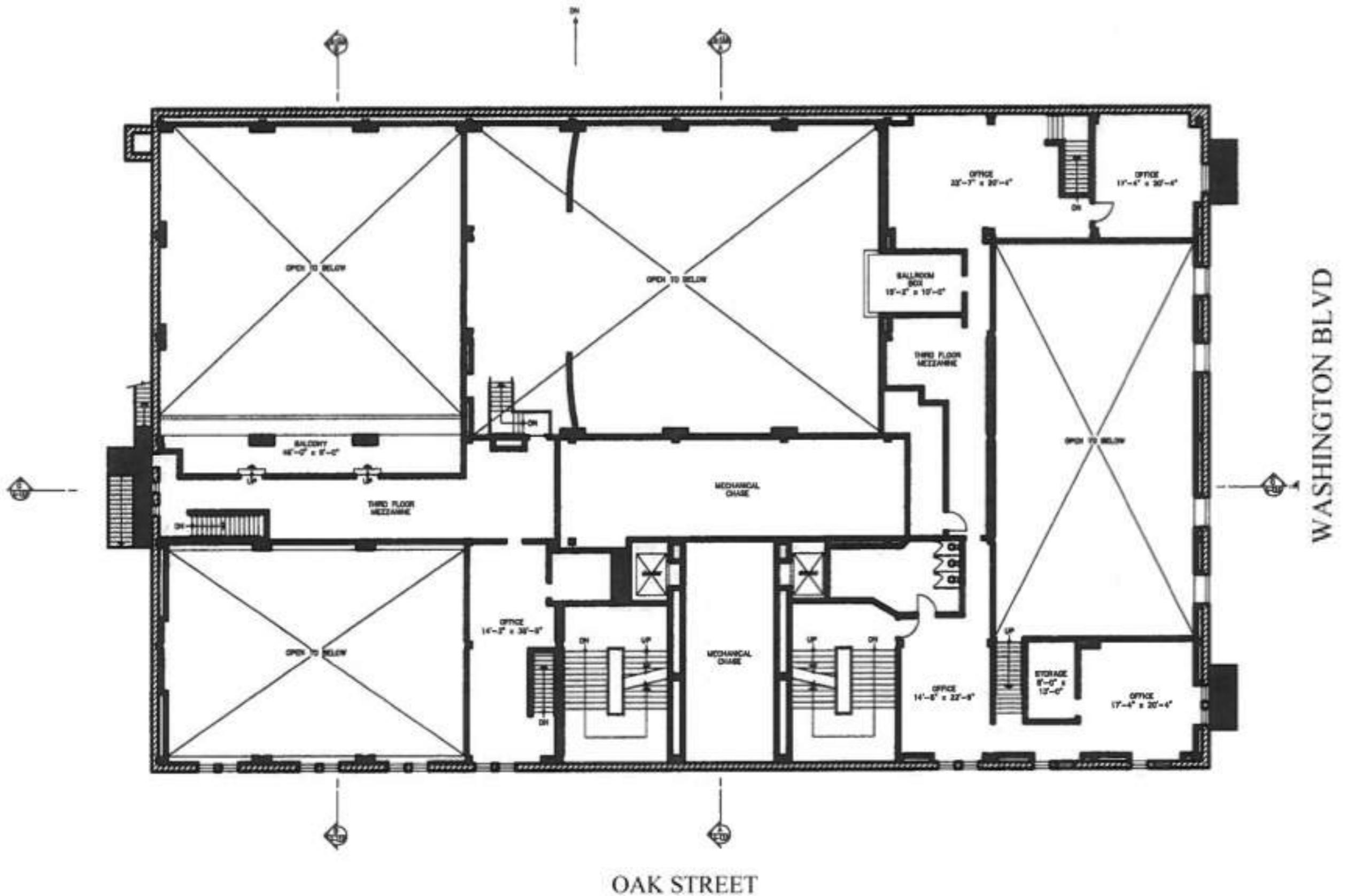




Third Floor Plans



Third Floor Mezzanine Plans



Dimensions & Capacities

- Theatre: 56' x 48'
 - Total sq. ft.: 2,688
 - Capacity: 170 standing / 80 seated
- Oak Studio: 32' x 63'-5"
 - Total sq. ft.: 2,016 sq.ft.
 - Capacity: 225 standing / 110 seated
- Studio II: 48'-2" x 33'
 - Total sq. ft.: 1,584
 - Capacity: 175 standing / 55 seated

Penthouse & Rooftop





Penthouse Floor Plans



Dimensions & Capacities

- Rooftop: 13,000 sq. ft
- Room 1: 12'-3" x 11'
- Room 2: 13'-4" x 17'-5"
- Room 3: 10' x 15'-5"
- Room 4: 8'-10" x 15' x 5"

Preferred Vendors

Contact

Maria Caballero
Operations Director
O: 213.746.4490
mariamaria@casavertigo.com



Oak

DANCING
TONITE
ENTRANCE
649 ST

14-10