



MUSIC HALL CENTER FOR THE PERFORMING ARTS

Rental Package

MUSIC HALL CENTER FOR THE PERFORMING ARTS

IS A MAGNIFICENT, FULLY RESTORED 1928 HISTORIC THEATRE SEATING 1731 WITH FOUR UNIQUE LOUNGE AREAS.

MUSIC HALL PLAYS HOST TO A VARIETY OF THEATRICAL AND NON-THEATRICAL EVENTS, INCLUDING CORPORATE ANNUAL MEETINGS, PARTIES, RECEPTIONS, PHOTO, MOVIE & TV LOCATION SHOOTS, BENEFITS, AND FUNDRAISERS.

MUSIC HALL IS KNOWN AS “THE PEOPLE’S THEATER” AND WE CAN HELP YOU WITH ALL OF YOUR EVENT NEEDS.

WE THANK YOU FOR YOUR CONSIDERATION AND LOOK FORWARD TO ASSISTING YOU.



BASE RENTAL FEES:

| | |
|---|---------|
| Main Hall and Main Lobby | \$5,000 |
| Aretha's Jazz Café (<i>Friday and Saturday inquire</i>) 20' wide x 64' deep | \$1000 |
| Selma Hyman Trustee Lounge 16' wide x 44' deep | \$500 |
| Bassett Lounge 16' wide x 44' deep | \$500 |
| Archive Gallery 22' wide x 60' deep | \$500 |
| 3Fifty Terrace (<i>except Friday and Saturday</i>) 90' wide x 50' deep | \$2,500 |

Base rental fee for a 3 hour time frame (exception of Friday and Saturday nights)

Includes the venue, 3 hours set up time , house tables and chairs, house lights, existing staging and marquee signage. Staff - Bartenders, House Manager and Wait staff – for a cash bar.

Deposit of 50% must be received one(1) week prior to event. Renter must add Music Hall to their insurance as additional insured at renter's expense

To learn more about renting the Music Hall or one of the theatre's four beautiful lounges, contact Karen McBride at (313) 887-8520, or by e-mail at karenm@musichall.org.

ADDITIONAL SERVICES:

Sound system and engineer \$400.00

Includes: microphones, cables, music stands, monitors, and mixer

Use of Selma Lounge (when renting the Jazz Café) \$250.00

Doorman and usher \$250.00

Available upon request:

Bar beverage service | Piano | Drum kit | Catering | Merchandise sales – commission negotiable

Department

Hourly Rate/ Minimum Hours

HVAC/Building Engineer \$15.00/ 4 hours

Facility Manager \$25.00/ 4 hours

Security \$25.00/ 4 hours

Cleaning Staff \$20.00/ 2 hours

House Manager \$150 / show

Ushers \$20.00/ 3 hours



MAIN HALL

Live Performance | Special
Events

PERFORMANCE SEATING CAPACITY: 1,731 SEATS

Seating Breakout:

Orchestra Pit: 30 seats

Main Floor: 807

Opera Boxes: 12 (6 each)

Mezzanine: 576

Balcony: 336

Stage Dimensions:

Wall to Wall.....44' deep x 80' wide

Proscenium opening.....41' wide x 30' tall

Grid height..... 80'

2 Loading doors... (Upstage left and right @ stage level)

Additional services:

Drapery: 5 sets of legs and borders (black), 3 full stage black drops

Grid Pipes: 53 counterweight sets @ 700# ea, 63' long

Electrical: 124 DMX dimmers @ 3.6K each (stage pin connector)

House multi cables can be placed on any counterweight set

ETC Express 72/144 Computerized lighting console

Full F.O.H. sound system

Units: Balcony rail: 16-19 degree source 4 profiles (35 circuits to stage right)

Box L & R: 8-19 degree source 4 profiles each (8 circuits to stage right)

Stage: 30 8" 1k Fresnel's

Power: 3 - 400 Amp 3 phase panels located up right

1- 200 amp Iso. down Left

Piano: 8' Baldwin Grand Piano ebonized



MAIN HALL

Special Events

MAIN HALL AND MAIN LOBBY

\$5,000

Dinner on Stage Capacity

200 Guests

Dinner on Stage Capacity with Platform Extension

350 Guests

Platform Extension

\$17,500





ARETHA'S JAZZ CAFÉ

Performance | Special
Events

ARETHA'S JAZZ CAFÉ *(FRIDAY AND SATURDAY –INQUIRE)* \$1000

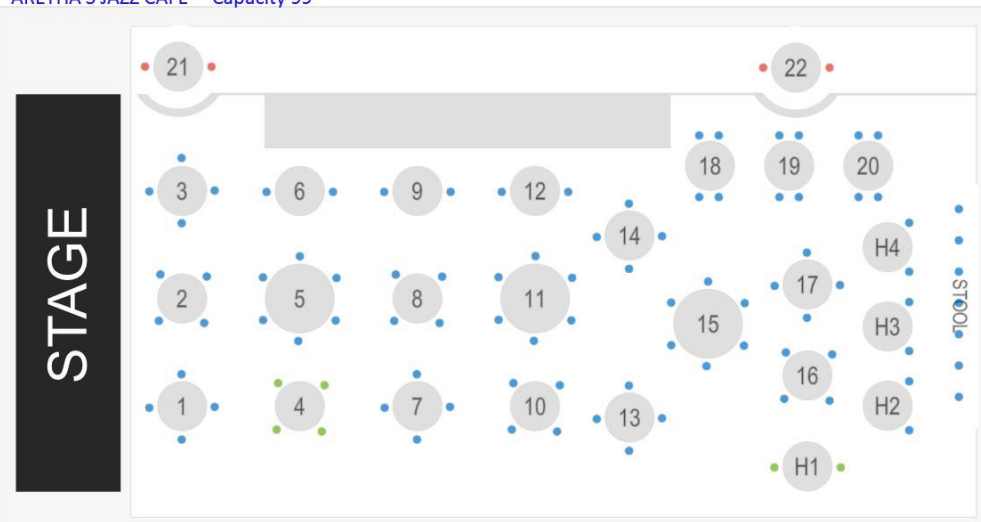
Room Dimension: 20' wide x 64' deep

Stage Dimensions: 12' deep x 16' wide

Dinner Seating Capacity 103 Guests



ARETHA'S JAZZ CAFE Capacity 99



Essex by Steinway 6' Grand Piano

Full professional Sound System

16 channel mixing board with 2 monitor mixes

Lights:

- 2 Small flat screen TV's
- 10 Lights on stage
- 12 Lights on Truss (4 dimmers)
- 20 Lights in house
- 11 Lights on back bar

Backline:

- 1 Crate BFX100 Bass Amp
- 1 Custom made standard jazz drum
- 1 Sonar Drum kit-21" Kick + Hardware
- 2 Shure SM58 / 1 Shure SM57
- 1 Shure C606 / Shure Drum mic package
- 1 AKG D790 / 1 AKG D880
- 2 ATM 450 Condenser
- 1 Sennheiser 365C
- 1 Sterling Piano Mic / 1 Sterling condenser

Aretha's Jazz Café

AT MUSIC HALL

CATERING Menu

Welcome to the Music Hall and Aretha's Jazz Café!

We look forward to catering your next event and creating a truly memorable experience for your guests in the heart of downtown Detroit's Theater District. Below are four package options for your consideration. To discuss questions, details and scheduling, please be in touch with Head Chef Colin Casey 313-887-8512 or colinc@musichall.org.

Entrée Selections

Herb Roasted Chicken
Baked Salmon
Marinated Grilled Pork Chops

Dessert Selections

Peach Cobbler
Jazz Meltdown
Bread Pudding

Side Dish Selections

Jazz Fries
Roast Potatoes
Seasonal Roast Veggies
Mac & Cheese
Crispy Brussels
Corn Bread
Sweet Soul Stringers

Package #1- \$20 Per Person (20 ppl min)

Your choice of 1 entrée, 1 side dish, and 1 dessert

Package #2 - \$30 Per Person (50 ppl min)

Your choice of 1 entrée, 2 side dishes, and 1 dessert

Package #3 - \$50 Per Person (50 ppl min)

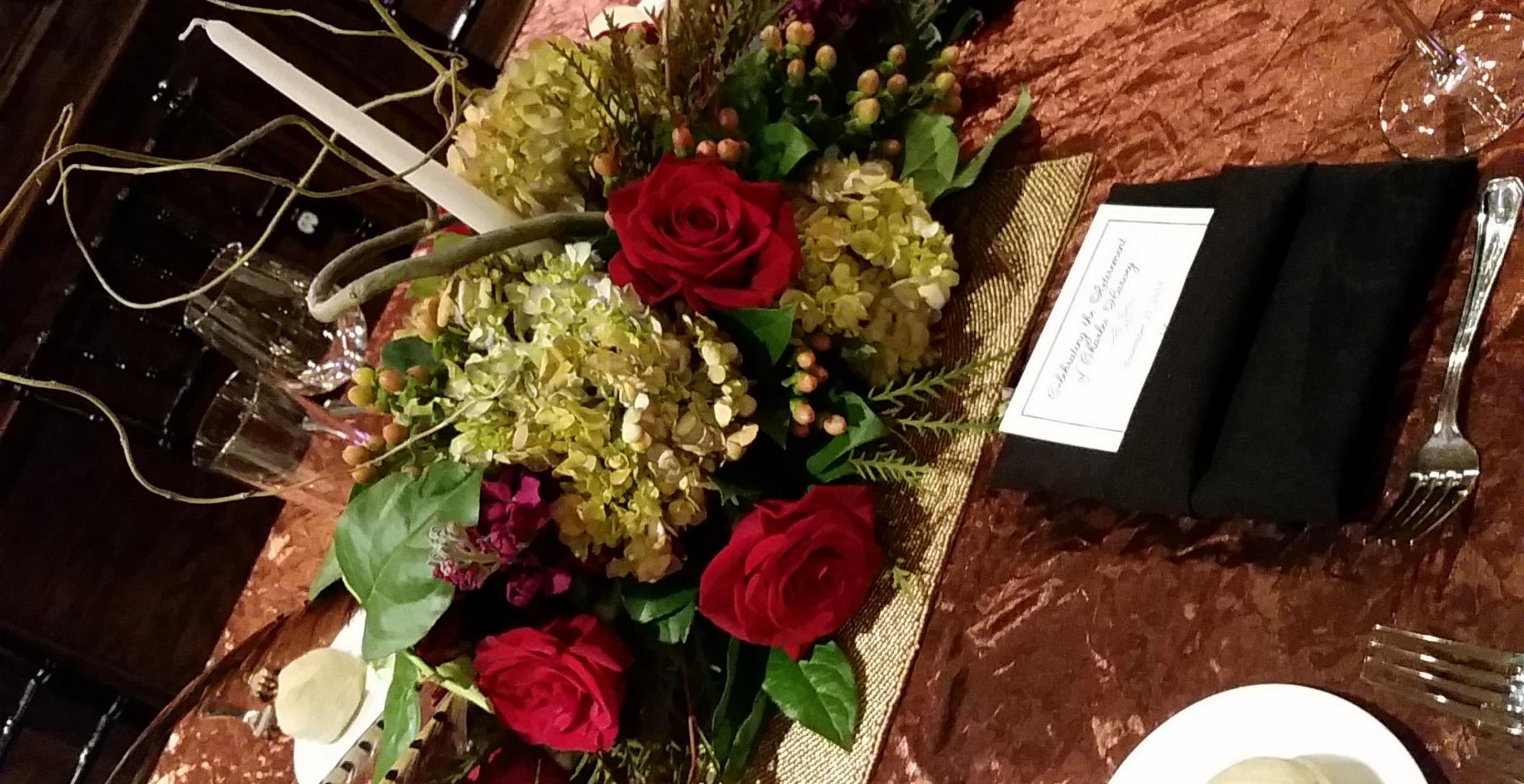
Your choice of 2 entrées, 4 side dishes, and 1 dessert. Patrons will also receive a taste of fine caviar and French baguette, paired with champagne.

Package #4 - \$20 Per Person (20 ppl min)

Your choice of 3 Appetizers from the following:
Charcuterie Plate • Chicken Wings • Caprese Skewers
Chicken Skewers • Chicken N Waffles • Potato Skins



Executive Chef, Colin Casey, will prepare catering for each special event and service is available throughout Music Hall's many lounges including Aretha's Jazz Café. Please contact Food and Beverage Manager Derek Gillis at 313 887 8500 or by email at derekg@musichall.org to make arrangements.



SELMA HYMAN TRUSTEE LOUNGE

2nd Floor

SELMA HYMAN TRUSTEE LOUNGE

\$500



Standard features:
Hardman Baby Grand Piano
Fireplace
Portable Bar
Dinning room table (seats 16)

Room Dimension: 16' wide x 44' deep

Dinner Seating Capacity: 50 Guests

Standing Reception: 80 Guests

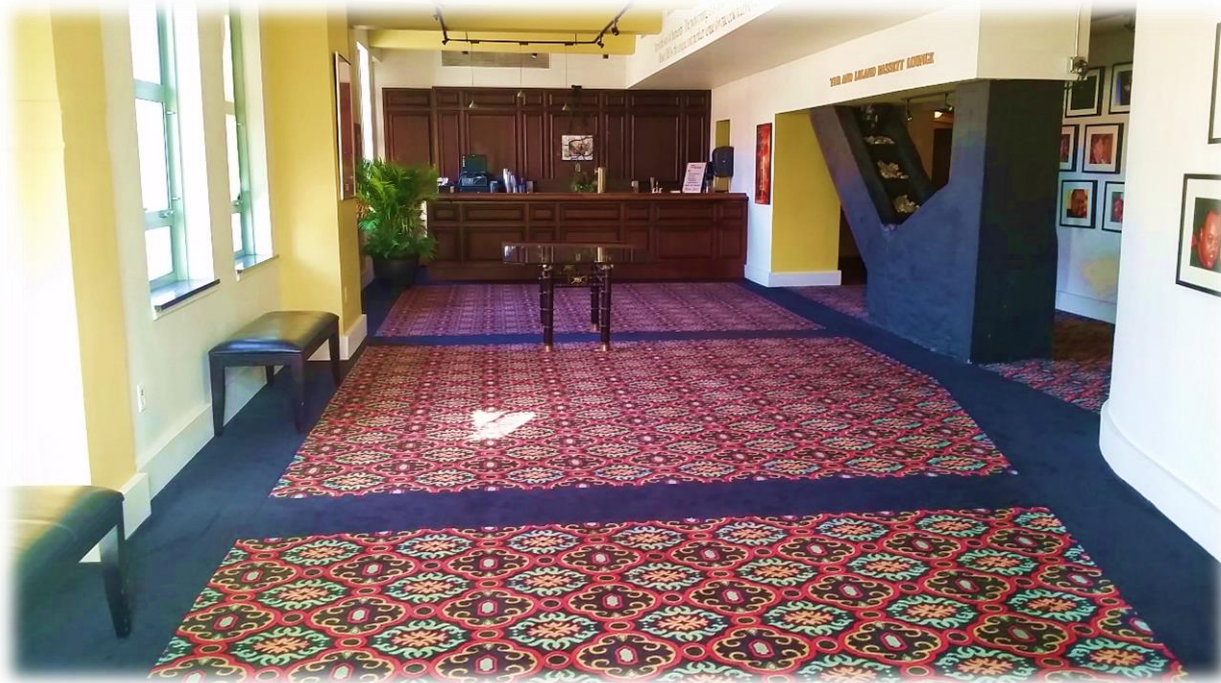


TINA AND LELAND BASSETT LOUNGE

3rd floor

THE TINA & LELAND BASSETT LOUNGE

\$500



Amenities on the 3rd floor:
Elevator access
Existing Bar
2 Ladies restrooms
1 Men's restroom

Room Dimension: 16' wide x 44' deep

Dinner Seating Capacity: 70 Guests

Standing Reception Capacity: 100 Guests



MUSIC HALL ARCHIVE GALLERY

5th Floor
Lounge

MUSIC HALL ARCHIVE GALLERY \$500



Amenities on the 5th floor:
Elevator access
Portable Bar
**22 Programmable
Mural canvases**
Custom Cinerama
1 Ladies restrooms
1 Men's restroom



Room dimensions: 22' wide x 60' deep

Capacity: 80 Guests strolling



3 FIFTY TERRACE AT MUSIC HALL

Rooftop Terrace

3FIFTY TERRACE *(EXCEPT FRIDAY AND SATURDAY)* \$2,500

Open air rooftop terrace at Music Hall offers a view like no other. Located within walking distance of notable Detroit landmarks such as Comerica Park, Ford Field, The Detroit Opera House and The Detroit Athletic Club, 3Fifty Terrace features 11,000 sq. ft. of unique rooftop, open air space to host your special event. 3Fifty offers the full array of amenities to host any type of event. Amenities include an expansive granite top bar, resort style booths, and well appointed restroom facilities.

Site dimensions: 90' wide x 50' deep Capacity: 322 Guests Dinner Capacity: 200 Guests



ARETHA'S JAZZ CAFE \ MUSIC HALL BEVERAGE PACKAGES

NON-ALCOHOLIC PACKAGE

\$7 Per Person*

Includes Soft Drinks, Coffee and Hot Tea

BEER AND WINE PACKAGE

\$15 Per Person*

Includes Non-Acoholic Package.

Domestic Bottled Beers (i.e. Budweiser, Bud Light, Miller Lite) House Wine (2 White and 2 Red choices)

STANDARD PACKAGE

\$22 Per Person*

Includes Non-Acoholic Package Well Liquors Including Vodka, Gin, Whiskey, Rum, Tequila, Brandy and certain Liqueurs

CALLS PACKAGE

\$30 Per Person*

Includes the Standard Package with the addition of Call liquors and Liqueurs (i.e. Dewars, Absolut, 1800 Silver, Bacardi etc.)

Includes 3 House white and 3 House Red wines. Includes Imported and Craft Beers and includes an upgrade in available Liqueurs

PREMIUM PACKAGE

\$38 Per Person*

Includes the Calls Package with the addition of Premium Liquors (i.e. Grey Goose, Bombay Sapphire, Hennessy VS, Crown Royal etc.) Includes all available Liqueurs

TOP SHELF PACKAGE

\$45 Per Person*

Includes Premium Package with the addition of All top Shelf Liquors (i.e. Remy Martin VSOP, Patron, Glenmorangie etc.)

Also includes upgraded wine selections

**Per Person costs are based on our standard rental period of 3 hours for performance \ service. All Packages include appropriate glassware and are based on a 3 hour time period. *An 18% gratuity will be added in addition to the per person package cost. For more information on bar pricing please contact Derek Gillis, Beverage manager for Music Hall at 313-887-8512 or by email at DerekG@musicHall.org*

No outside beverages permitted.

Box Office

Music Hall Center has two internet options available to purchase tickets. Tickets are available on www.Musichall.org and www.Ticketmaster.com. Box Office hours are Monday through Friday from 10:00AM to 6:00PM. The Box Office is also open two hours prior to each performance and until intermission on performance nights. Please contact Cindy Morgan at 313-887-8501 for specific information.

Access

Accessible seating is available in the orchestra level of the theatre. Patrons requiring special assistance or seat removal should inform the Box Office prior to purchasing tickets.

Posters and Displays

Posters may be created for your event. There are four frames in front of Music Hall. The window cases accept posters 36" by 66". Easels are also available. They are adjustable and accommodate most sizes. We traditionally use 24" by 36" posters.

Stage Labor

Music Hall operates under agreements with the International Alliance of Theatrical Stage Employees (IATSE), Locals #38 and #786. All stage work connected with a production will be covered under the terms of that agreement. Stagehands will be used for all work on temporary platforms installed in the auditorium of the theatre as well as the stage.

Policies

Music Hall is a non-smoking environment.

Caterers/Special Event Rentals

Renters may use any outside caterer and event rentals companies. If needed, Music Hall can provide a list of preferred vendors.

Loading Dock

Dock is located on the west "alley side" of the building and will accommodate trucks higher or lower than standard dock height. An aluminum walk ramp (capacity: 1,000 lbs.) is available for drop frame trailers. The House does not provide forklifts.

Truck Parking

The loading dock alley will accommodate two 53' trailers, back to back by way of a platform. The Brush side of the building can also accommodate an additional two 53' trailers in the same fashion for short periods of time. When parking trucks on the street, it is recommended that drivers remain with the tractors. Long-term trailer accommodations can be made upon request.

Video

Music Hall has video equipment in-house to accomplish a number of specific tasks. A balcony rail mounted camera feeds the stage manager's console and a number of backstage and lobby monitors with a show program feed.

Wardrobe

300 sq. ft. wardrobe room at basement level. 3 Washers, 2 Dryers Rolling wardrobe racks available upon request

STAGE & EQUIPMENT

Stage Floor: Tongue and groove oak covered plywood. Limited screwing and lagging allowed with approval.

Stage: 80' wide x 44' deep (3,520 sq. ft.)

See plans for actual shape and details. The entire stage floor can be configured in traps

Proscenium: 30' high x 40'. 6" wide

Orchestra Pit: Ample space for 30 musicians

Ballet Barres: (5) 12'

Rigging & Fly System

Counterweight System: 53 line-sets (60' long), plus one stage left and right tab set

Line travel: 80 ft.

Arbor capacity 1,900 lbs. including batten weight

Lock Rails located SL on fly loft level (3rd floor)

Six lift lines per set.

Additional hang points located down stage of plaster line.

Gridiron

80 ft. above stage level. Grid surface is structural steel grating

STAGE EQUIPMENT CONTINUED

House Curtain

Burgundy velour

Guillotine only. Center split for paging.

Counterweight hand set operates from stage left

Stage Draperies

All draperies, other than grand drape require additional rental fees.

(1) Black scrim

(1) White plastic rear projection screen

(1) White cyc

Black Velour

5–10' wide x 30' high pair of legs

5–60' wide x 10' high borders

2–60' wide x 30' high Black Out curtains

Gold Velour

5–10' wide x 30' high pair of legs

5–60' wide x 10' high borders

Storage Space

Storage of empty boxes is limited to stage and green room. Consult with the Technical Director to discuss individual needs.

Lighting

All lighting equipment other than basic power requires additional rental fees.

Power

Three 400A, 3ph Company switches USL

One 200A, 3ph isolated ground switch for sound (SL)

Control

ETC Express 72/144 is currently housed back stage Left.

Normally used FOH Center at the rear of the main orchestra level

Dimming

124 dimmers are located on Stage Left 2nd floor above control area.

Instrument Inventory

- (7) Far cyc 3 channel units
- (16) 750w Par wide flood
- (26) 19° ETC Source 4 ellipsoidal (Front-of-House)
- (19) 26° ETC Source 4 ellipsoidal
- (18) 36° ETC Source 4 ellipsoidal
- (1) 50° ETC Source 4 ellipsoidal
- (32) 8" 1k W Fresnel

Additional Lekos are dedicated FOH for curtain warmers

Cable and Accessories

- (1) Genie lift

Miscellaneous Cable

- 8 Boom Bases
- B size Template holders
- 6 Ladders

Follow Spots

- 3 – Super troopers, 208v units

Sound & Video

FOH Console: DDA-CS3, 4 Buss, 6 Aux, 32 Channel (Analog)

Outboard

- (2) DbX 231 (2 Ch. 31 Band 1/3rd Octave EQ)
- (1) DbX 166 XL (2 Ch. Compressor/ Limitor)

Speakers

- Speakers Bose F-1 812 line array system
- 2 cabinets per side
- 2 subs built in to the walls of the theatre
- 1 center cluster
- 96db out of the speaker with little to no drop off at the back wall

Snake

32 Channel, 8 Aux Whirlwind Snake:

Amplifiers

- 16 Channel Makie 1604 mixing console,
- (2) Crown Power Amps

Microphones

- Wireless: (2) Sennhieser EW100 Handheld
- Wired: Miscellaneous Shure Mics (SM57)

Playback

CD/DVD/Cassette Players as necessary

Power

200A isolated ground service at SL. Service is 200A

Paging

A dressing room paging system is installed. Microphone is down stage left. An emergency paging system is located in the storm lobby, front of house at elevator station.

Hearing Impaired System

A Williams hearing impaired system is installed for the auditorium. There are currently 5 headsets available.

Intercom/Communications

Clearcom CS-210 Main Station 2 ch

CS-100 Main Station

501 Belt-Pack

(4) Wired Headsets

HME RW 800 Base Station

(4) Wired BH 800 Belt-Pack

Orchestra Chairs and Stands Available for Rent

40 black padded straight chairs

7 bass stools

18 Manhasset music stands

Dressing Rooms

Stage Level

Principal/Star dressing room with a washroom and shower in each: suitable for 1-2 performers

Basement

Men's and Women's washrooms and showers

2 star dressing rooms

Three Chorus dressing rooms suitable for up to 12 performers each

Green Room Lounge: 750 sq. ft.

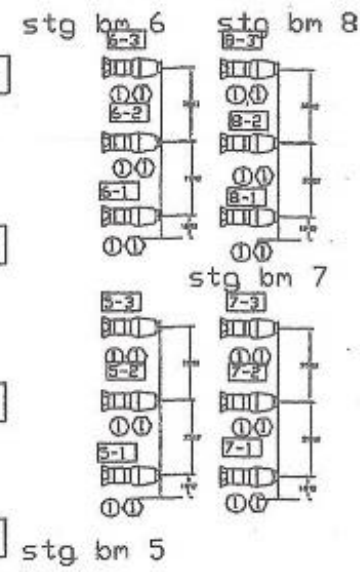
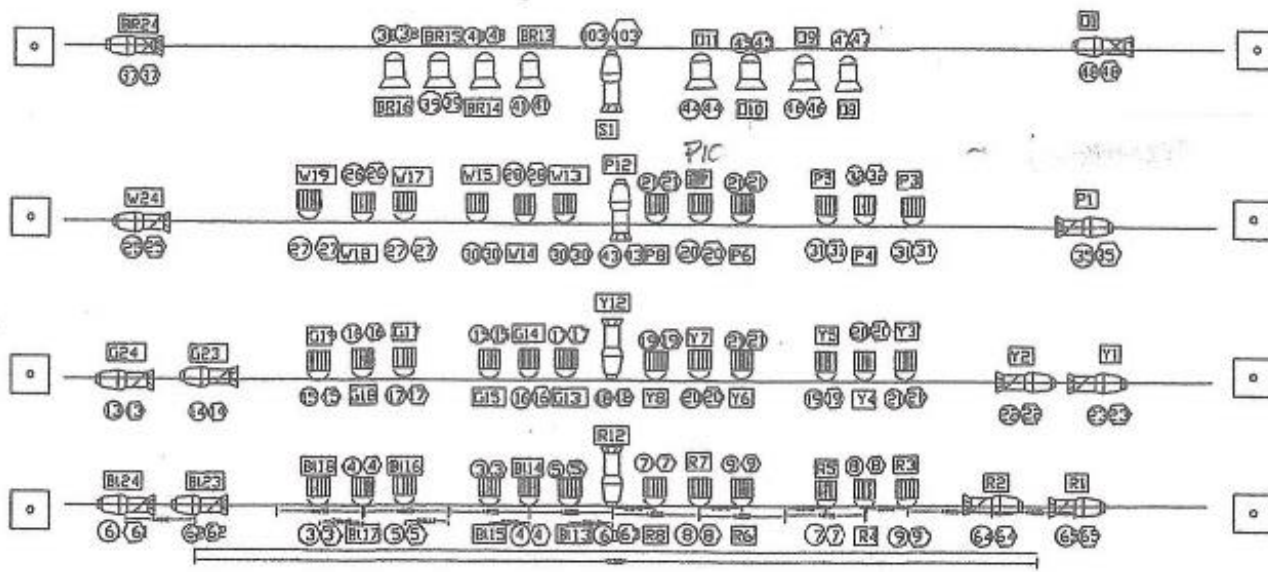
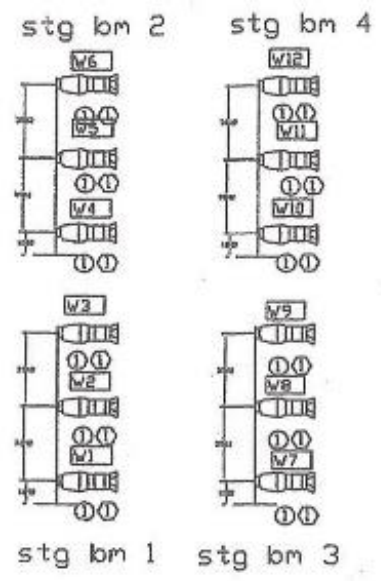
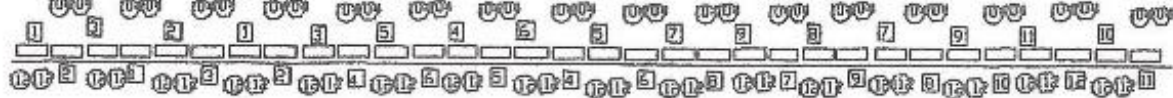
Second, Third and Fourth Level

Room 1: 60 sq. ft. with washroom attached: suitable for 2 performers

Room 2: 60 sq. ft. with washroom attached: suitable for 2 performers

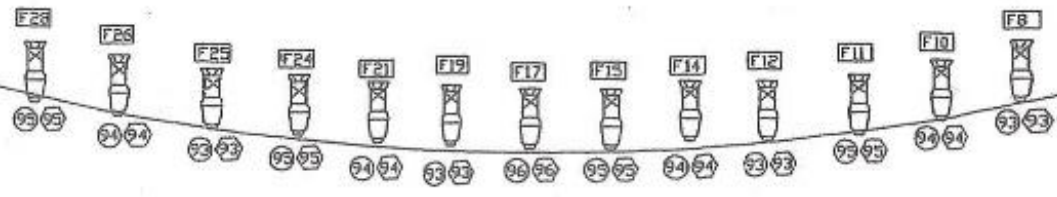
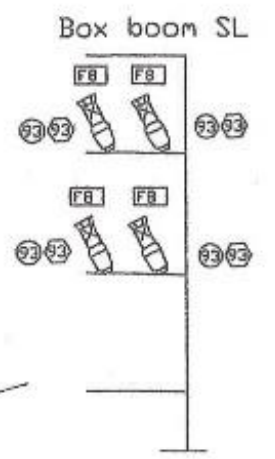
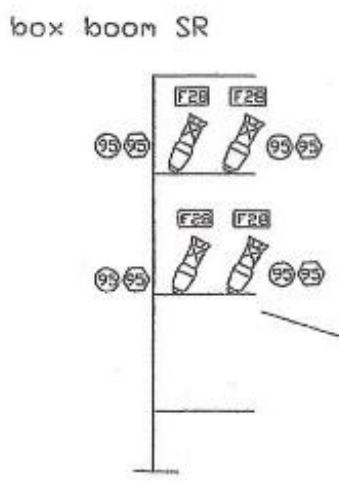
Room 3: 60 sq. ft. with washroom attached: suitable for 2 performers

Room 4: 60 sq. ft. with washroom attached: suitable for 2 performers



KEY

| | | | |
|---|-------------------------|-------------------------|----------------|
| 10° Fresnel | Source 4 leko 19 degree | Source 4 leko 36 degree | Circuit number |
| PAR 64 medium | Source 4 leko 26 degree | Source 4 leko 50 degree | Dimmer number |
| <p>Music Hall center for the performing arts</p> <p>artistic dir. Vince Paul T.D. David Reynolds II</p> | | | |



Note: recommended plot, always check inventory on page 23

