

8

8

Royal  
**PALMS**

SHUFFLEBOARD  
**CHICAGO**

7



7

V E N U E  
B U Y O U T S



# SHUFFLEBOARD 101

## 15% SKILL AND 85% STRATEGY

They say shuffleboard takes two minutes to learn and a lifetime to master... And that's without taking into account your Piña Colada consumption. It's pretty hard to be bad and impossible shots are almost always possible.

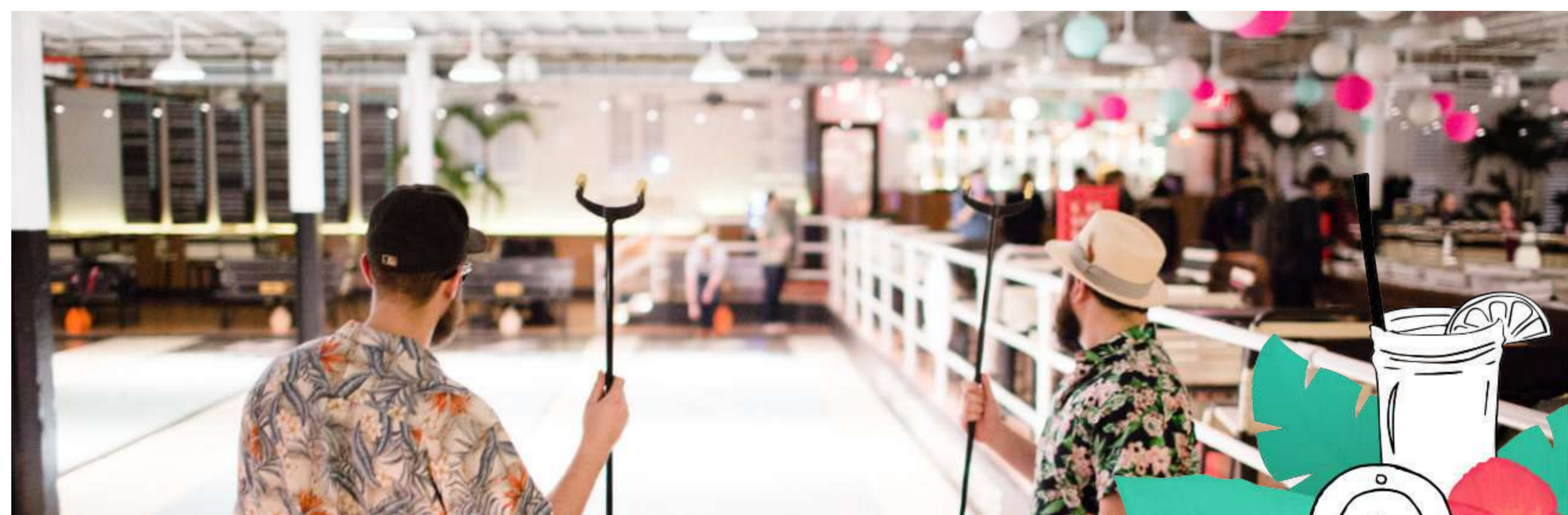
You'll get a quick lesson from one of our Royal Palms Shuffleboard Pros the minute you land on the courts and you'll be knocking biscuits into the kitchen in no time!

Shuffleboard is played by using "tangs" (cues) to push weighted "biscuits" (discs) down a waxed court into a scoring triangle of 7's 8's and 10's. Be careful not to push too far or you'll wind up in the kitchen - minus 10! Players alternate turns and can knock each other's biscuits into or out of scoring areas. The Hammer is the last disc of the frame (a huge advantage) so alternate who gets to go last each frame. We play 8 frame games which take about 15 minutes.

Finally and most importantly, **DO NOT WALK ON COURTS!**







# HOST A PARTY

Throw a party for a large group of people in our 17,000 sq ft, vintage Florida inspired Shuffleboard Nightclub on the sandy shores of Chicago.

	Ideal # Of People	Site Fee	Drink Minimum	Shuffleboard Courts	Cabanas	Stocked & Staffed Bars	Bring Your Own Dj	Duration (Hours)
Full	<b>200-500</b>	<b>\$10,000</b>	<b>\$16,000</b> BEVERAGE PACKAGE REQUIRED	<b>ALL 10</b>	<b>8</b>	<b>2</b>	<b>Y</b>	<b>3+</b>
Half	<b>75-200</b>	<b>\$5,000</b>	<b>\$8,000</b> BEVERAGE PACKAGE REQUIRED	<b>5</b>	<b>4</b>	<b>1</b>	<b>N</b>	<b>3+</b>
Lido Deck	<b>50-200</b>	<b>\$5,000</b>	<b>\$20, \$25 OR \$30</b> PER PERSON/HR	<b>1</b>	<b>N/A</b>	<b>1</b>	<b>N</b>	<b>2 OR 3</b>
Cabana	<b>10-100+</b>	<b>\$100</b> PER COURT/ HR	<b>\$20, \$25 OR \$30</b> PER PERSON/HR	<b>1-3</b>	<b>1-3</b>	<b>1</b>	<b>N</b>	<b>2 OR 3</b>

Pricing above reflects Full, Half and Rooftop Space Buyouts on Sundays-Thursdays,  
all prices and policies are subject to change.  
Cabana Parties are not subject to peak day pricing.





# BOOZE PACKAGES

Check out our drink menu at  
[www.royalpalmschicago.com/drink-menus](http://www.royalpalmschicago.com/drink-menus)

**PER PERSON / PER HOUR**

**\$20**

Beer, Wine, & Well Cocktails

**\$25**

Beer, Wine, Well and Signature Cocktails

**\$30**

Beer, Wine, Top Shelf Liquor &  
The Entire Royal Palms Signature Cocktails Menu

All beverage packages include all our non-alcoholic beverages including,  
Sodas, Juices, Coconut Water, Ginger Beer and  
the best mocktails this side of the Chicago River.





# SNACKS AND CATERING

The Royal Palms is home to a one-of-a-kind Food Truck Bay where we drive Chicago's best mobile vendors right into the building and change 'em out every night! Check out the calendar on the website to see which truck we're hosting on any given night.

## FULL SPACE RENTALS

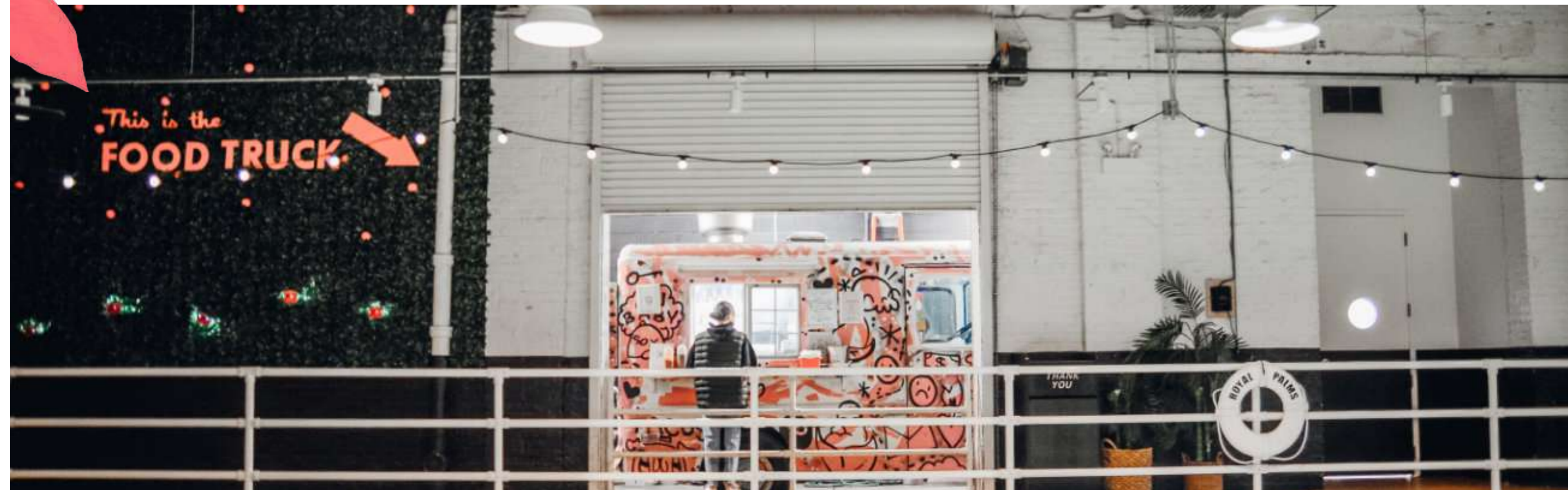
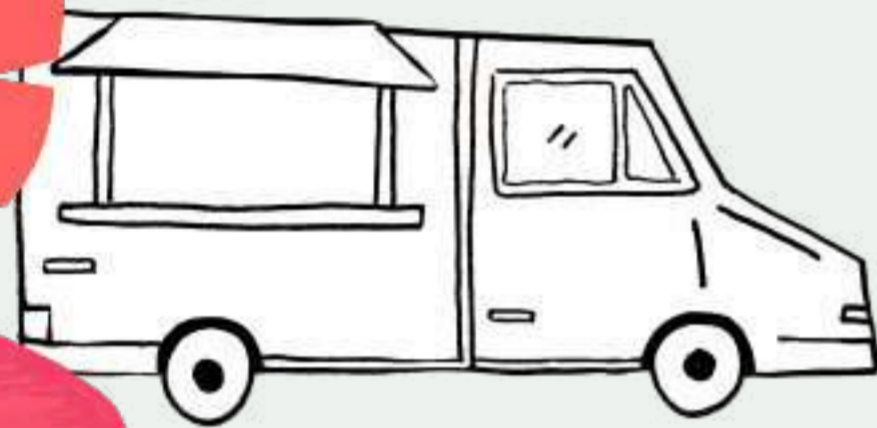
Have the opportunity to arrange your own catering. We are happy to offer any recommendations.

## HALF SPACE & ROOFTOP & CABANA PARTIES

All savory food must go through our food truck partners. You're welcome to order a la carte or set up a tab with the truck. If you'd prefer to make arrangements for catering in advance of your event, we're happy to put you in touch with the scheduled truck of the day.

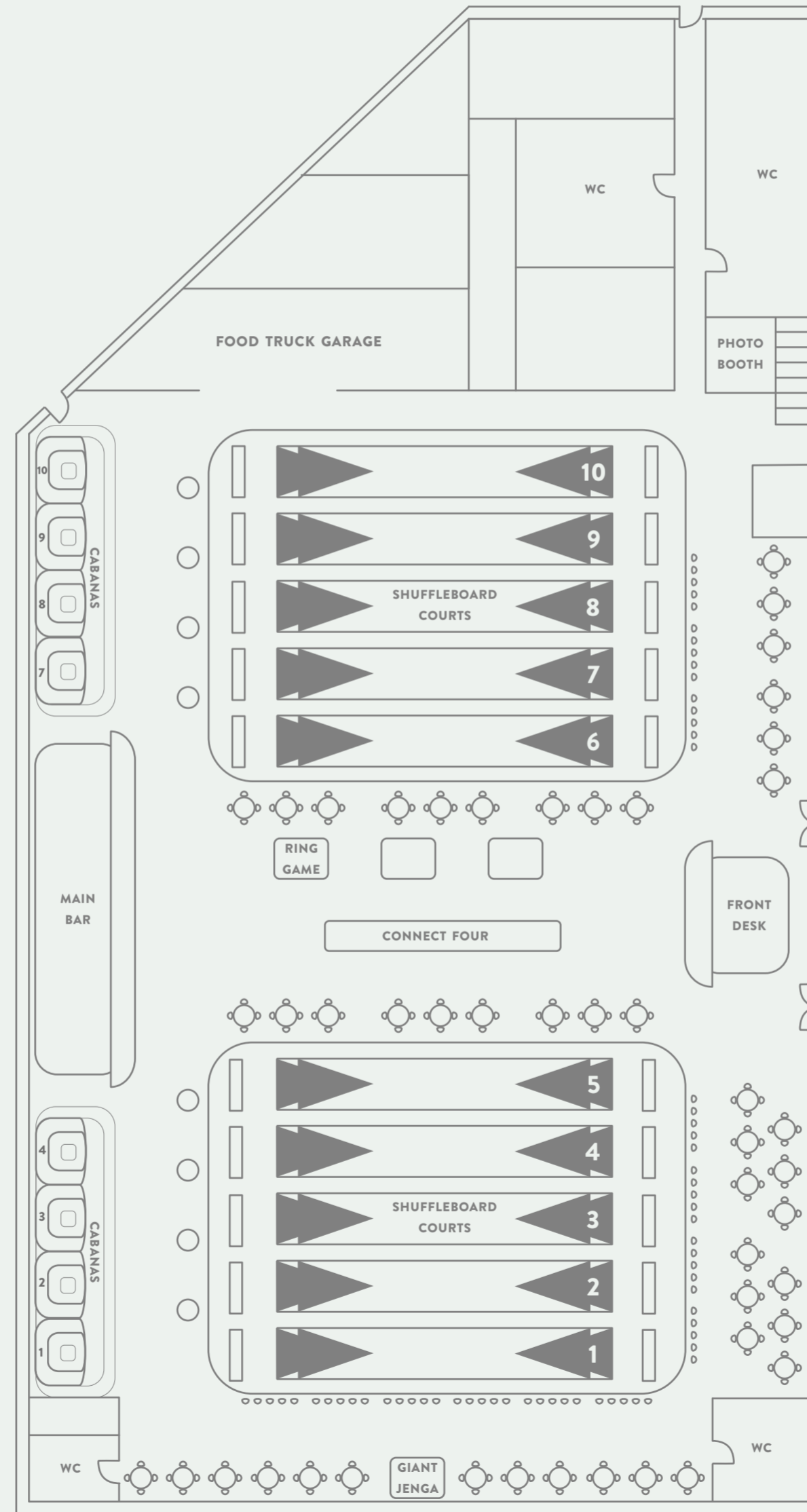
## CAKES AND SWEETS

You're welcome to bring birthday cakes or other sweets, but please be sure to bring any plates or utensils you might need as we don't stock any of that stuff.





# 200 TO 500 GUESTS FULL VENUE



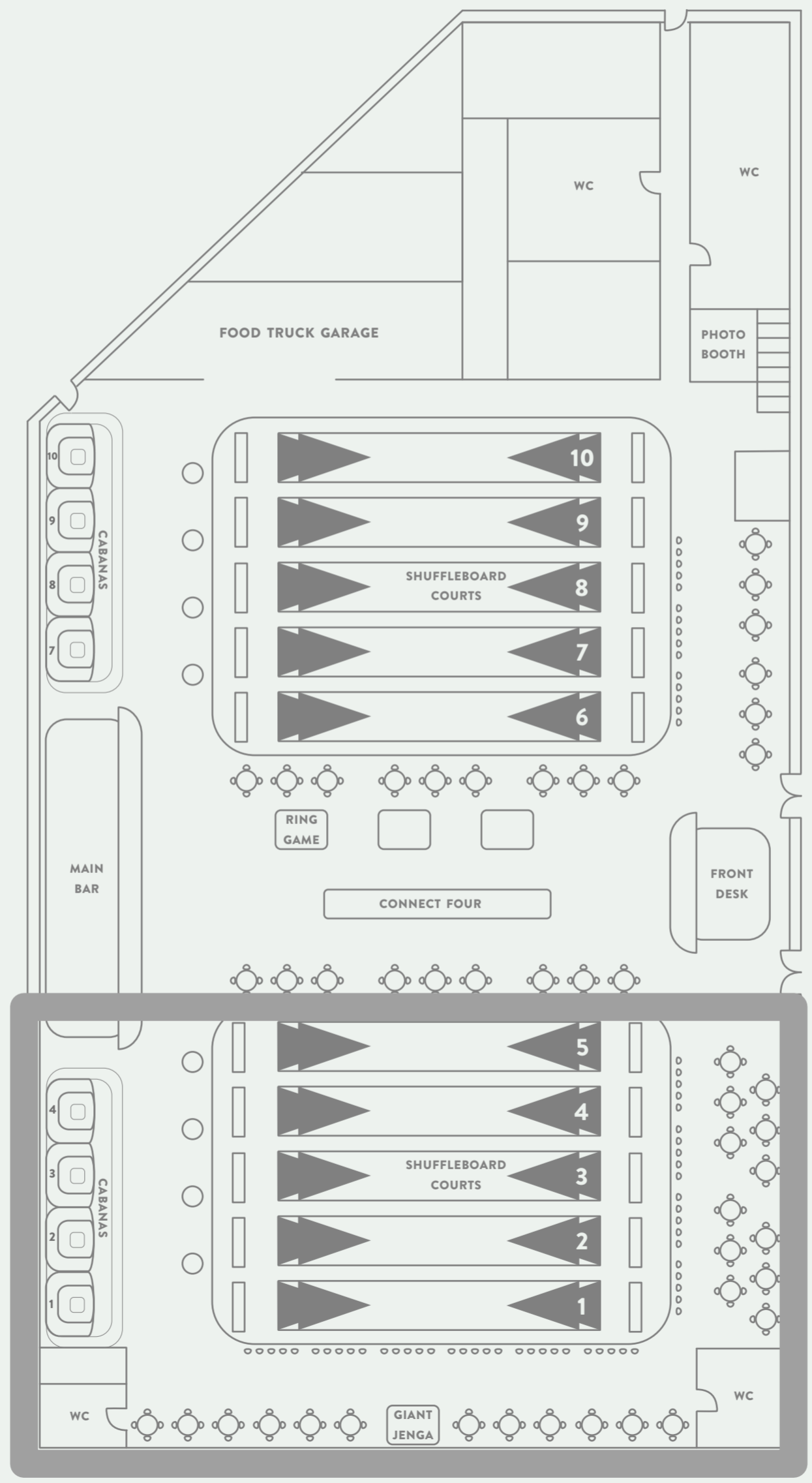
## MAIN FEATURES

- ~17,000 square feet
- 10 shuffleboard courts
- 8 cabanas
- Full service bar
- Maximum capacity of 500 guests
- Ring game, giant Jenga and giant Connect Four
- Indoor food truck garage
- 250+ seating options
- Use of food truck garage





# 75 TO 250 GUESTS HALF VENUE

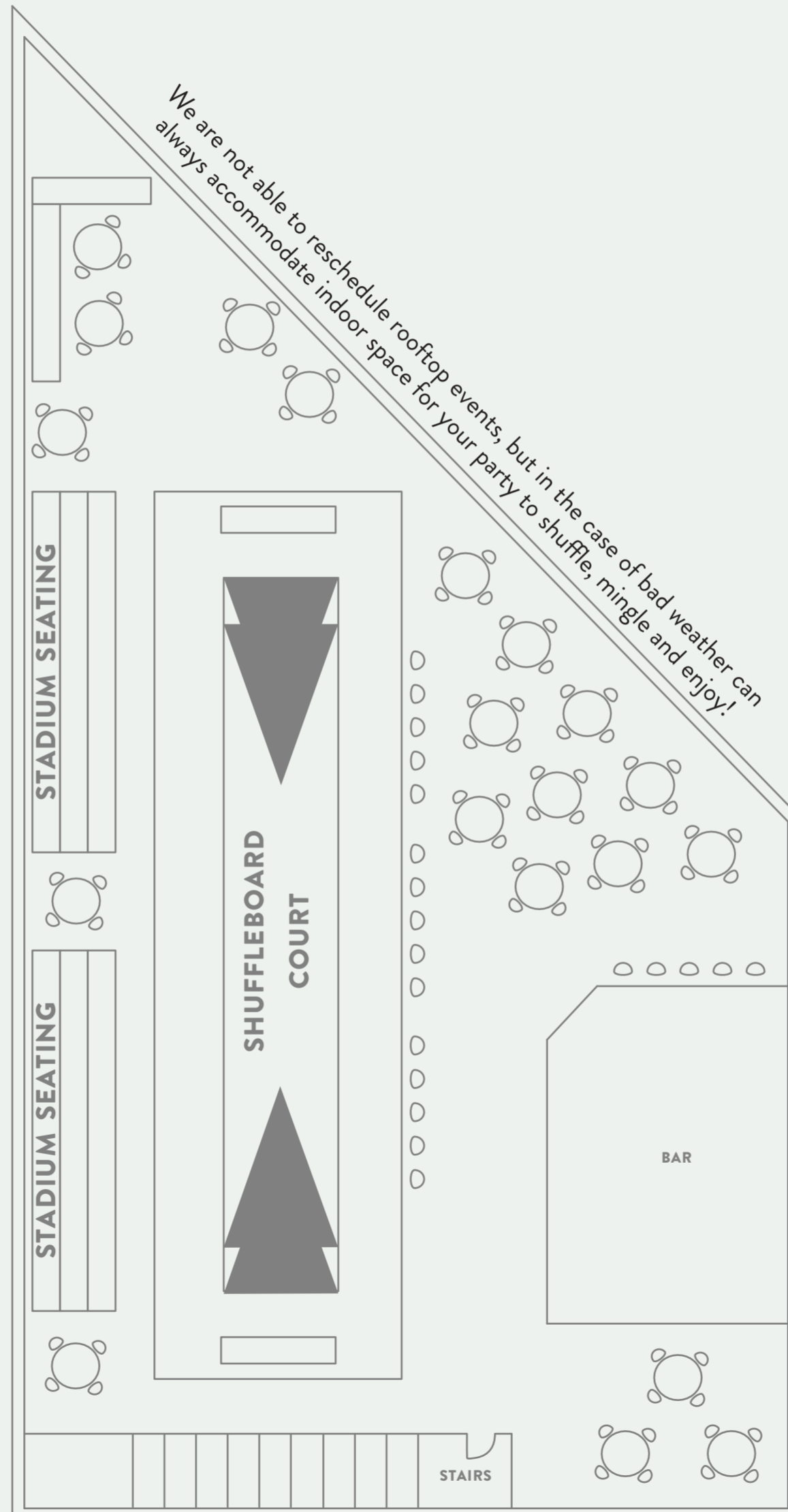


## MAIN FEATURES

- ~5,000 square feet
- 5 shuffleboard courts
- 4 cabanas
- Full service bar
- Recommended for 75-250 guests
- Ring game, giant Jenga and giant Connect Four
- Access to food truck garage
- Private bathrooms
- 125+ seating options
- Access to food truck garage



# 75 TO 200 GUESTS LIDO DECK



## MAIN FEATURES

- 1 shuffleboard court
- Full service bar
- Maximum capacity of 200 guests
- Private outdoor rooftop ~3,000 square feet
- Access to giant Jenga, giant Connect Four and board games
- Stair access to indoor food truck garage
- 100+ seating options
- View of the 606, Bucktown and Wicker Park





# Royal PALMS

SHUFFLEBOARD

## HOW WE GOT STARTED

After a spontaneous trip in the winter of 2011 to the Mirror Lake Shuffleboard Club in St. Petersburg, Florida, owners Ashley Albert and Jonathan Schnapp set out to build a shuffleboard club in Brooklyn.

By July 2012, they'd secured the lease on a 17,000 square foot warehouse in Gowanus and set about raising money to make their vintage-Florida Shuffleboard dreams come true. It took another year and a half of fundraising and kickstarting and designing and permitting before the doors to The Royal Palms were ready to open in the winter 2013.

Today, people from all over the world come to visit and fall in love with the game. The Royal Palms Monday and Tuesday Night Shuffleboard League is the largest in the world and Ashley and Jonathan are now internationally ranked shuffleboard players!

In winter 2018 The Royal Palms launched their second shuffleboard club in the Wicker Park/Bucktown area of Chicago.







# Royal PALMS

SHUFFLEBOARD

**LET'S GET  
SHUFFLING!**

EMAIL [Party@RoyalPalmsChicago.com](mailto:Party@RoyalPalmsChicago.com)

1750 N MILWAUKEE AVE  
CHICAGO, IL

[WWW.ROYALPALMSCHICAGO.COM](http://WWW.ROYALPALMSCHICAGO.COM)