



+ START  
(WITH SOME DRANKS)

# HIGHLINE BAR+LOUNGE



# HI-POINT

THE GAME LOUNGE AT HIGHLINE

169 W. KINZIE STREET | CHICAGO, IL 60654 | 312.533.2742

CONTACT: PARTY@4CBARS.COM

# HIGHLINE BAR+LOUNGE

Highline is a sleek, modern and comfortable sports bar in River North featuring upscale bar food and delicious drinks. Offering private & semi private space for up to 400 guests, the Main Bar features white washed and slatted wooden walls, stylized and comfortable furniture, raw floor treatments and exposed ceilings.

## HI-POINT

THE GAME LOUNGE AT HIGHLINE

Located on the second floor of Highline, Hi-Point is a bar-cade room that features a variety of fun and engaging arcade games for guests. HiPoint can be booked privately for parties of up to 100 and includes a full private bar, private restrooms, and an optional private entrance off of Wells Street.

### SPACES & CAPACITIES

Buyout: 400

First Floor: 250

HiPoint: 100

West Lounge: 30 seated / 45 cocktail

The Bench: 14 seated / 20 cocktail

Front Lounge - West: 35

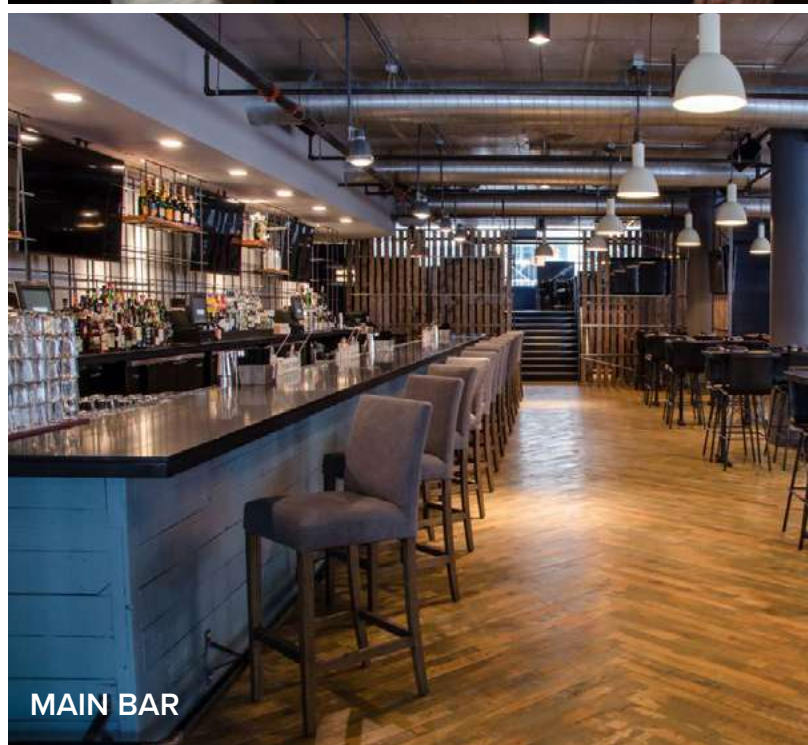
Front Lounge - East: 25

### FEATURES OF THE SPACE

- Parties of 20-400
- Full A/V (TVs & DJ)
- Free Arcade Games (HiPoint)
- Merchandise Mart Adjacent
- Sleek Modern Design
- Located next to the CTA Brown Line



HI-POINT



MAIN BAR



MAIN BAR



WEST LOUNGE  
AND BENCH



FRONT LOUNGE  
EAST AND WEST



WEST LOUNGE

# DRINKS

---

## BEVERAGE PACKAGE OPTIONS

- Per person beverage packages are available for private parties when minimum food requirement is met
- Beverage package is pre-selected by the host of the event and final guaranteed guest count determines the number of guests for the package
- Shots not included in beverage packages; can be purchased separately
- Illinois state tax & applicable service charge will be added to the total bill

## BEER AND WINE BAR

Includes all draft beers, house red, white & sparkling wine

**2 Hours** 25/pp      **3 Hours** 35/pp

## CALL BAR

Includes all draft beers, house red, white & sparkling wine, call level liquor basic mixed drinks, and 2 Signature Cocktails: Svedka Moscow Mules & House Old Fashioneds

Examples of Call Level Liquors:

Fireball, Jameson, Old Forester, Bombay Dry, Captain Morgan, Bacardi, Corazón Blanco, Svedka, Tito's, Deep Eddy, Effen, Western Son Prickly Pear

**2 Hours** 30/pp      **3 Hours** 40/pp

## PREMIUM BAR

Includes all beers, red, white & sparkling wine, call & premium level liquor basic mixed drinks, specialty cocktails and select rocks pours

Examples of Premium Level Liquors:

Maker's Mark, Jack Daniels, Bulleit (Rye & Bourbon), Johnnie Walker Black, Woodford Reserve, Basil Hayden's, Hendrick's, Grey Goose, Don Julio Silver, Casamigos (Blanco, Reposado & Añejo), Patron Silver, Banhez Mezcal

**2 Hours** 40/pp      **3 Hours** 50/pp

\*Listed brands & flavors may vary based on season and availability

## PACKAGE UPGRADES

*AVAILABLE TO ADD ON TO A CALL/PREMIUM PACKAGE*

Craft Cocktail Stations

- Moscow Mule Bar
- Bubbles Bar

Signature Cocktail

Available to greet guests upon arrival and as signature drink throughout the event

\*Listed brands may vary based on season and availability

## BASED ON CONSUMPTION

- Beverage charges will be calculated based on consumption depending on what guests order at the event
- Drinks will be placed on one bill and presented to the host at the conclusion of the event
- Event hosts are welcome to customize the beverage options offered to guests at the event by setting limitations (monetary limit and/or liquor exclusions)



# FOOD

---

## APPETIZER PLATTERS

SERVES 24 PER ORDER

Caprese Skewers	55
Mac & Cheese Bites	60
Buffalo Fried Cauliflower	60
Pretzel Bites	50
Boneless Wings	65
Quesadillas (BBQ Chicken or Fajita Veggie)	65
Avocado Toast Bites	85
Blackened Shrimp & Cucumber Skewers	85
Sweet & Spicy Pork Belly Bites	85
Marinated Steak Skewers	125
Merkt's Cheddar Mini Burgers	100
Nashville Hot Chicken Sliders	100
Mini Beyond Burgers	110
Tuna Poke Tostadas	125
Grilled Steak Sliders	135

## ON THE LIGHTER SIDE

Serves approx. 12 per order (add chicken +10)

Kale Salad with Orange and Feta	50
Southwest Salad	50
Chef's Choice Seasonal Salad	50

---

Serves approx. 24 per order

Charcuterie Board	125
-------------------	-----

## SIGNATURE PIZZAS • 12"

A la Carte; Gluten free +2

Choose from:

Cheese	12
Pepperoni	14
Sausage	14
Buffalo Chicken	14
Rotating Seasonal	14

## DESSERTS

12 pieces per order

Mini S'more Cups	72
Mini Carrot Cake Cups	72
Mini Tiramisu Cups	72
Mini Skillet Cookies	48
Assorted Cookie Tray	36

Ask about our seasonal dessert offerings!

# EVENT FOOD STATIONS

---

AVAILABLE FOR GROUPS OF 20 OR MORE; STATIONED AND REPLENISHED FOR 90 MINUTES

## **PIZZA STATION** 15/pp

Includes choice of three assorted 12" pizzas (cheese, pepperoni, sausage, roasted veggie, buffalo chicken) and choice of salad (mixed greens, southwest, or kale)

## **NACHO BAR** 12/pp

Includes: corn tortilla chips with nacho cheese; served with shredded lettuce, tomatoes, onions, black olives, jalapeños, sour cream, guacamole

++ UPGRADE TO A TOT-CHO BAR additional 2/pp

Includes all of the above + house tater tots

++ ADD PROTEIN TO ONE OF THE ABOVE additional 4/pp

Choice of diced buffalo chicken or brisket

## **TACO BAR** 20/pp

Includes brisket, chicken tinga & fajita veggies served with corn & flour tortillas, chihuahua cheese, lettuce, napa cabbage, pico de gallo, tomatoes, onions, black olives, jalapeños, sour cream, guacamole, spicy ranch & salsa

++ UPGRADED PROTEIN CHOICE additional 4/pp

shrimp or skirt steak

## **JUST THE CLASSICS** 20/pp

Includes selection of two: boneless wings, mini burgers, or bbq chicken (or fajita veggie) quesadillas. Served with a choice of salad (mixed greens, southwest, or kale) & fries or tater tots

## **CARVING STATION** 30/pp

Includes brisket & turkey; assorted sauces and fresh rolls with choice of 2 of the following sides (seasonal vegetables, salad, pasta salad or mac & cheese)

++ ADD PRIME RIB additional 15/pp

## **PRETZEL STATION** 10/pp

Jumbo pretzels served hot in our pretzel display with cheese and assorted dipping sauces

