



# HOOK X HALL

WHERE X MARKS THE SPOT

# WHAT MAKES US STAND OUT?

OVER 13,000 SQ FT OF GORGEOUS INDOOR AND OUTDOOR VENUE SPACE

Hook Hall is a versatile and boundless venue able to accommodate your every need through one-of-a-kind experiences. Hook Hall is here to celebrate important milestones in your life. Our main objective in everything we do, is to *Deliver the Unexpected.*

PROXIMITY TO CONVENTION CENTER

AMPLE POWER

EXISTING RIGGING POINTS

VALET READY

LOAD-IN GATES Can accommodate automobiles

NON-UNION

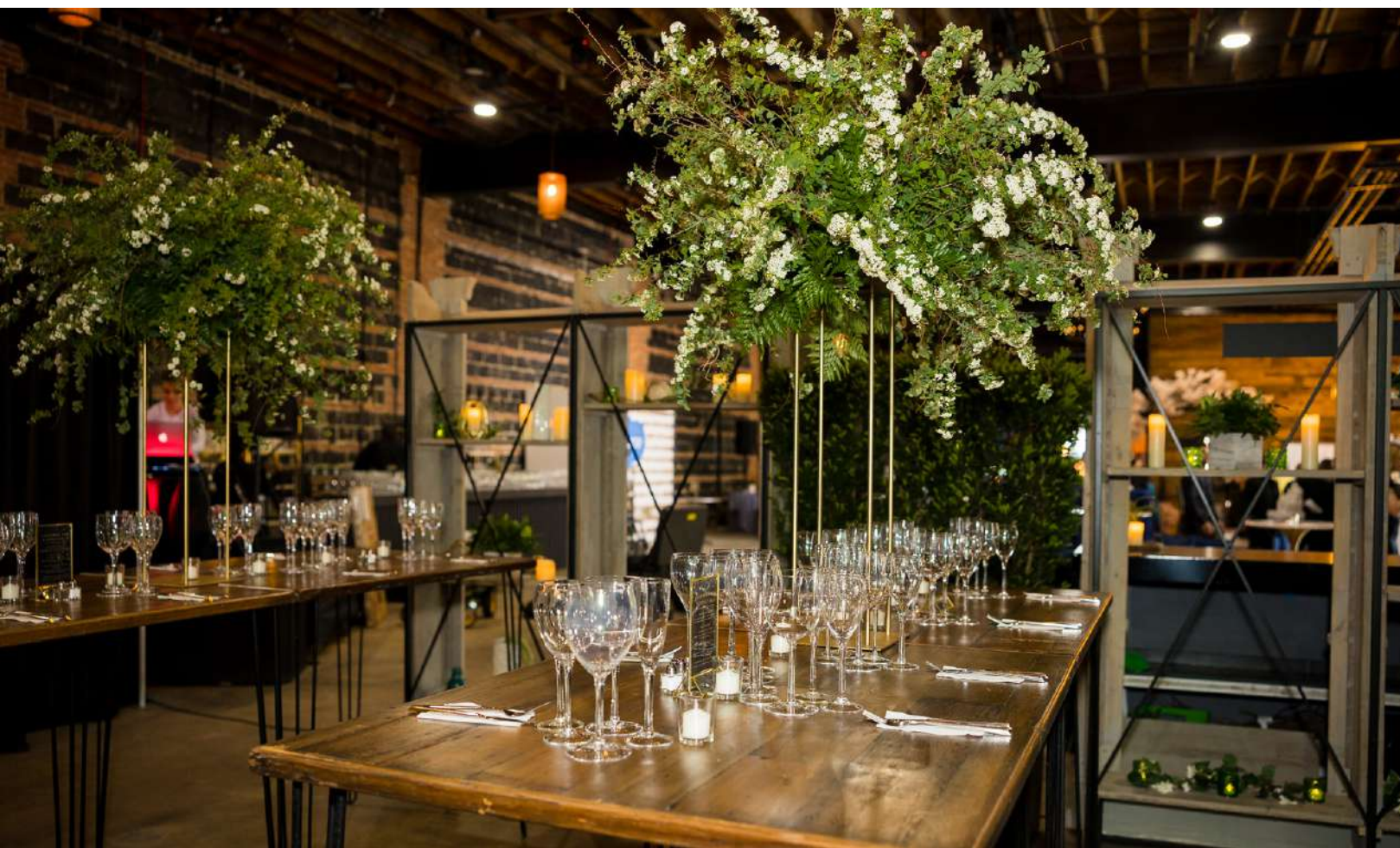
PROJECTOR & TVS IN-HOUSE

FULL VENUE BUYOUT OPTIONS

ALL-INCLUSIVE BEVERAGE PACKAGES

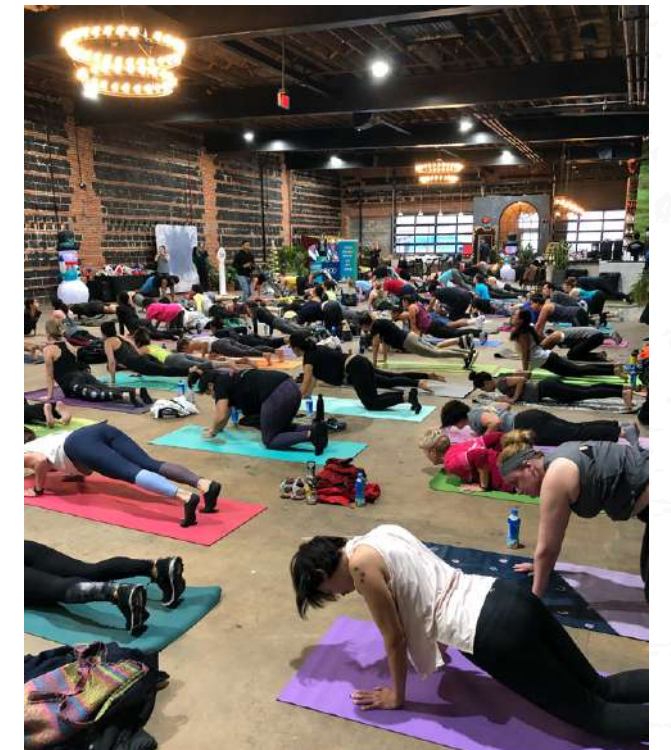
TOTAL CAPACITY: 1,375





## UTILIZE OUR SPACE FOR

- WEDDINGS
- REHEARSAL DINNERS
- CORPORATE EVENTS
- PARTIES
- PRODUCT LAUNCHES
- SOCIAL EVENTS
- COMMUNITY EVENTS



# SPACES TO RENT



**THE FULL SHIP - 1,375** CAPACITY  
 ENTIRE FRONT PATIO + INDOOR HALL + OUTDOOR DECK  
 875 Banquet Rounds  
 1225 Theatre/Auditorium  
 725 Classroom



**THE MAIL HALL - 700** CAPACITY  
 ENTIRE INDOOR SPACE  
 500 Banquet Rounds  
 675 Theatre/Auditorium  
 400 Classroom



**THE STERN - 400** CAPACITY  
 THE BACK HALF OF THE MAIN HALL  
 200 Banquet Rounds  
 375 Theatre/Auditorium  
 175 Classroom



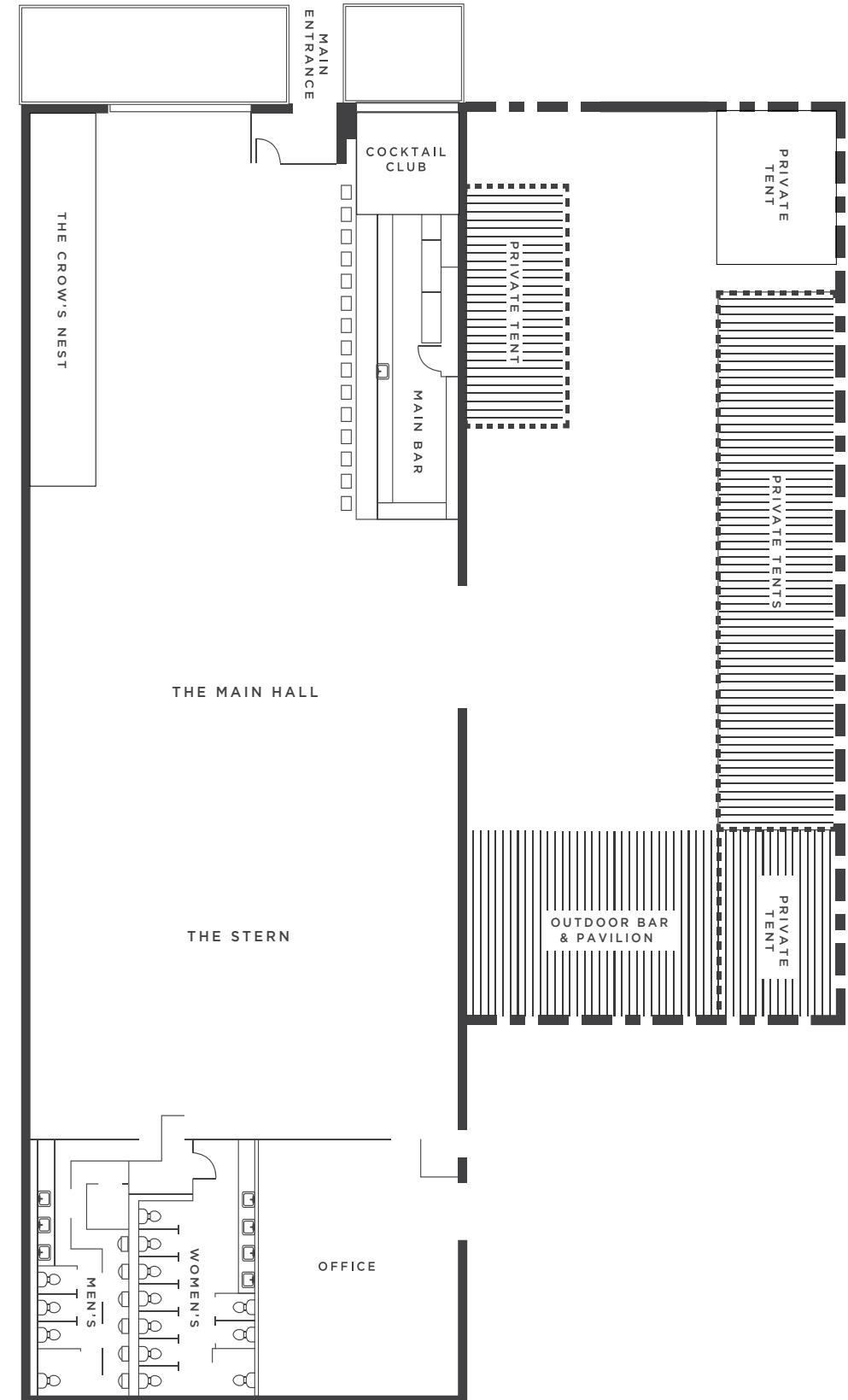
**THE DECK - 675** CAPACITY  
 ENTIRE OUTDOOR SPACE  
 375 Banquet Rounds  
 550 Theatre/Auditorium  
 325 Classroom

# SPACES FOR GROUPS OF 50 AND UNDER

**CROW'S NEST - 50** CAPACITY  
 INDOOR PRIVATE MEETING + PARTY SCENE  
 30 Banquet Rounds  
 40 Theatre/Auditorium  
 35 Classroom

**SEASONAL PRIVATE CABANA RENTALS - 6-50** CAPACITY

# LAYOUT OF THE SPACE







## ACCESSIBILITY

### HOOK HALL IS LOCATED IN THE PARK VIEW AND PETWORTH COMMUNITY

It is easily accessible via public transportation (three blocks from the Georgia Ave/Petworth Metro), on a major thoroughfare of Georgia Ave and all the major bus lines, and with street parking in the neighborhood. It's location just off of Rock Creek Parkway makes Hook Hall a convenient venue for events or meetings.



3 BLOCKS FROM GEORGIA AVE/PETWORTH METRO



ON A THROUGHFARE OF ALL MAJOR BUS LINES



STREET PARKING IN NEIGHBORHOOD

## AMENITIES

FOR EASY AND HASSLE-FREE EVENT PLANNING, HOOK HALL OFFERS THE FOLLOWING AMENITIES:

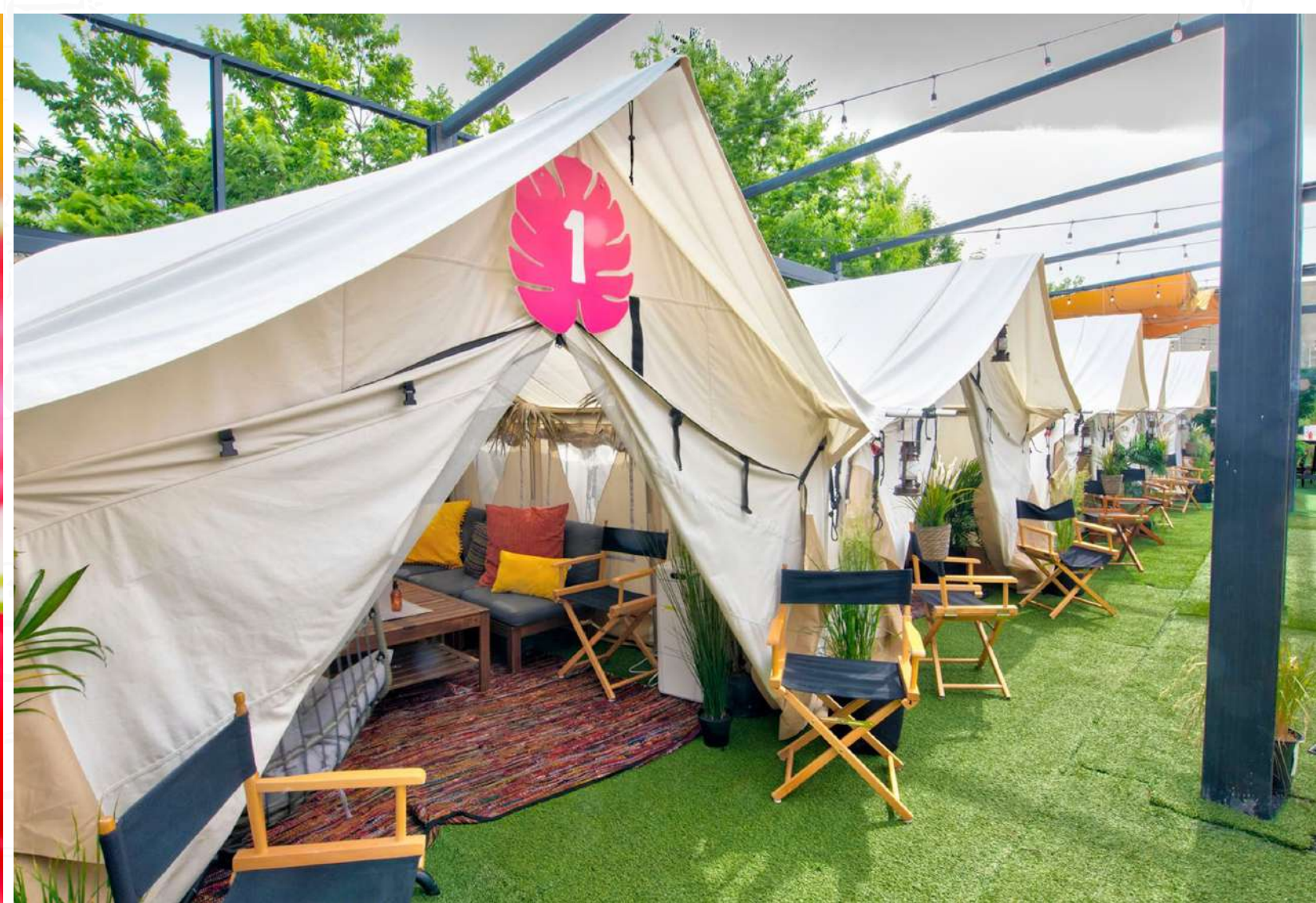
### FACILITY & PRODUCTION

- 1 Structural beams spanning the ceiling throughout for endless rigging points
- 2 Zero interior columns allowing for clear sight-lines throughout the entire venue
- 3 20'+ ceiling heights throughout venue  
Sectioned off space for caterers and vendor back of house with easy access to serve guests
- 4 Enjoy the outside on The Deck - a private event space that can be rented separately from the building with access to a 32 tap bar.
- 5 Bathroom facilities to accommodate 1K+ patrons
- 6 Off-street parking and valet services available
- 7 ADA compliant

### TECHNOLOGY

- 1 WiFi access
- 2 Built in audio/visual options including LED television screens and 15' projector
- 3 Bluetooth compatible LED televisions





# PREFERRED PARTNERS

Hook Hall has relationships with the following preferred partners. If you have any outside vendors you're interested in using, please speak with your event coordinator.

## CATERERS

Corcoran Caterers  
Melanie Davis  
melanie@corcorancaterers.com  
O: (301) 588-9200  
M: (202) 359-3721  
<http://corcorancaterers.com/>

★ Occasions Caterers  
Wyatt McKenzie  
wmckenzie@occasionscaterers.com  
O: (202) 454-7838  
M: (202) 321-5555  
<http://www.occasionscaterers.com/>

★ Signature Caterers  
<https://www.signaturecaterers.com>

Spilled Milk Catering  
Amit Gulati  
amit@spilledmilkcatering.com  
O: (202) 525-6455  
M: (301) 237-3148  
<http://www.spilledmilkcatering.com>

Susan Gage Caterers  
Chap Gage  
cgage@susangage.com  
O: (301) 839-6900 | M: (202) 297-5352  
<http://susangage.com>

Timber Pizza Company/Call Your Mother  
Chris Brady  
chris@timberpizza.com  
O: (571) 722-1257 | M: (716) 909-6737  
<http://timberpizza.com>  
<https://www.callyourmotherdeli.com>

Well Dunn Catering  
Cameron Doucette  
cdoucette@welldunn.com  
O: (202) 543-7878 | M: (202) 543-7878  
<http://www.welldunn.com>

★ Windows Catering  
Chris Dunn  
cdunn@catering.com  
O: (703) 752-9409 | M: (703) 928-8599  
<http://www.catering.com>

## EVENT PLANNER

Corsair Creative  
tracy@corsaircreative.com  
O: (571) 895-5795  
<http://corsaircreative.com>



## AUDIO/VISUAL

Atmosphere Lighting  
Alicia Bowes  
info@atmospherelighting.com  
O: (301) 585-2100 | M: (301) 585-2100  
<https://atmospherelighting.com/>

Nomad Events  
O: 703.354.2939  
<https://nomadevents.com/>

Pike Productions DC  
Kathleen Kelley  
kathleen@pikeproductionsdc.com  
O: (301) 813-9500 | M:  
(202)792-3713  
<https://pikeproductionsdc.com/>

Dan Goldman  
Dan Goldman  
party@dangoldmanevents.com  
M: (202) 215-3655  
<https://dangoldmanevents.com>

## DECOR + MORE

Design Foundry Events  
Anne Senatore  
asenatore@avistaevents.com  
M: (240) 462-3377  
<https://www.foundrycrew.com>

Revolution Event Design and Production  
Erin Cermak  
cermake@gmail.com  
M: (410) 539-7236  
<https://eventrevolution.com/>

## ENTERTAINMENT

Lucy Black DC  
hello@lucyblackent.com  
O: (202) 780-8360  
<https://lucyblackentertainment.com>

## VALET

Atlantic Valet  
Natnael Abraham  
nabraham@asgpark.com  
O: (202) 407-9555  
M: (202) 498-2152  
<http://asgpark.com>

MJ Valet  
Michael Jasser  
202 587-2745

## INSURANCE

Reese Yeatman Insurance  
Tom Riley  
triley@reeseyeatman.com  
(301) 657-9491

## RENTALS & TENTING

Select Event Group  
Carmen Trimboli  
ctrimboli@selecteventgroup.com  
M: (443) 904-8305  
<https://selecteventgroup.com>







# HOOK X HALL

[events@hookhall.com](mailto:events@hookhall.com)

202-629-4339

3400 GEORGIA AVENUE NORTHWEST,  
WASHINGTON, DC, 20010

 @HOOKHALL\_DC

 /HOOKHALL

[HOOKHALL.COM](http://HOOKHALL.COM)

5/10/23