



CARROLL HALL

EVENT GUIDE

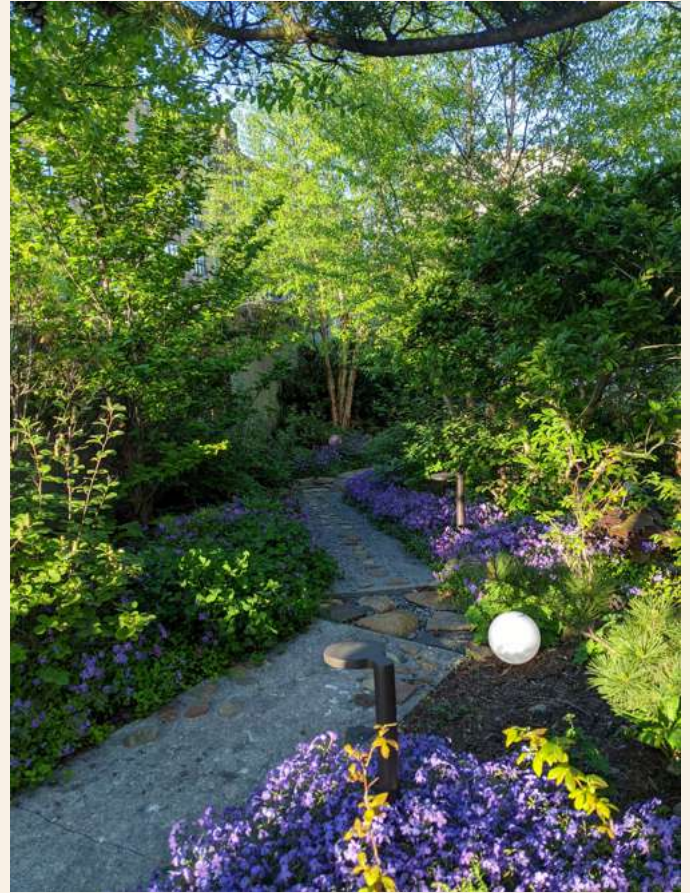
ABOUT



Carroll Hall is a rare and unexpected event space featuring a botanic garden in Brooklyn. Whether an eccentric insect or vignette through a wall opening, we revel in curiosity. Ultimately, the garden is the heart of Carroll Hall; the promise of a quiet moment outside is our grounding force.

We welcome you to visit us for a tour, to attend one of our ticketed events, or to discuss how we can customize our converted warehouse and botanic garden for private events, from weddings, baby showers, bridal showers, and birthday parties to art exhibits, performances, corporate functions, fundraisers and film shoots.

Please email us at hello@carrollhall.com.



GENERAL INFORMATION

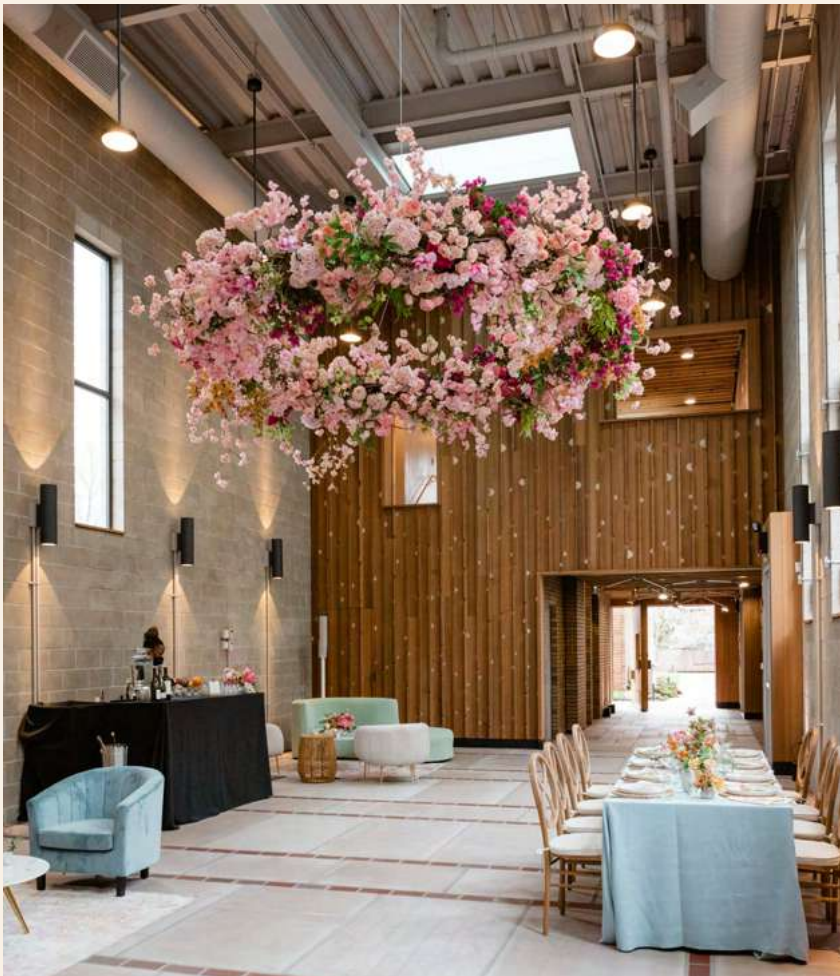
- Our converted warehouse and botanic garden can be customized to your event needs.
- Maximum total capacity for up to 109 seated, 130 cocktail/standing.
- Exclusive full liquor license with bar packages and staffing.
- Carroll Hall is ADA compliant. All public spaces inside and out are on the ground floor and are wheelchair accessible.
- (2) standard unisex bathrooms, (1) ADA accessible bathroom with a changing table
- (2) dedicated parking spots available. City permit required to cone off additional parking. Ample street parking available.
- Easily accessible via public transportation (Morgan Ave L train stop)

SPACES



Warehouse

- 1,088 sq ft
- Maximum capacity: 95 standing / 65 seated
- Street level with roll-up door
- 8'x8' pivot door with access to the garden
- 25' exposed beam ceilings with weight-bearing beams
- Natural light with (3) skylights, (5) 14' windows, (1) 10' window
- ADA accessible throughout warehouse
- Central AC/Heating
- (10) dimmable hanging lights, (9) dimmable sconces
- (6) power outlets on separate 20-amp breakers
- Drive-in accessible and ground-level loading dock



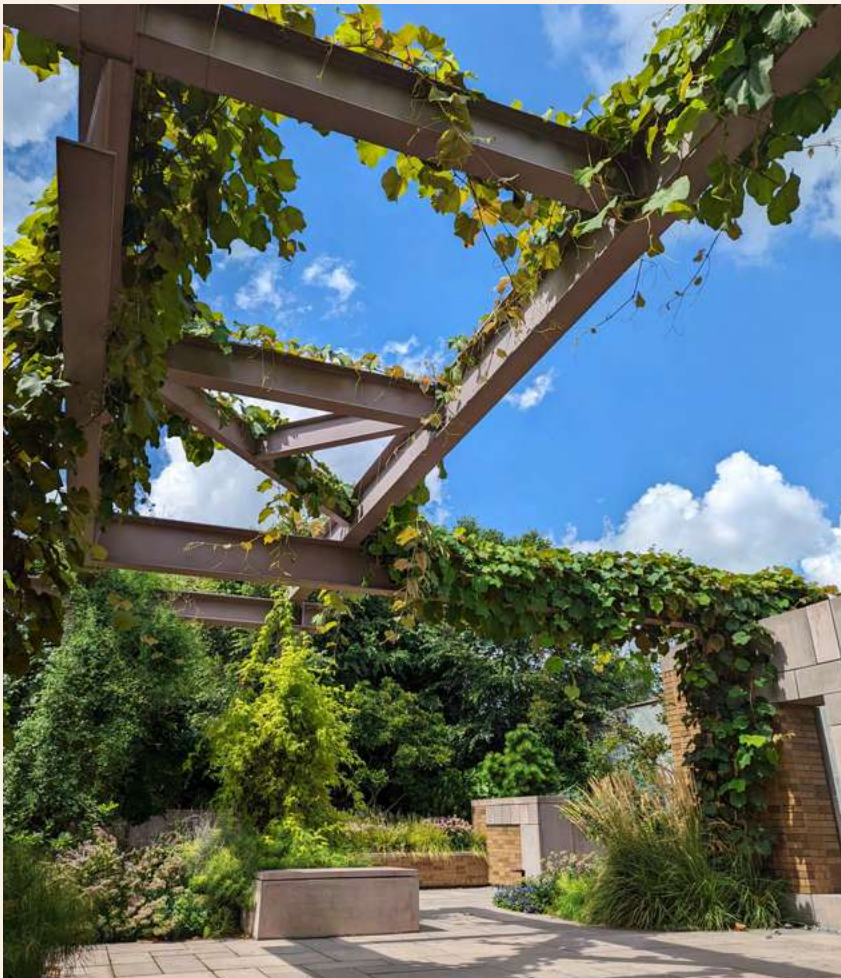
SPACES



Garden

- 1,606 sq ft
- Maximum capacity: 130 standing* / 100 seated
- Year-round garden with two connected courtyards
- Built-in benches
- Water features including fountain (seasonal)
- ADA accessible in lower garden
- Street level with access to street for load-in/out
- Tenting available through a third-party vendor
- Outdoor lighting and uplighting available
- (5) power outlets on separate 20-amp breakers

** Maximum capacity of the entire venue (warehouse + garden) is 130 people.*

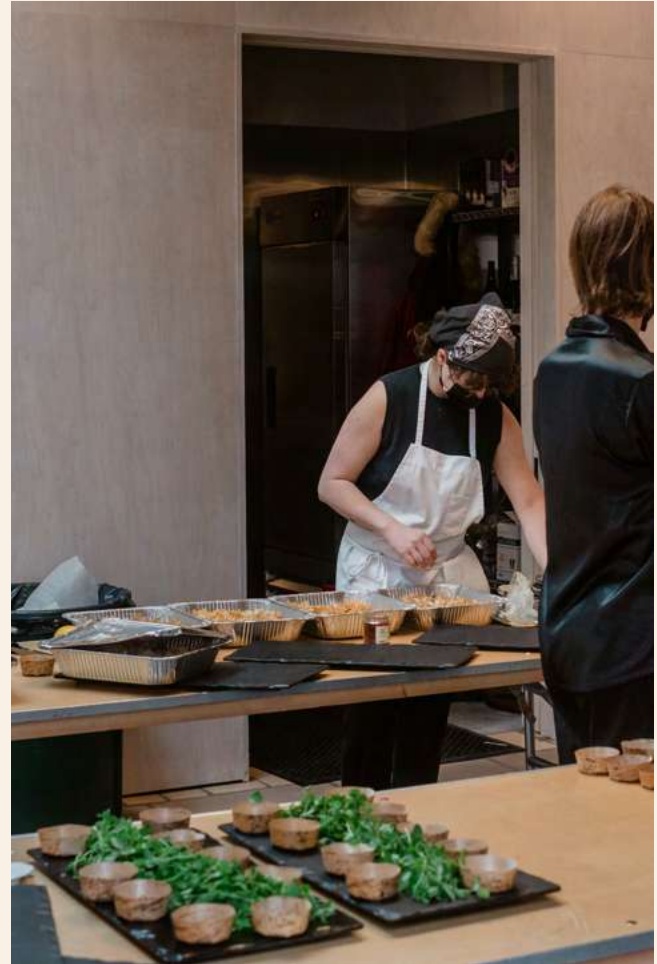


SPACES

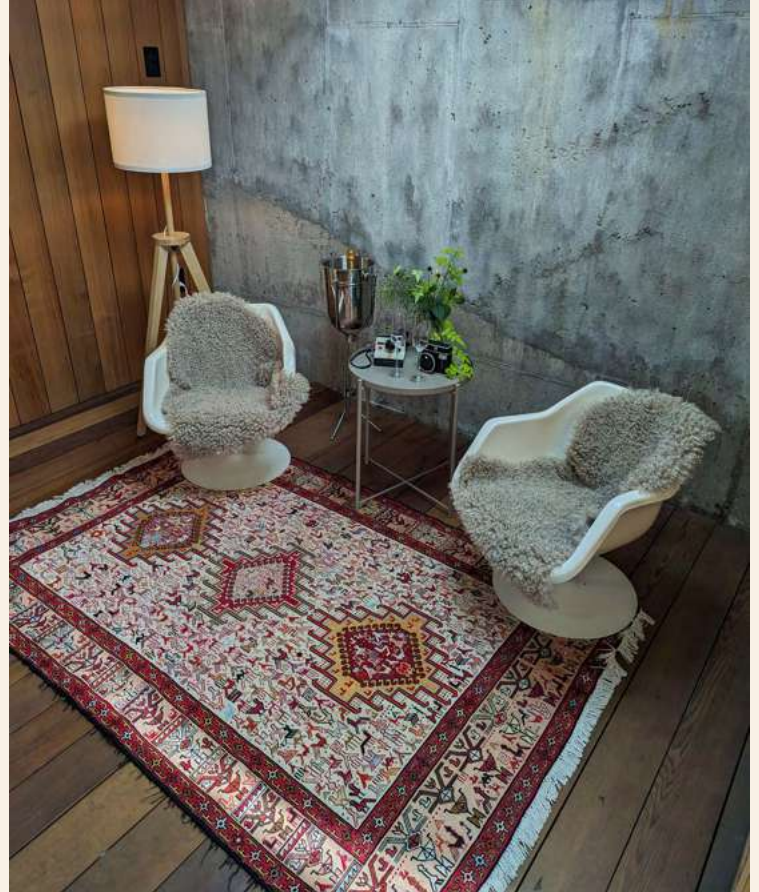


Rose's Room

- 384 sq ft
- Maximum capacity: 12-15 seated or standing
- Catering room that features commercial refrigerator, 3-compartment sink, ice machine, microwave, and cutting board area
- ADA accessible
- Full sliding wall that opens to garden
- Central AC/Heating
- (6) outlets on separate 20-amp breakers
- (2) 240-volt outlets on separate 60-amp breakers



PREMIUM SPACES



Mezzanine Lounge*

- Maximum capacity: 6 standing/seated
- Indoor private lounge overlooking the warehouse, plus outdoor balcony
- Sliding wall to close off mezzanine to the warehouse
- Furniture: couch, two chairs, full-length mirror
- This limited access space is not ADA accessible.

* The lounge is a pass-through area used by staff and some restricted access applies. Furniture in the mezzanine cannot be removed.

Treehouse

- 100 sq ft
- Maximum capacity: 4 standing/seated
- Discreet wooden lounge area
- Featuring accordion-style window overlooking garden and sliding wooden door for privacy
- (1) skylight
- This limited access space is not ADA accessible.

BEVERAGE PACKAGE



Standard Beverage Bar

Soft drinks (coke, diet coke, sprite, ginger ale, club soda), juice (orange, apple, cranberry, pineapple) and sparkling water.

3 hours — \$18 / person

4 hours — \$24 / person

5 hours — \$29 / person

Brunch Bar

Standard Beverage Bar PLUS Rosé, Mimosa, Bloody Mary, Screwdrivers, and Mock-tails

3 hours — \$32 per guest

4 hours — \$43 per guest

5 hours — \$49 per guest

Beer and Wine Bar

Standard Beverage Bar PLUS Norton Malbec, Brancott Sauvignon Blanc, and Beers (Abita Amber, Lagunitas IPA and Michelob Ultra, DownEast Cider).

A la Carte options are available for an additional charge.

4 hours — \$41 per guest

5 hours — \$47 per guest

Classic Bar

Beer & Wine Bar PLUS standard liquor selection & mock-tails (Tito's Vodka, Citadelle Gin, Old Forester Bourbon, Plantation 3 Star White Rum, Lunazul or Espolon Tequila, Aperol, Veuve du Vernay Sparkling Wine, DeKuyper Triple Sec, Noilly Prat Sweet and Dry Vermouth, Peychaud's Bitters.

4 hours — \$52 per guest

5 hours — \$59 per guest

Luxe Bar

Luxe Bar is an extended offering of wines and luxe liquor selections & mocktails. (Grey Goose Vodka, Hennessy, Neversink Gin, Angel's Envy Bourbon, Pinhook Rye, Jameson Irish Whiskey, Suntory Toki Japanese Whiskey, Old Pulteney Scotch Whiskey, Ron Zacapata 23 Dark Rum, Casamigos Tequila, LaMarca Prosecco, Treana Cabernet Sauvignon, Meiomi Pinot Noir, Stag's Leap Chardonnay, Apothic Rosé, Reagan's Orange Bitters,).

4 hours — \$71 per guest

4 hours — \$81 per guest

All beverage service to be exclusively provided by Carroll Hall. Beverage packages are subject to New York State tax. Cash bars are not permitted on premises, open bars only. Bar packages include beverages, ice, mixers, bar staff, and glassware in the rate.

BEVERAGE PACKAGE ADD-ONS



Mocktail List

Standard

Choice of 2

Virgin Paloma

Apple Mule

Nojito

Peach Basil Palmer

Sparkling Apple Cider Cinnamon Mocktail

Premium

Add any 2 for an additional \$10 per person

Hot Mock Toddy

Pomegranate Spritzer

Watermelon Mint Daiquiri

Carrot Patch

Salted Caramel Coffee Russian

Mocktail menu is seasonal.

All beverage service to be exclusively provided by Carroll Hall. Beverage packages are subject to New York State tax. Cash bars are not permitted on premises, open bars only. Bar packages include beverages, ice, mixers, bar staff, and glassware in the rate.

Prosecco and Champagne

Prosecco (LaMarca) — \$10 per glass/\$60 per bottle

Champagne (Veuve Clicquot) — \$40 per glass/
\$180 per bottle

Brooklyn Beers Upgrade

+\$12 per person/All 16oz. cans

Pilsner, IPA, Seasonal



PRICING



CARROLL HALL PRICING	Mon-Thurs	Fri & Sun	Saturday
Tier 1: May, June, September, October	\$6,950	\$10,100	\$11,200
Tier 2: April, July, August, November, December	\$6,150	\$8,400	\$9,500
Tier 3: January, February, March	\$5,150	\$5,900	\$6,900

Your Rental Package includes:

- Access to and use of the Warehouse, Garden, and Rose's Room for 12+ hour rental
- Onsite Events Manager and Security for the duration of your event
- Wifi throughout Warehouse
- Coat rack with hangers
- Basic furniture package:
 - (100) white padded folding chairs
 - (10) 60" round tables
 - (4) 6-ft rectangle catering tables
 - (14) 6-ft rectangle guest tables
 - (7) cocktail tables
 - (2) Indoor/outdoor mobile bars

Notes:

- Carroll Hall pricing is subject to type of event. Inquire about hourly pricing.
- Where Monday is a holiday, Saturday pricing and event timing applies to any Sunday preceding a holiday.
- The mezzanine lounge and treehouse are both premium spaces and are subject to an additional fee.
- A day-of coordinator or an event planner is required for your event.
- Furniture set up service is available upon request. Additional fees will apply.



CONNECT WITH US

2 VANDERVOORT PLACE, BROOKLYN, NY 11237

WWW.CARROLLHALL.COM | 347-201-1479



www.instagram.com/CarrollHallGarden/



www.facebook.com/carrollhallgarden



hello@carrollhall.com



CARROLL
HALL