

THE HIVE

THE CREATIVE HIVE EVENT SPACE

16819 111 AVE NW, EDMONTON, AB T5M 2S4





INDEX

ABOUT US | P. 3

FLOOR PLAN | P. 4

EVENT SPACE | P. 5

RENTALS | P. 10

EXCLUSIVE VENDORS | P. 11

PREFERRED VENDORS | P. 12

TESTIMONIALS | P. 15

CONTACT US | P. 16



ABOUT US

THE CREATIVE HIVE is simply our passion. Sounds corny, but hey it's the truth. We wanted to make a single place where all creative's are welcome to explore their craft, hone their skills and collaborate naturally with other people navigating changing industries.

First though...how? We have both been in the media world for more than a decade. A world that is changing faster than mainstream News can keep up to, but in the midst of it all we carved out a complete love for our community and the many people that jump in each day to make their dreams a reality. We wanted to be a part of that! We wanted to create a place that welcomes all the dreamers, doers, and people putting Edmonton on the map.

With small budgets and big plans we cleaned up and curated a special place unexpectedly found amongst all things industrial in West Edmonton. It's a space with a natural light studio, workspace, meeting space and event space.

It's a place that's as eclectic as the businesses that will fill our space. We want you to focus on what you do best and not worry about the overhead of a bricks and mortar building. You are free to create, plan, succeed...we just supply you loads of free coffee, kick-ass wifi and a space that naturally lends to collaboration.

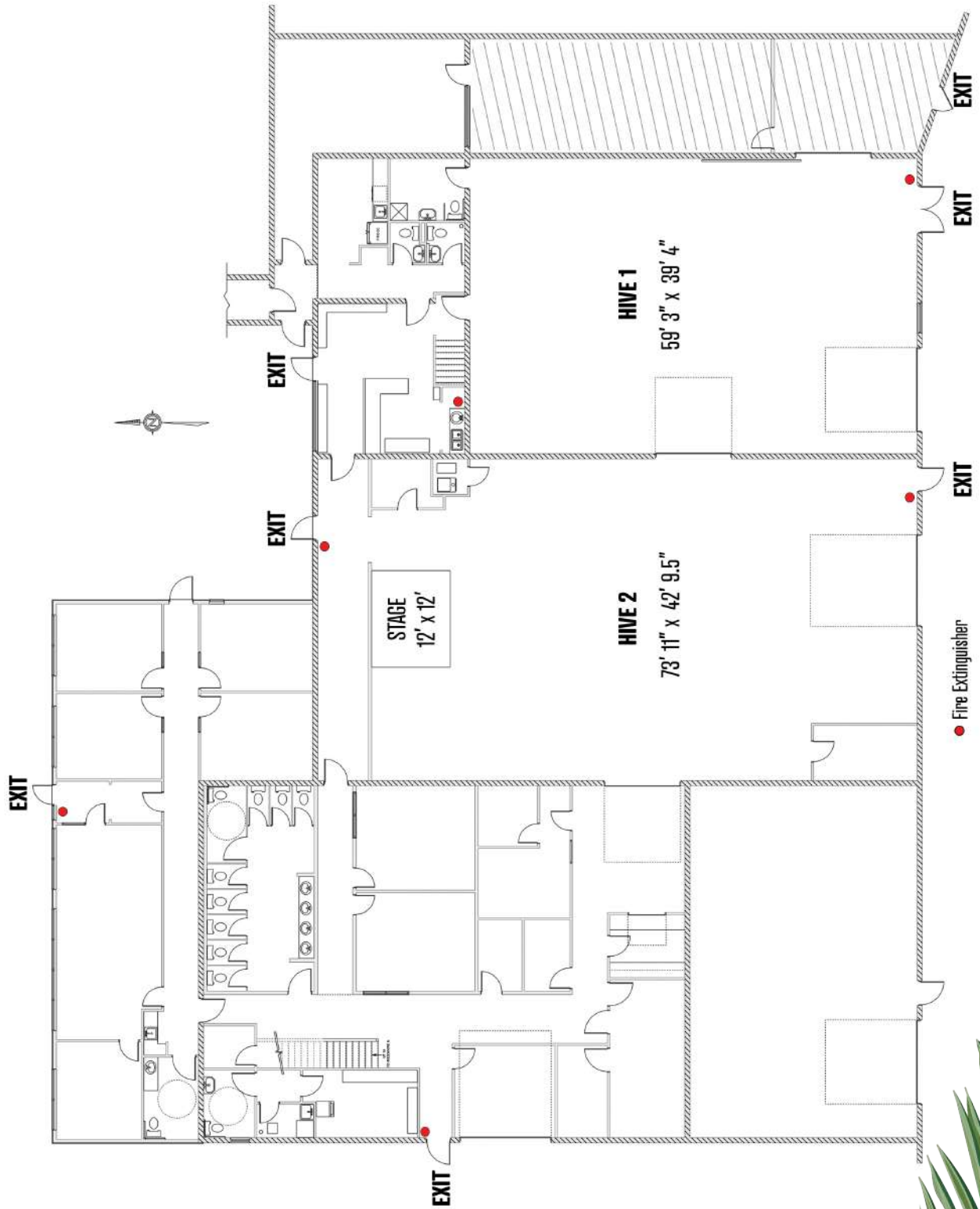
The main warehouse is an open concept space, an intimate event venue for meetings, conferences, seminars, office parties or retreats, birthdays', weddings and various other celebrations. It's still amazing to us to see others' imagination and creativity in bringing their visions to life. We love seeing what people do and the incredible vendors who walk through the door!

Our first jobs were in the News...using video to tell stories, events, and moments. We are now working to make The Creative Hive a place where stories are shared, moments made and community is created. The Hive is our events branch that is here to help you! Hive Media is our newest arm that uses those decades of experience to share video stories, messages, virtual events, and so much more.

The response to our dream has been overwhelming and we truly hope to continue growing something uniquely Edmonton.



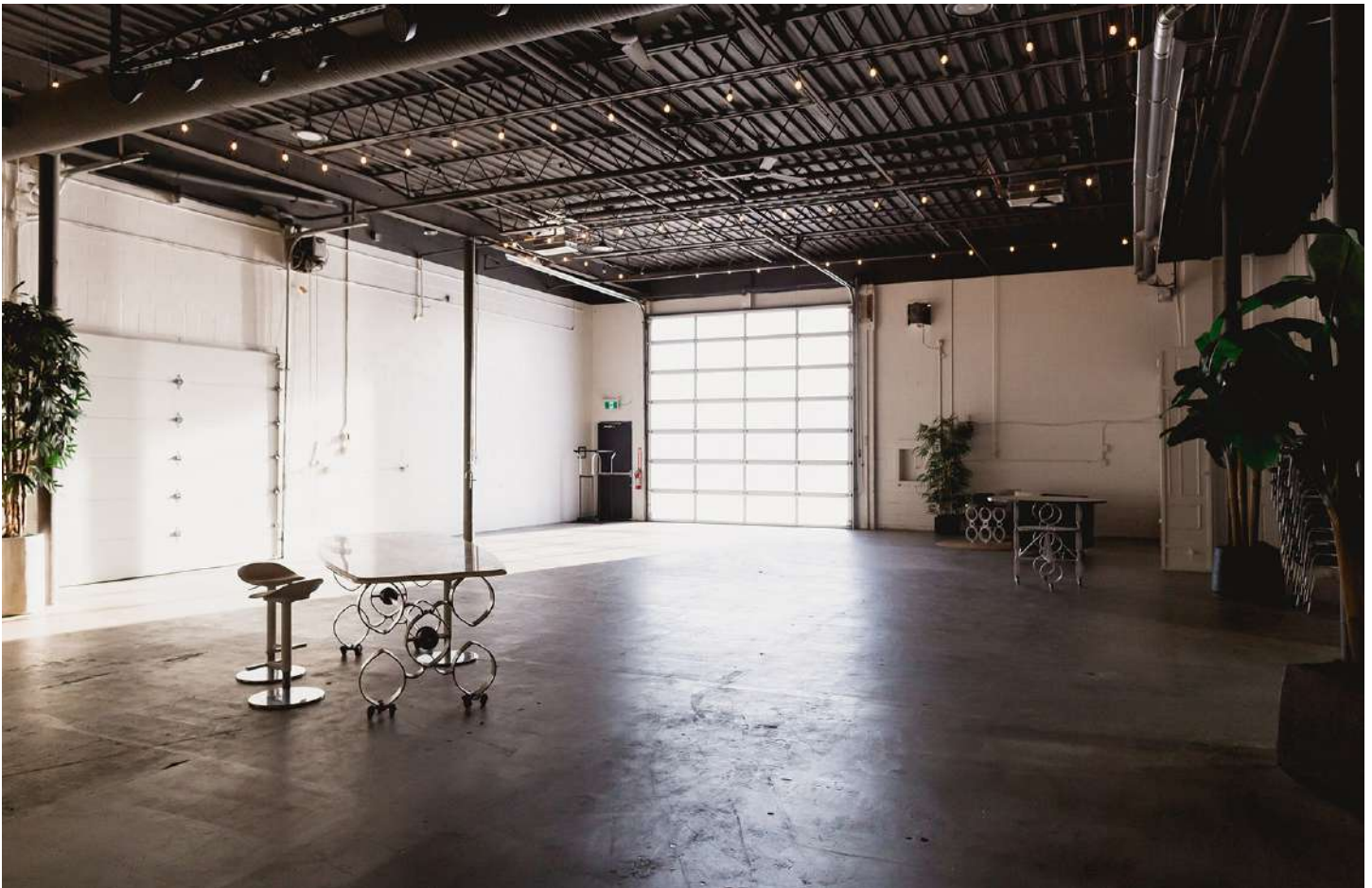
FLOOR PLAN





 **EVENT SPACES**





HIVE 1

2,200 SQ FT
EVENT SPACE

HIVE 2

3,100 SQ FT
EVENT SPACE

Our 5,300 sq ft event space boasts the industrial feel with vaulted exposed ceilings, brick accent walls, and cement flooring. All a crisp white to be fully customizable for any and all events, it's the perfect blank slate with so much character!

We have some amazing vendors for you to work with at the Hive, see page 15 for a list of our exclusive and preferred vendors. Any event with more than 50 people you have to have an event planner or organizer on site.



EVENT INSURANCE REQUIRED

Get Insurance Here: [DUJO](#) · Venue: The Creative Hive

CLEANING FEE REQUIRED

EVENT DAY COORDINATION OPTIONAL

Rental Includes:

- Food prep & storage area
- AV System | Wifi projector & screen (in Hive 2 space)
- PA system
- 2 Washrooms
- On-site parking | Ground level loading if needed
- Parking lot & street parking
- FOB system access
- Storage space (pending availability)
- Metal cart for pick-up service (1)
- Dollies (2)



HIVE 1 → 125 Person Capacity

HIVE 2 → 125 Person Capacity

**Combined use of both spaces has a max capacity of 250 people*



HIVE 1

\$200/HR
\$2,500/DAY
\$5,000/WKND

HIVE 2

\$300/HR
\$3,500/DAY
\$7,000/WKND

BOTH

\$450/HR
\$5,500/DAY
\$9,000/WKND

**Weekend is Friday 5PM - Sunday 12PM*





RENTALS



PHOTO STUDIOS

We want to make the The Creative Hive accessible for all photographers so we have carved out space in both Hive 1 and Hive 2 to be used **ONLY** for photo sessions. Access to all of the in-house furniture for props, kitchen space, outdoor patio. Perfect for photo sessions with multiple people.

- WIFI · Green Screens available for additional cost (\$25/day)
- Lights for shoots · Catering options available · Onsite parking included



Hive 1 or Hive 2 - \$125/HOUR · \$350/HALF DAY (4hrs) · \$650/FULL DAY (8hrs)

Hive 1 & Hive 2 - \$150/HOUR · \$500/HALF DAY (4hrs) · \$800/FULL DAY (8hrs)



BOARDROOM

Members have access to the meeting space as available. Outside small businesses looking to meet with clients can rent the space in 2-hour increments depending on availability.

- Whiteboard wall · Big screen for presentations · WIFI · Access to kitchen for coffee/tea · Catering options available · Onsite parking included



\$100/hr (min 2 hrs)
or \$350/day



10 Person Capacity



COURTYARD

Take wooing your clients to the next level with a private courtyard tucked in the centre of The Creative Hive. It's a space beautiful as it is to entertain up to 20 people.

- Access to kitchen · Catering options available
- Fast Wi-Fi · Onsite parking and more



\$150/hr or \$1,000/day



20 Person Capacity

EXCLUSIVE VENDORS

We have curated a collection of creative community vendors to help bring your event vision to life! These select local companies are exclusive partners with the hive.

Bee Together.

EVENTS • DESIGN • RENTALS

It's hard finding the right pieces to bring your space alive, but Bee Together has collected incredible classic pieces to help your guests feel right at home and their stuff is right here at The Hive! Whatever they don't have, the team will find one for you. It's one-stop shopping.



Full list of furniture selections and prices [here](#).



<http://www.beetogether.ca>



To make your experience at The Hive the best it can be we have partnered with Socials because this is a team of dedicated professionals who work hard to make your event the best it can be! Service is important and this team takes their role seriously. Click through to their website to learn more and reach out to The Hive for our exclusive menu options!



www.socialsevents.com



Square 1 Coffee was designed to bring you joy. From specialty coffee to craft beer, our home is your home. Our craft coffee comes from a deep desire to get the best out of every step of the process and our amazing baristas bring to life an experience we love to share. All of our treats are baked fresh daily and our food is prepared in-house- for you to enjoy fresh eats and delicious brew.



<https://www.square1coffee.ca>



PREFERRED VENDORS

The Hive is happy to have these amazing local companies as part of our preferred vendors:



If you can dream up the menu this talented crew can make it. From breakfast meetings to lunch, to full service event catering and even a portable BBQ...they're taking local catering cuisine to the next level.

 www.nakscatering.com



knotwood
Event Rentals

This dynamic local company works hard to offer unique choices for events with service that is unmatched. If you can dream up the idea...Miranda can make it happen.

 www.knotwoodeventrentals.com



Rowena and her team at PLANit Sound have a reputation for incredible events throughout Edmonton and the country. You will be guided through every step with an expert who is easily reachable.

 www.planitsound.com



Luminarie Creative provides photography + creative direction for people and brands. Led by photographer Dallas Curow, Luminarie offers a seamless creative experience + beautiful images to help you shine in both life and business.

 www.luminarie.ca



TESTIMONIALS

"Thank you so much for everything that you and your team did for our event this past Saturday! We appreciate your help, support and willingness to answer our 32349023 questions. We honestly could not have done it without you and your beautiful space. Our guests absolutely LOVED it and could not stop raving about how great it was. PlanIt Sound was also such an incredible help on the day of and had so much patience for us and my sprained ankle. We had an absolute blast and are so grateful to have been able to have it at The Creative Hive!"

- Mimi

"The Creative Hive is a passionate, professional company and very strategic when it comes to video, events, and production. They have greatly impacted our business and have brought us to the next level with respect to producing events. The team at The Hive feels like family and have always made us feel very comfortable with every project that we have created with them!"

- Dale Rosehill, Head of Events & Experiences | Dr. Jody Carrington Consulting Inc.

"I have had the honour to have been a part of the early beginnings of The Creative Hive and still remember it being just an open space with four walls. Since this time, it has been my pleasure to work alongside the minds behind The Creative Hive, to produce events in their space, and to be part of the thriving artistic community they have built in our city. When you host an event at The Hive, you will have the peace of mind and creative liberty knowing you are working with a venue who values excellence."

- Rowena Cui, COO | PLANit Sound

CONTACT US



16819 111 Ave NW, Edmonton, AB T5M 2S4



www.thecreativehive.ca



info@thecreativehive.ca



780.996.7510

