

A bride and groom are embracing on a brick path in a lush garden. The bride is wearing a white strapless wedding dress and holding a large bouquet of colorful flowers. The groom is wearing a dark blue suit. In the background, there is a stone building with arches and large terracotta pots. The scene is bathed in soft, natural light.

The Camp Lucy
EXPERIENCE

CAMP ♡ LUCY



*“True Love Bears All, Endures All, And Triumphs!”
Dada Vaswani*

WELCOME

To Camp Lucy

Home to several one-of-a-kind wedding venues and a collection of support services that will make your wedding as memorable as it is easy to plan, Camp Lucy is the premier destination for celebrations of love in the Texas Hill Country. This breathtaking 282 acre resort property, nestled within the rolling hills of Dripping Springs, was originally established as a wedding venue and has garnered national acclaim thanks to our impeccably maintained venues, luxury accommodations and beautiful location.

Our overnight guests will also have access to onsite activities, resort pool and fine dining restaurant, Tillie's. With stunning venues, luxurious amenities and exemplary customer service, Camp Lucy has everything you need to make your wedding truly special for you and your guests.

This is the place you want to use. We just had our second daughter get married at Camp Lucy and again, a perfect experience. Both times we had Katlin as our account manager and there is no way you could have someone better to work with. Our daughters both used the Sacred Oaks venue and you would be hard pressed to find something more beautiful. The giant oaks creating an umbrella over the entire tiered ceremony venue create the perfect place for an outdoor wedding in Texas - elegant and just enough shade for your guests along with perfect pictures. We used the Sperry Tent on the lawn for an elegant cocktail hour that all of our guests loved. Then inside for an elegant sit down dinner and dancing until midnight. One guest said, "That is the nicest event I have ever been to in my life" and many more said, "We had THE best time, what a beautiful venue and a perfect evening". From the first moment you talk to the team at Camp Lucy you will be pleased, they are beyond professional and will listen to what YOU want. Kaitlin never missed a beat in creating the event my daughters and wife had in mind. You will also appreciate that not only will the event come off without a hitch, but also her advice in making it right, all while paying attention to the cost. On the day of the wedding the Camp Lucy staff moved seamlessly in the background to make sure everything was perfect and on schedule. Kaitlin and the staff are off the chart amazing, they really know how to make your dream come true so you can all enjoy the day and have it be stress free.

Marcus W. | 1/08/2024

CAMP  LUCY



Included In Your Camp Lucy

EXPERIENCE

Thank you for selecting Camp Lucy as the venue for your upcoming celebration. We are delighted that you have chosen us, and as the team behind Whim Hospitality, we are honored to be a part of your special day. Our mission is to curate an extraordinary Camp Lucy Experience for you and your guests, guided by our commitment to excellence.

Throughout your journey with us, you can expect to work closely with a dedicated and compassionate account manager who will make the planning process seamless and organized. They will be your trusted point of contact, ensuring that all your queries are answered promptly and that every detail is taken care of with utmost care. If you have any lingering questions or would like further assistance, please do not hesitate to reach out to your assigned account manager. They are here to address any concerns and provide you with the information you need.

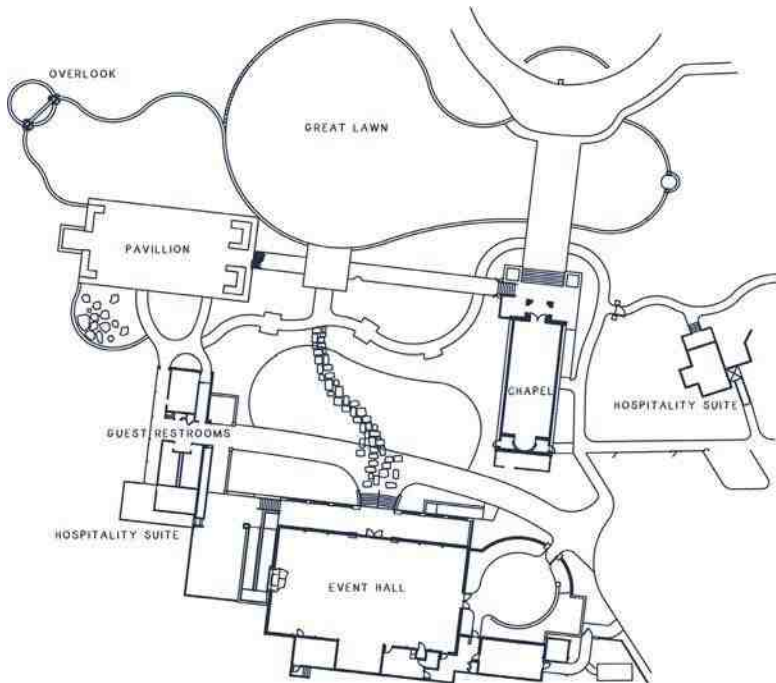
- Camp Lucy's expert Account Manager to curate your menus and on-site experience
- 2-hour engagement or bridal photography session (at Camp Lucy with your chosen photographer)
- Hospitality Suites on the day of your event
- 10-hour time block at your venue
- Signature dining tables, chairs for reception, and outdoor ceremony chairs
- Additional tables included: (6) cocktail tables, (2) 48" round tables, (5) 8' tables + (5) 6' tables
- Sit back and relax while we set-up and tear down your event
- Security Officer
- Signature linens in choice of: Ivory, Beige or Navy
- Signature dinner napkins in choice of: Ivory, Beige or Navy
- White French Knot dinner, salad and dessert plates
- Silver Flatware
- Crystal Glassware

IAN'S CHAPEL

Immerse Yourself in the Timeless Beauty.

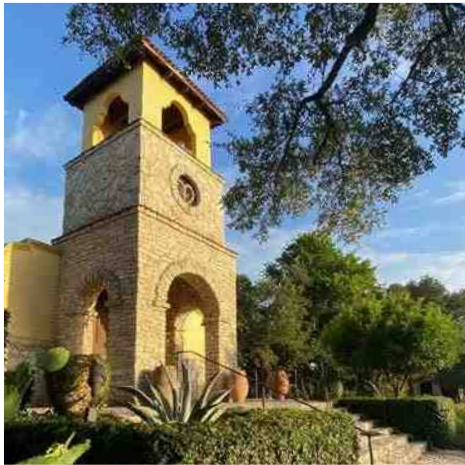
Ian's Chapel features a restored 19th-century French colonial chapel and antique bell from Vietnam, a majestic Events Hall created from a repurposed 1800's Amish barn originally built from hand-hewn white oak timbers in Ohio, and a dramatic, open-air Pavilion made from the ironwood timbers of a 1930's French Colonial church and a Ludowici tile roof repurposed from the Bexar County courthouse in downtown San Antonio. The Great Lawn and the Stone Arch provide breathtaking outdoor ceremony site options. The old-world-style brick-paved courtyard, lavish Great Lawn, and Chef-inspired catering kitchen make this venue the hallmark of Camp Lucy. Complementary on-site event spaces include two hospitality suites for each wedding party.

Experience the wonder of Ian's Chapel at Camp Lucy, where timeless elegance and modern conveniences unite to create an unforgettable celebration of love. *Capacity: 300 *capacities may vary based on room set-up*



IAN'S CHAPEL FACILITIES

*Chapel
Pavilion
Brick Paved Patio
Stone Arch Overlook
Great Lawn
Events Hall
Two Hospitality Suites
Private Deck
Ample Parking
Bell Tower*

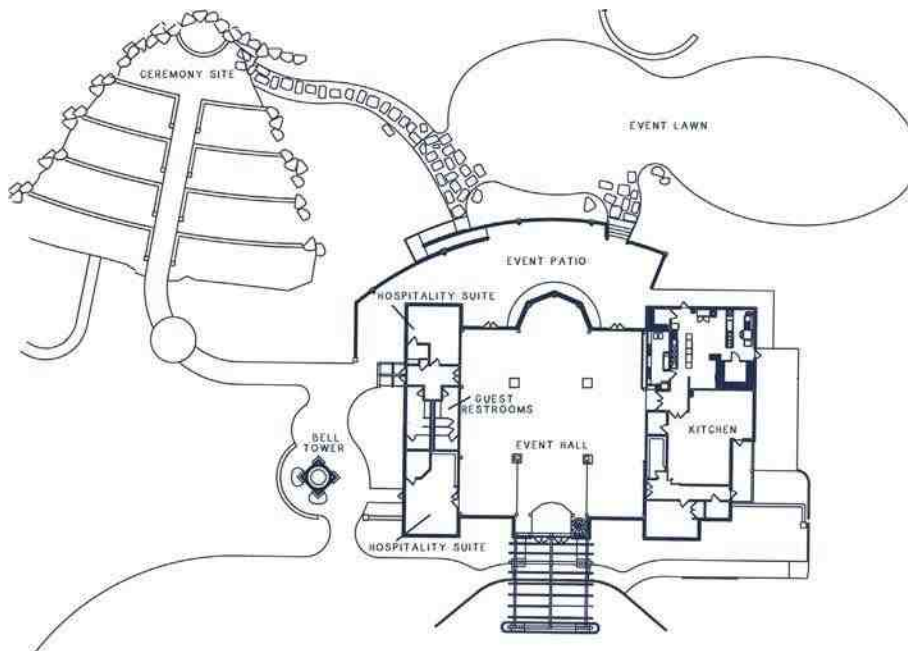


SACRED OAKS

Step Into The Enchantment and Celebration.

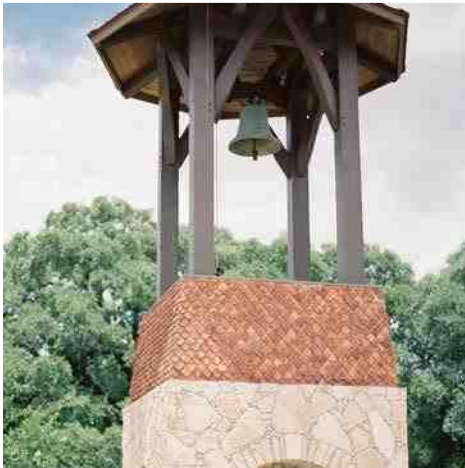
Nestled within a picturesque grove of ancient oak trees and adorned with twinkling lights, Sacred Oaks offers a stunning outdoor ceremony space that will leave you breathless. Prepare to be captivated by the sheer beauty of one of the most enchanting wedding settings you could ever imagine.

The allure of Sacred Oaks extends beyond its mesmerizing natural surroundings. Enter the impressive timber-framed formal reception hall, an architectural marvel that can comfortably accommodate your guests. The grandeur of this space will leave a lasting impression on both you and your loved ones, ensuring an unforgettable celebration. *Capacity: 350 *capacities may vary based on room set-up*



SACRED OAKS FACILITIES

*Event Hall
Live Oak Ceremony
Ampitheatre
Great Lawn
Bell Tower
Two Hospitality Suites
Ample Parking
Event Patio*

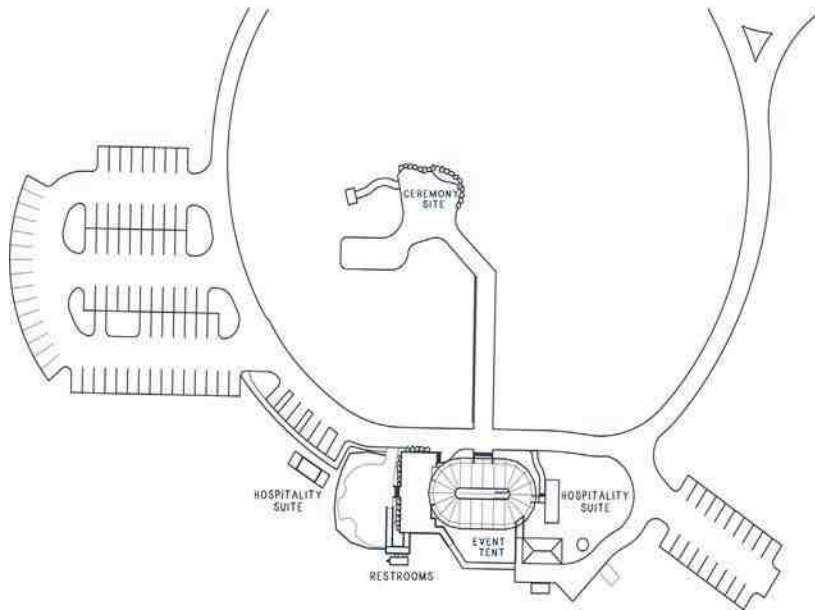


THE VINEYARD

Savor the Romance of the Texas Wine Country.

Camp Lucy's newest vineyard venue perfectly combines the rustic charm of the Texas Wine Country with the luxury and professionalism of the Camp Lucy experience. Immerse yourself in the captivating ambiance of the permanent 88-foot Savannah Sperry Tent, where you and your loved ones will be surrounded by the beauty of nature and the magic of celebration. Walk down the bistro-lit aisle, blanketed in a soft, intimate glow, and exchange your vows under a canopy of trees that provide both shade and a sense of tranquility. The experience is elevated even further with the inclusion of two private hospitality suites, allowing you and your wedding party to prepare and relax in style.

Escape into the idyllic world of a vineyard wedding at Camp Lucy and let your love story unfold amidst the beauty of nature and the warmth of heartfelt celebration. *Capacity: 150+ *capacities may vary based on room set-up*



THE VINEYARD FACILITIES

*Savannah Sperry Tent
Ceremony Site
Restrooms
Two Hospitality Suites
Deck
Ample Parking*





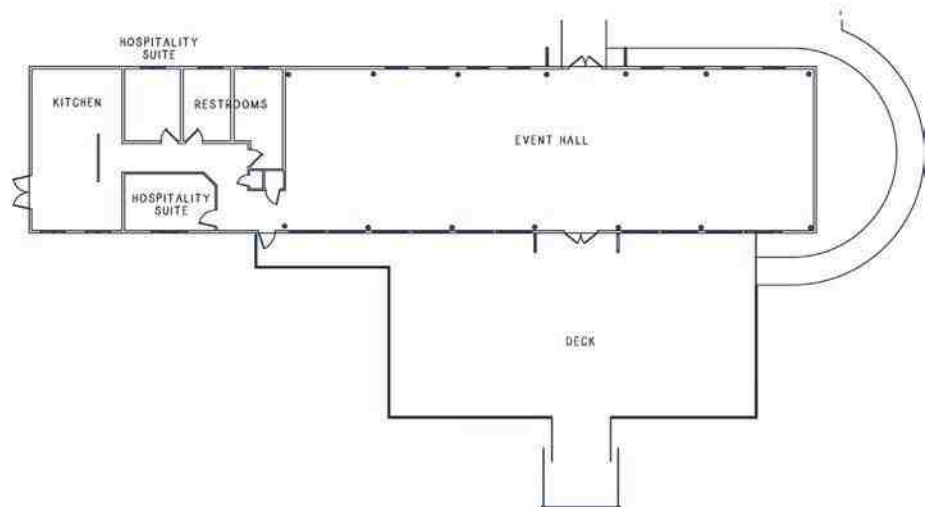
WHIT'S INN

Discover the Intimate Rustic Elegance.

Whit's Inn, combines a relaxed yet chic design aesthetic with world-class cuisine and service. The venue is a brilliantly re-purposed barn nestled near flowing Onion Creek, surrounded by lush, mature trees dripping with lights. Inside, barn wood walls, picture windows, Old World brick paver floor, and a memorable dancehall-style bar set the stage for your unforgettable event. An outdoor patio, canopied by lush oak trees, overlook the banks of Onion Creek provide additional space to take advantage of the gorgeous views of the property's rolling hills.

WHIT'S INN FACILITIES

*Main Event Hall
Onion Creek Access
Two Hospitality Suites
Private Patio/ Deck*





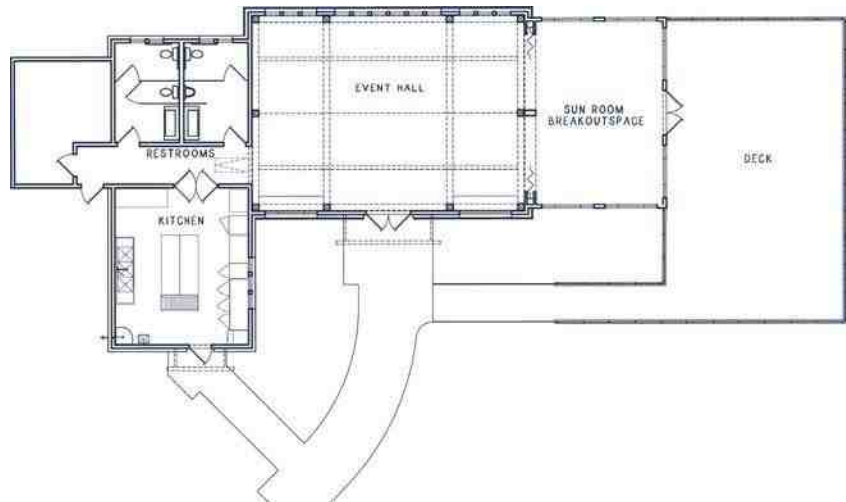
STEDMAN HALL

A Multi-function Event Space - The Perfect Location To Gather.

Conveniently located just a short stroll away from all guest rooms, Stedman Hall is the ultimate gathering place for your special events. Designed for small meetings, this space is complete with break-out spaces, premier AV equipment and private patio space. Whether you're looking to host a rehearsal dinner, a farewell brunch, or simply need additional hospitality space, this versatile and elegantly designed venue has you covered.

STEDMAN HALL FACILITIES

*Main Event Hall
Built in - AV System
Lounge Furniture
Breakout Meeting Spaces
Private Patio/ Deck*





Included In Your Camp Lucy

FOOD & BEVERAGE

Camp Lucy's Food & Beverage program mixes the refined taste of an A-List event with the warmth and creativity of the Texas Hill Country. We pride ourselves on exceptional presentation, world-class service and a unique dining experience no matter the size of your event. Under the leadership of Executive Chef, Meredith Shaffer, our team is prepared to help you curate the most delicious and memorable day for you and your guests.

I have nothing but amazing things to say about Camp Lucy: We were looking for a unique wedding venue for all our friends and family to gather at. The second we toured Ian's Chapel, we fell in love with the beauty and knew it was the place. We wanted a stunning outdoor ceremony, and the steps at Ian's chapel, provided the PERFECT backdrop, followed by a STUNNING outdoor cocktail hour under the pavilion and arch. We had the most amazing sunset and guests could not stop taking photos under the arch. We also wanted the reception indoor somewhere different than your typical ballroom. We also hosted our Friday night festivities of rehearsal dinner and welcome drinks at Stedman hall on property. The whole weekend was a complete dream and all the staff are so incredibly kind and professional. Laura, our camp lucy account manager was nothing short of amazing! She is so professional and detailed oriented and helped me bring my vision of an after party together once our reception ended. All our guests who stayed on property could not stop talking about how gorgeous all their rooms were. Camp Lucy is a total gem and I am still over the moon we found this perfect wedding venue.

Christina C. | 12/04/2023

BUFFET MENU

\$85 per guest
Includes your choice of:
2 Entrees
2 Signature Sides
2 Salads
Artisan Bread and Butter
Water, Ice, Iced Tea, Coffee

FAMILY-STYLE MENU

\$95 per guest
Includes your choice of:
2 Entrees
2 Signature Sides
2 Salads
Artisan Bread and Butter
Water, Ice, Iced Tea, Coffee

PLATED MENU

\$105 per guest
Includes your choice of:
1 Entree with sides
1 Salad
Artisan Bread and Butter
Water, Ice, Iced Tea, Coffee

BEER + WINE PACKAGE

.\$35 per guest

SIGNATURE BAR PACKAGE

.\$50 per guest

PREMIUM BAR PACKAGE

.\$60 per guest

HOTEL

Luxurious Overnight Accommodations

Camp Lucy offers a truly unique Texas experience whether you're here to relax or take full advantage of what the Texas Hill Country has to offer. Camp Lucy offers several luxurious overnight lodging options for your family or group. Whether you need a single hotel room, a spacious luxury suite, or a standalone family cottage, Camp Lucy provides a relaxing setting for the perfect Central Texas getaway experience.

CREEKSIDE COTTAGE

Accommodates up to 10 guests

- Full kitchen & dining area
- Guest room-2 XL twin beds
- Master room-2 queen beds
- Corner room-1 queen bed
- Queen sleeper sofa

LUCY'S COTTAGE

Accommodates up to 10 guests

- Full kitchen & dining area
- Guest room-1 king bed
- Master room-1 king & 1 full bed
- Corner room-2 XL twin beds
- Queen sleeper sofa

ESTATE DOUBLE QUEENS (7)

Accommodates up to 4 guests

- Kitchenette
- Hand carved stone tubs

*Two ADA-Compliant rooms accommodate up to 6 guests with sofa bed

VISTA DOUBLE QUEENS (4)

Accommodates up to 6 guests

- Kitchenette
- Ravine-overlook balcony
- Step-down living area + sofa bed

TREETOP DOUBLE QUEENS (2)

Accommodates up to 4 guests

- Kitchenette
- Private balcony

ESTATE DOUBLE KINGS (7)

Accommodates up to 2 guests

- Kitchenette
- Hand carved stone tubs

VISTA KINGS (8)

Accommodates up to 4 guests

- Kitchenette
- Ravine-overlook balcony
- Step-down living area + sofa bed

TREETOP KINGS (8)

Accommodates up to 2 guests

- Kitchenette
- Private balcony

JUNIOR ESTATE SUITE

Accommodates up to 4 guests

- Kitchenette
- Private living area
- King size bed
- Queen sleeper bed

TERRACE SUITE

Accommodates up to 2 guests

- Kitchenette
- Two private patios
- Luxury stone tub
- Private living area + fireplace

ENGLISH SUITE

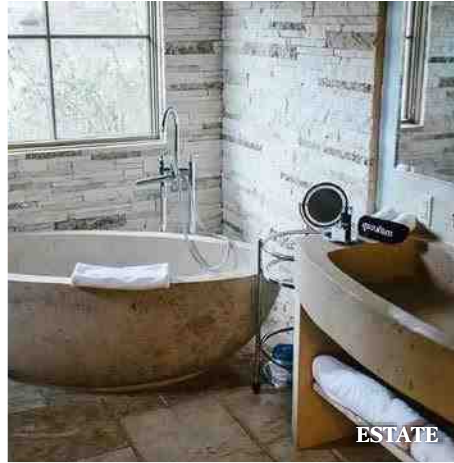
Accommodates up to 2 guests

- Kitchenette
- Private patios
- Luxury stone tub
- Private living area + fireplace
- Outdoor rain shower

*ADA-Compliant Suite



VISTA



ESTATE



JR. ESTATE SUITE



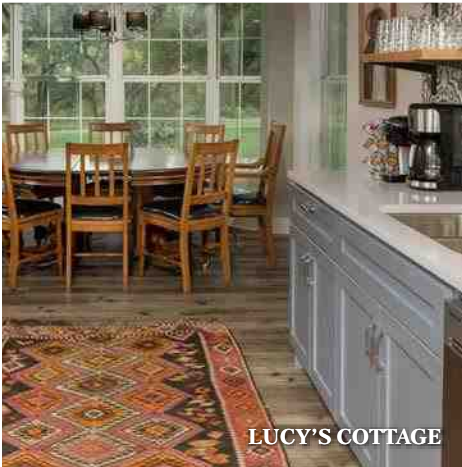
TERRACE



ESTATE



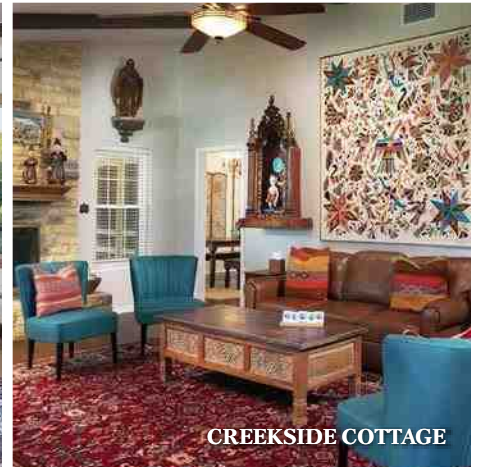
ENGLISH SUITE



LUCY'S COTTAGE



TREETOP



CREEKSIDE COTTAGE



The Extraordinary EXPERIENCE

TILLIE'S

Not only does Camp Lucy boast breathtaking wedding venues, but it is also the proud home of Tillie's, our elevated restaurant that transcends American Nouveau and Texas cuisine to new heights. At Tillie's, our menu reinvents familiar dishes with an imaginative twist that incorporates innovative international flavors, setting a new standard of culinary excellence in Central Texas. For those seeking a more intimate dining experience, Tillie's offers private dining spaces designed to accommodate parties of 8-20 guests.

"The atmosphere, food, and service was spectacular! The restaurant is beautiful and has a unique history. Our server took such good care of us. Celebrating our half anniversary, our server brought us champagne and sweet treats. We couldn't have asked for a better dining experience right before my fiancé proposed!"

Kaitlyn P. | Miami, FL



ACTIVITIES At Camp Lucy, there is never a dull moment. With an array of engaging activities and guest programs, there is always something exciting happening for guests of all ages and interests. From peaceful yoga sessions to exhilarating archery, we offer a diverse range of on-property entertainment options that will create an extraordinary experience for you and your guests.

RESORT POOL It's no mirage! The resort pool at Camp Lucy offers one of the most luxurious ways to enjoy the Texas Wine Country with swim-up bar and food options from the property's fine dining restaurant, Tillie's. Swim, sunbathe or sip your cares away at the Camp Lucy resort pool.

THE VINEYARD Enjoy the best of the Texas Wine Country at our 4 -acre working vineyard. Since our first harvest in 2014 we have expanded to growing enough grapes (which we hand-pick every summer) to produce 4 varieties of Camp Lucy wine. Stroll through the vineyard and/or sip on a glass of our very own vino!

*“Love is the music
that keeps us dancing through life.”*

