



A-FRAME CUB

1008 Winter Park Dr. Winter Park, CO 80482

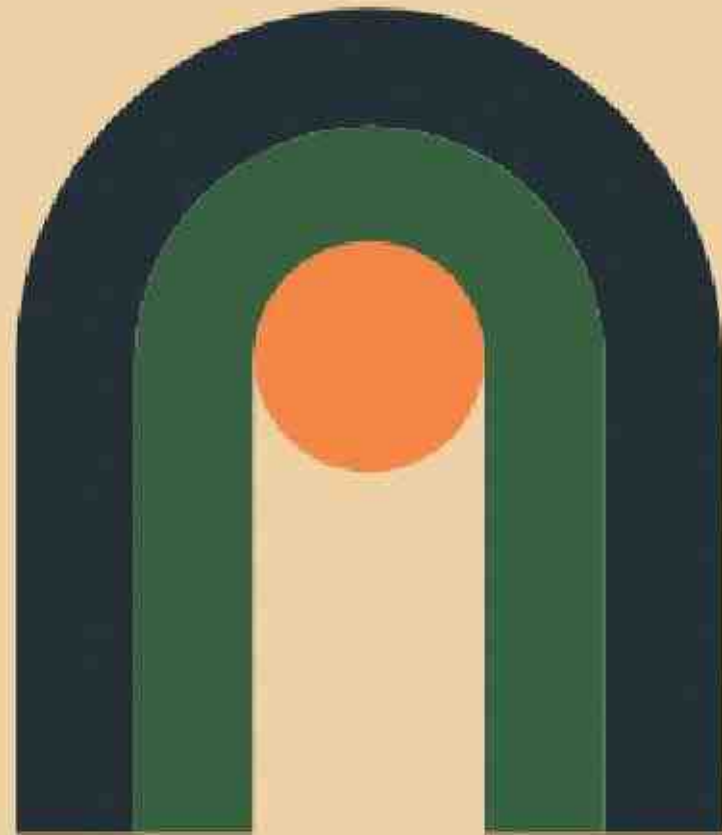


Table of Contents

- ABOUT (04)
- SITE MAP (05)
- EVENT LAWN (06)
- KITCHEN (08) ☺
- SALOON (10)
- CABINS (12)
- CONTACT (16)



MAKE IT MEMORABLE



Who We Are

Tucked away in Winter Park, Colorado our hotel + site provide guests with a genuine escape from everything except what's in front of them: the great outdoors (and a craft cocktail).

We've established a completely new standard of mountain-side hospitality in the Colorado mountains with our cozy, curated cabins and French, après-inspired F&B experience. Celebrating our surroundings — settled in the heart of the wild — we're providing guests with a true chance to unplug and enjoy nature.





Our 31 A-Frame Cabin hotel is nestled between the Fraser River and Winter Park Ski Resort. This 2-acre site is in the heart of Old Town Winter Park and is conveniently located to access the great outdoors, the ski resort or shops, and entertainment downtown. Our on-site Saloon and Restaurant create additional gathering spaces for guests to grab a stiffy, lounge, or plugin. Our sprawling event lawn invites groups to convene by the river's edge. A-Frame Club inspires the playful side in all of us.

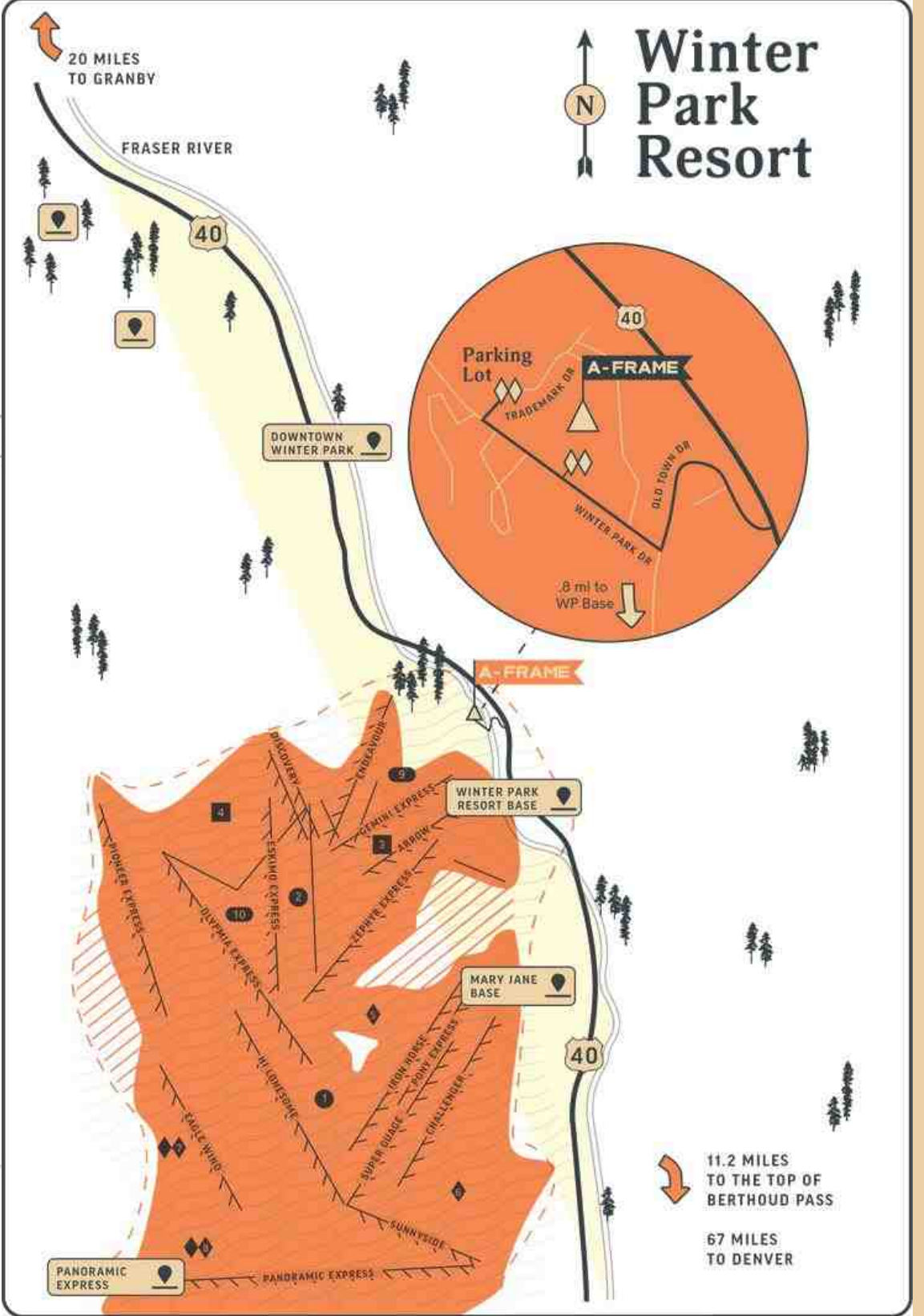
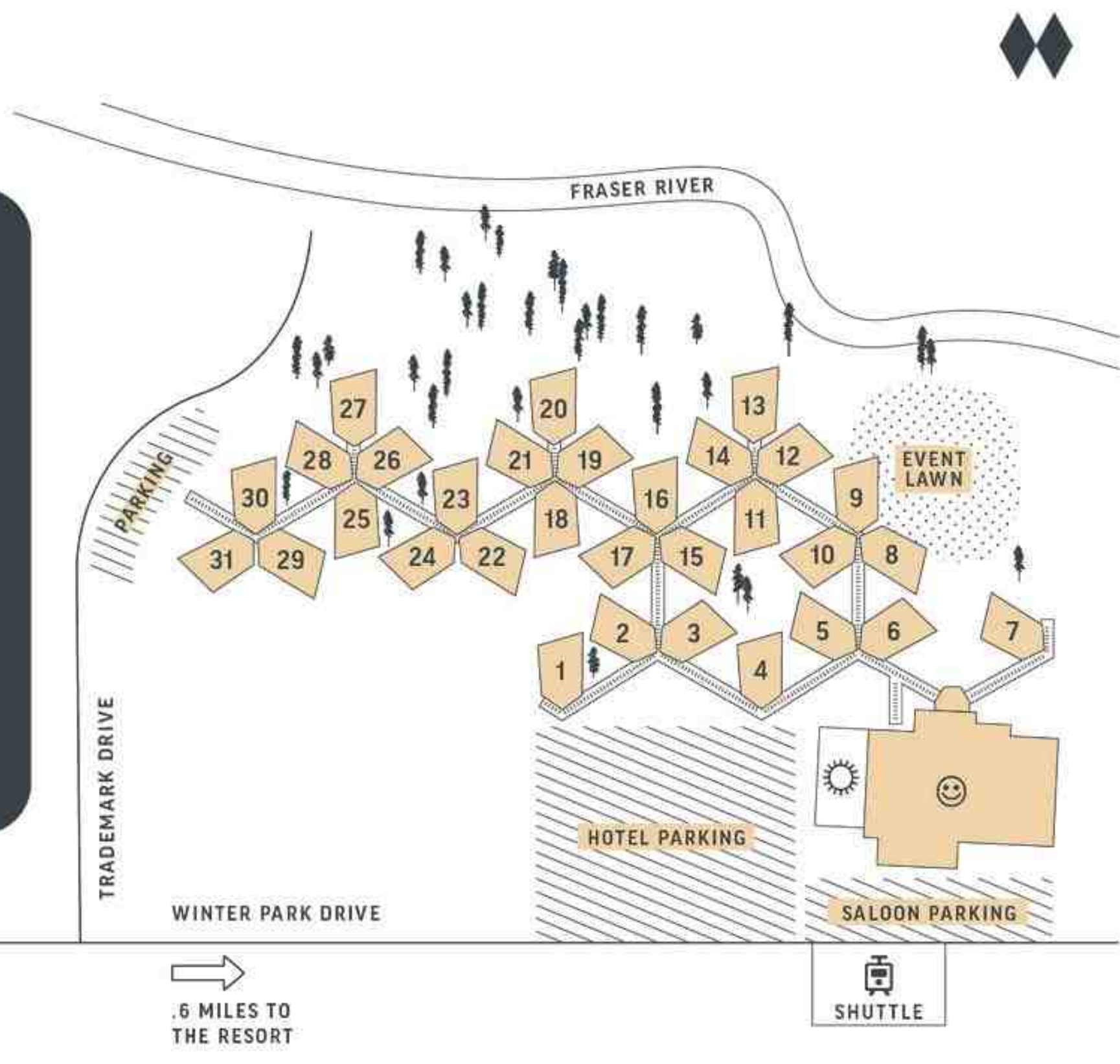
Winter Park/ CO 39° N, 105° W



Site Map

Key

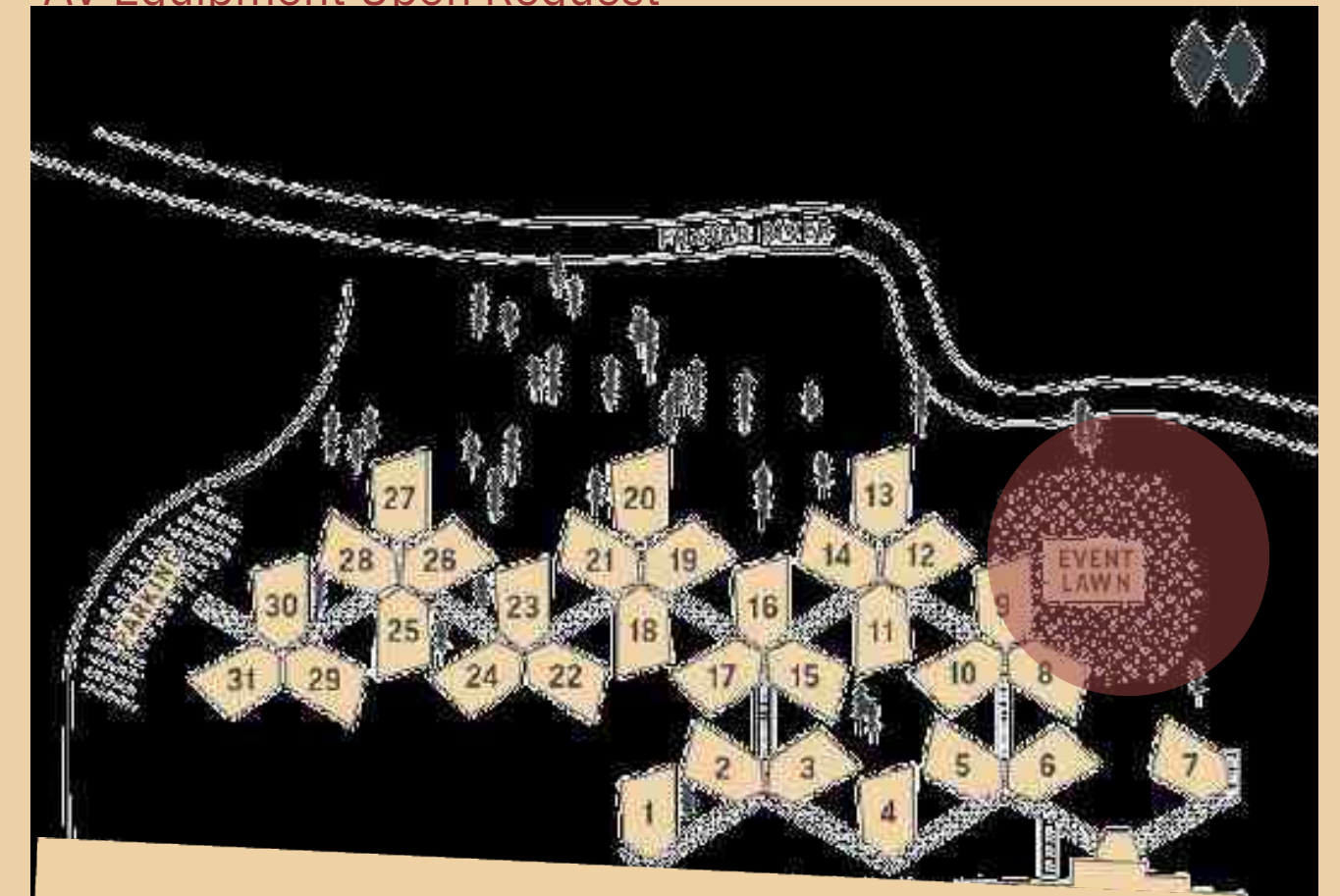
-  CABIN
-  PARKING
-  SALOON
-  BAR PATIO
-  EVENT LAWN
-  SHUTTLE



Riverside Lawn

Once the snow melts, host your event alongside the Fraser River on our sprawling event lawn. In direct proximity to our Saloon, enjoy drinks and dining with your closest and dearest.

Mobile Bar
AV Equipment Upon Request



07/20



Restaurant

Wood-fired, French-Alpine Inspired

The Saloon at A-Frame Club has exactly what you're looking for, a stiff drink and a menu full of locally sourced, flavorful classics.

Food isn't just fuel — it's an experience. Sate your senses with our French-inspired menu, which will have you tantalized with every entrée and inspired with each sip of our expertly selected spirits.

Menu Highlights:

French Onion Soup
Tomahawk Steak with Wood Fired Potatoes
Tuna Tartar Boats





Original Saloon

Champagne at any hour.

Built around the original 1800s bar from the Moffat Tunnel - The Saloon at A-Frame Club is an eternal watering hole. Our talented bartenders craft the tastiest cocktails in Grand County.

Favorite Sips:

Rotating Local Draft
Mezcal Monk Cocktail
Large Format Cocktails to-go

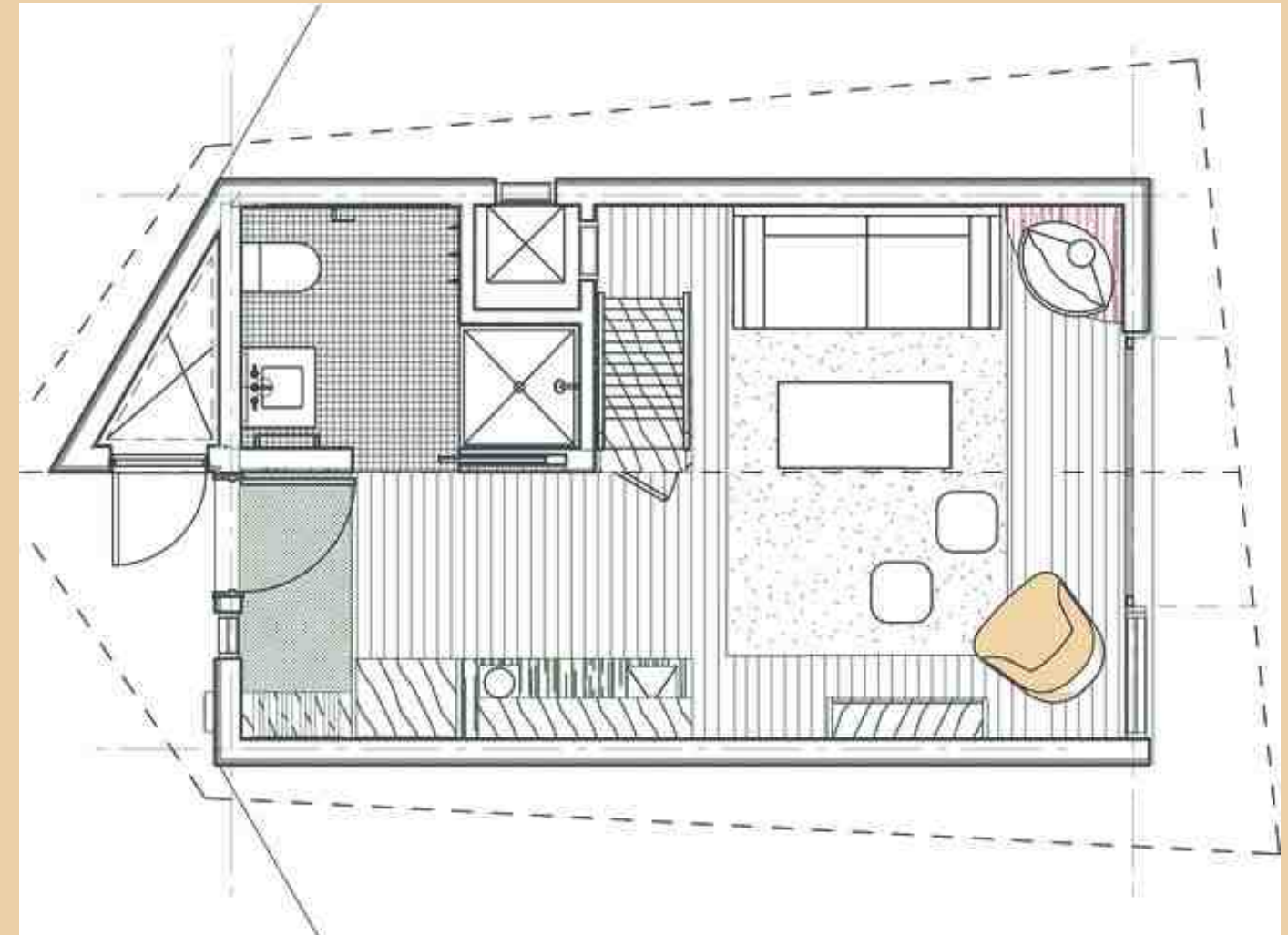






Cabins

Our mid-century-inspired, A-Frame cabins offer guests their own sanctuaries to stay cozy all four seasons. Tall ceilings, beautiful birch wood throughout, special touches like a soaking tub, kitchenette, custom Malm fireplaces, and incredible views — you experience a better kind of mountain life when you stay with us.





Room Blocks

- 31 Cabins
(2 ADA)
- Sleeps up to 4 per cabin
(1 King Bed + 1 Sleeper Sofa)

Cabin Amenities

Dog-Friendly ▲ In-Room Malm Fireplace ▲ Onsen Style Soaking Tub ▲ Fully Equipped Kitchenette ▲ Expansive Mountain Views ▲ On-Site Bar and Restaurant ▲ High Thread Count Linens ▲ Plush Robes and Slippers ▲ Private Outdoor Patio ▲ Firepits ▲ Ski + Equipment Storage ▲ Smart TV ▲ Custom, Locally Designed Furniture ▲ Original David Hiser Artwork ▲ Vintage Pendleton Accents ▲ Boot Heater ▲ gigabit Wifi



SITE

31 cabins • 2 acres

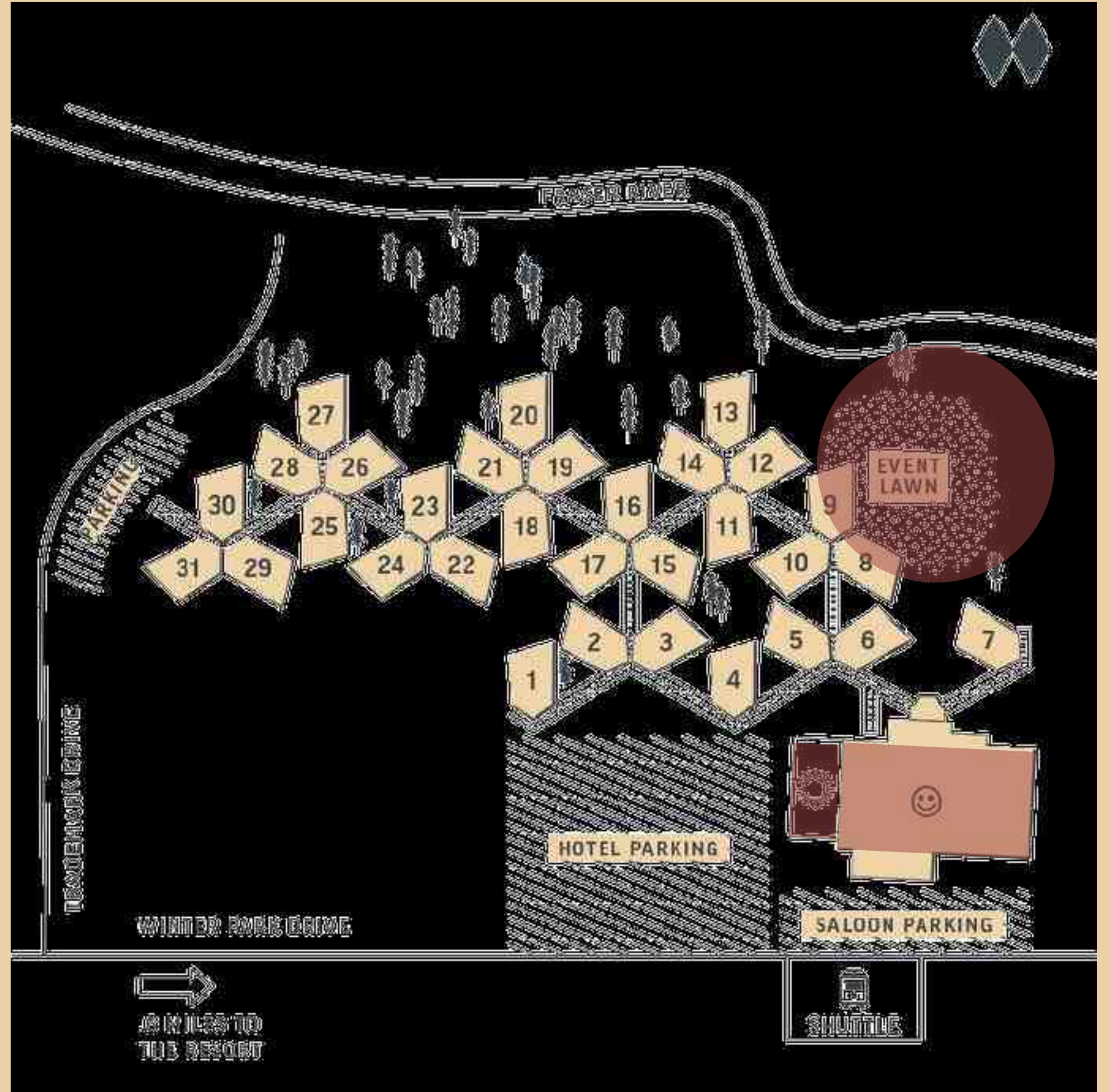
SALOON + RESTAURANT

2270 SF • 50 seated CAPACITY

100 person reception style CAPACITY
970 SF • PATIO INCLUDED

EVENT LAWN

RIVERSIDE • 100 CAPACITY



All Inclusive Wedding Packages

Honeymoon Cabin

2 NIGHTS STAY

CEREMONY

RECEPTION



CONSULTATION

\$200 F+B TASTING

4 HOURS OF STAFF

Lodging is subject to seasonal pricing and the current base nightly rate. Higher room rates, rental fees, and F&B minimums will be in place for holidays (Memorial Day, 4th of July, Labor Day, Thanksgiving, Christmas, New Years)

Winter /Spring (December 1st - April 30th)

\$16,500 Venue Rental
Flat fee Friday - Sunday

\$5,000 Venue Rental
Flat fee for Monday -Thursday

\$13K** Food and Beverage Minimum for
Wedding Day

- Based on a capacity of 50 during these months due to only having access to indoor space
- Outdoor Patio Space, Saloon, Dining Room



Summer/Fall (May 1st - November 30th):

\$22K Venue Rental
Flat fee for Friday - Saturday

\$10K Venue Rental
Flat fee for Sunday - Thursday

\$13K** Food and Beverage Minimum for
Wedding Day

- Based on a capacity of 100 during these months due to outdoor event lawn space being accessible
- Event Lawn, Outdoor Patio Space, Saloon, Dining Room

Professional wedding planning services are required. Please reach out and inquire about our preferred vendors list. Patio not rented on its own.

FOOD AND BEVERAGE PACKAGES

Bluebird

\$190/ PP

Pick Two Passed
Appetizers

Salad

Choice of Two Proteins

Choice of Two Sides



Black Diamond

\$225/ PP

Pick Three Appetizers
One Stationary + Two
Passed

Two Salads

Choice of Two Proteins

Choice of Two Sides



Expert Terrain

\$265/ PP

Pick Four Appetizers
Two Stationary + Two
Passed

Two Salads

Choice of Three Proteins

Choice of Three Sides



BAR PACKAGES

Customize any package with Wine Upgrades, Wine Service during Dinner, Shotski with custom "shots", Champagne Tower, Champagne Greeting or Champagne Toast, Craft/Signature Cocktails, To-Go signature cocktails for rooms + outings.

Well

\$75/ PP
for 4 hours

\$12/ PP per
Additional Hour

Includes 2 beers,
house red, house
white, sparkling wine,
well liquor with
standard mixers +
garnishes



Premium

\$125/ PP
for 4 hours

\$14/ PP
per Additional Hour

Includes 4 beers,
premium red, premium
white, sparkling wine,
premium liquor with
standard mixers +
garnishes



Contact

events@aframeclub.com

Hotel: 970-627-4637

www.aframeclub.com

[@aframeclub](#)