



**DOWNTOWN HONOLULU'S  
EXECUTIVE PLAYGROUND**

MEETINGS & EVENTS



# THE MEETING ROOMS

## ALAKEA

Daily Room Rental: \$1,000

Dimensions: 39' long x 25' wide | 965 sq ft

Ceiling Height: 7' 9"

Banquet Seated: Up to 60 guests

School Seating: Up to 25 guests

Maximum Guests: Up to 65 guests

## BISHOP BALLROOM

Daily Room Rental: \$2,500

Dimensions: 32' long x 45' wide | 1,454 sq ft

Ceiling Height: 7' 9"

Banquet Seated: Up to 110 guests

School Seating: Up to 60 guests

Maximum Guests: Up to 135 guests

## BISHOP I

Daily Room Rental: \$850

Dimensions: 32' long x 15' wide | 485 sq ft

Ceiling Height: 7' 9"

Banquet Seated: Up to 35 guests

School Seating: Up to 20 guests

Maximum Guests: Up to 45 guests

## BISHOP II

Daily Room Rental: \$850

Dimensions: 32' long x 15' wide | 485 sq ft

Ceiling Height: 7' 9"

Banquet Seated: Up to 35 guests

School Seating: Up to 20 guests

Maximum Guests: Up to 45 guests

## BISHOP III

Daily Room Rental: \$850

Dimensions: 32' long x 15' wide | 485 sq ft

Ceiling Height: 7' 9"

Banquet Seated: Up to 35 guests

School Seating: Up to 20 guests

Maximum Guests: Up to 45 guests

## EVENT SALES

Bailey Sullivan

[hnlac-sales@marriott.com](mailto:hnlac-sales@marriott.com) | 508.298.8194

*Mandatory 21.25% Gratuity, 3.75% Admin Fee, & 4.712% Sales Tax Will Be Added to the Room Rental and Food & Beverage Total.*



## THE MEETING ROOMS



Two Bishop Rooms Combined in Classroom Setup



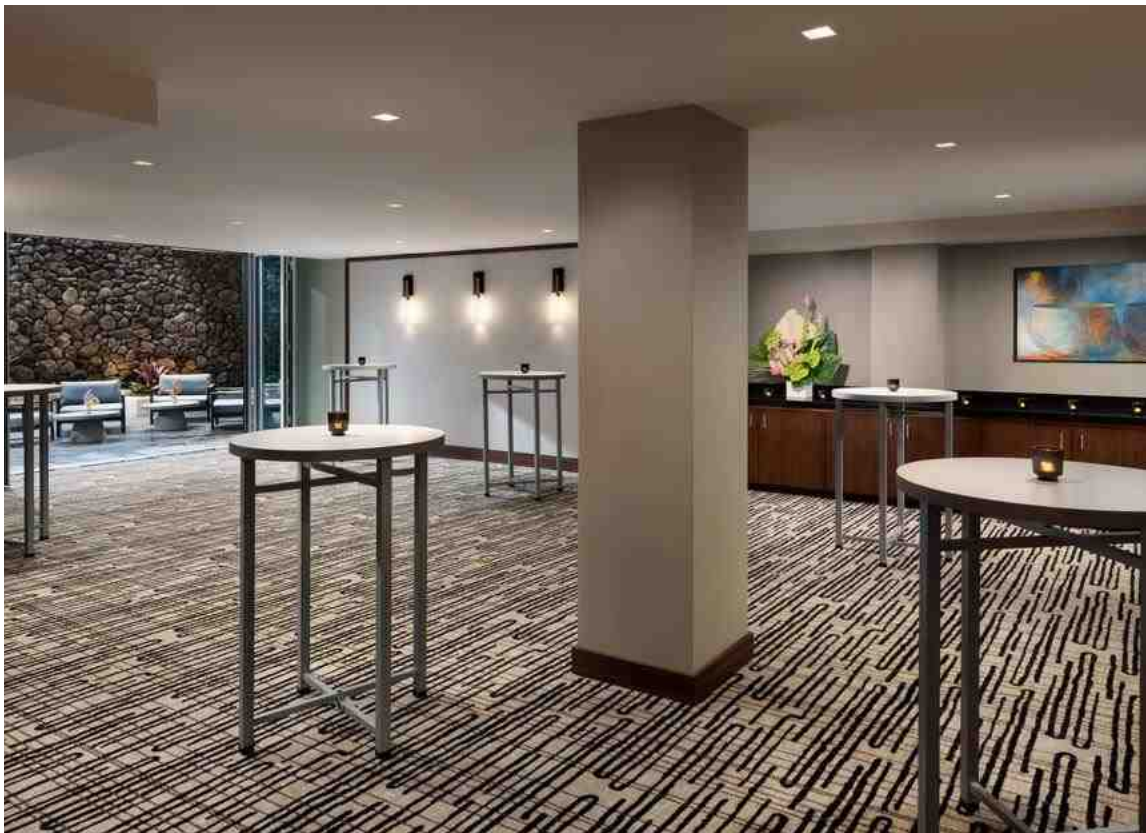
Single Bishop Room in U-Shape Setup



## THE MEETING ROOMS



Bishop Ballroom Social Setup



Alakea Room Cocktails/Reception Setup





MENUS



# EXPRESS DAY MEETING PACKAGE 1

Includes: Screen and Projector, WiFi, Room Set Up, Dedicated Staff

HALF DAY: \$42++ PER PERSON | ALL DAY: \$64++ PER PERSON

## BOX BREAKFAST

### BREAKFAST SANDWICH

choice of

### BREAKFAST BURRITO

Scrambled Eggs, Cheese, Bacon, Bell  
Peppers, Caramelized Onions

HAM, EGG, CHEESE CROISSANT SANDWICH

### SCONES

## BREAK

REGULAR COFFEE, TEA, WATER STATION,  
ASSORTED SODAS, ASSORTED BAGS OF CHIPS,  
INDIVIDUAL GRANOLA BARS, AC COOKIE

## AV ADD-ONS

PROJECTOR SUPPORT PACKAGE: \$270

WIRELESS MICROPHONE: \$100

SPEAKER: \$150

FLIP CHART: \$50

## EXPRESS DAY MEETING PACKAGE 2

Includes: Screen and Projector, WiFi, Room Set Up, Dedicated Staff

HALF DAY: \$56++ PER PERSON | ALL DAY: \$75++ PER PERSON

### CONTINENTAL BREAKFAST

#### JUICE

choice of

ORANGE, PASSION-ORANGE GUAVA(POG), PINEAPPLE

#### SEASONAL SLICED FRUIT

#### YOGURT PARFAIT

Greek Yogurt, Granola, Berries

#### OVERNIGHT OATS

#### AC BAKERY SELECTIONS

Croissants, Scones, Banana Bread

### BREAK

REGULAR COFFEE, TEA, WATER STATION,  
ASSORTED SODAS, ASSORTED BAGS OF CHIPS,  
INDIVIDUAL GRANOLA BARS, AC COOKIE

## EXPRESS DAY MEETING PACKAGE 3

Includes: Screen and Projector, WiFi, Room Set Up, Dedicated Staff

HALF DAY: \$82++ PER PERSON | ALL DAY: \$92++ PER PERSON

### BREAKFAST BUFFET

#### JUICE

choice of

ORANGE, PASSION-ORANGE GUAVA(POG), PINEAPPLE

#### SEASONAL SLICED FRUIT

#### YOGURT PARFAIT

Greek Yogurt, Granola, Berries

#### OVERNIGHT OATS

#### AC BAKERY SELECTIONS

Croissants, Scones, Banana Bread

#### SCRAMBLED EGGS

BACON, SAUSAGE, BREAKFAST POTATOES

### AM BREAK

REGULAR COFFEE, TEA, WATER STATION

### PM BREAK

REGULAR COFFEE, TEA, WATER STATION,  
ASSORTED SODAS, ASSORTED BAGS OF CHIPS,  
INDIVIDUAL GRANOLA BARS, AC COOKIE



## ADD-ON OPTIONS

Pre-Order Required

### BREAK

**\$26++ PER PERSON**

REGULAR COFFEE, TEA, WATER STATION,  
ASSORTED SODAS, ASSORTED BAGS OF CHIPS,  
INDIVIDUAL GRANOLA BARS, AC COOKIE

### BOX LUNCH

**\$42++ PER PERSON**

Includes: Bag Of Chips, AC Signature Cookie, Whole Fruit

### SANDWICH

choice of

#### CHICKEN SALAD SANDWICH

Croissant

#### FRIED CHICKEN WRAP

Lettuce, Tomato, House Pickles, Honey Mustard

#### VEGGIE WRAP

Roasted Bell Pepper Hummus, Garbanzo Beans, Dill,  
Cucumber, Tahini, Tomato, Lettuce, Spinach Tortilla

## LUNCH BUFFET

**\$62++ PER PERSON**

### CAESAR SALAD

### HOUSE SALAD

### BREAD

### PROTEIN

select 2

DAILY CATCH

GRILLED CHICKEN

FLANK STEAK

### STARCH

select 1

RICE

CRISPY POTATOES

### DESSERT

COOKIES

STRAWBERRY SHORTCAKE

# NETWORKING RECEPTION PACKAGE

## PUPUS

choice of 2 | 25 guest minimum

**\$16++ PER PERSON**

**ADDITIONAL PUPUS \$8++ PER PERSON**

**RISOTTO**

**SLIDERS**

**FLATBREAD**

**HOUSE MADE JERKEY**

**JALAPENO POPPERS**

**LEMONGRASS CHICKEN TACO**

**MINI FRIED MALA CHICKEN**

## BAR OPTIONS

**BEER & WINE PACKAGE**

**2 HOURS | \$35++ PER PERSON**

**BAR PACKAGE**

**2 HOURS | \$55++ PER PERSON**

**HOSTED BAR**

DOMESTIC, IMPORT BEER \$9

CRAFT BEER \$10

HOUSE RED & WHITE WINE \$14

option to upgrade

DELUXE SPIRITS \$16

option to upgrade to premium spirits

SODA, BOTTLED WATER \$7



# YOURS TRULY

Welcome to the must visit cocktail bar in the Downtown and Chinatown neighborhoods serving locals and travelers alike. Yours Truly features a menu of adventurous craft cocktails, punch bowls, beer, & wine poured in a dramatic, stylish space with a lively vibe and always welcoming atmosphere. The staff is knowledgeable, attentive, and never pretentious. Immerse yourself in an environment of rich velvet green fabrics, plush leather seating, and vintage post boxes, all reimagined to become Honolulu's best bar. Hidden within Yours Truly, for the #IYKYK crowd, are some special surprises drawing inspiration from traditional tiki bars. The Yours Truly experience comes to life with guest artist performances, comedy nights, sketch culture doodle pads, temporary tattoos, karaoke, and an interactive A.I. photo booth, all affording guests an evening of truly unique and memorable wonderment in tribute to the Hawaiiana exotica era. Enjoy an evening of laughter, drinks, entertainment, and intrigue at Yours Truly cocktail bar.

## FULL BUYOUT

Sun–Thu Room Rental: \$1,500

Food & Beverage Minimum: \$5,000

4 Hours

Maximum Guests: Up to 73 guests

## BACKROOM

Sun–Thu Room Rental: \$1,000

Food & Beverage Minimum: \$2,000

2 Hours from 4pm–6pm or 5pm–7pm

Maximum Guests: Up to 28 guests

## EVENT SALES

Bailey Sullivan

[hnlac-sales@marriott.com](mailto:hnlac-sales@marriott.com) | 508.298.8194

*Mandatory 21.25% Gratuity, 3.75% Admin Fee, & 4.712% Sales Tax Will Be Added to the Room Rental and Food & Beverage Total.*



# THE DOTTED LINE

Located in downtown Honolulu, The Dotted Line is the ideal restaurant and bar for breakfast, lunch, pau hana, and dinner for the local business power players, casual diners, and travelers alike. Serving a quintessential European breakfast, all-day menu of Asian-Inspired craveable dishes, and social-scene pau hana - The Dotted Line is a culinary destination for diversified occasions. Set among floor-to-ceiling wrap-around windows that invite the island-sunlight by day and surrounded by a cityscape of big deals and even bigger power players by night, all of whom transformed Honolulu's central business district into an executive playground.

## FULL BUYOUT

**Daily Room Rental: \$\$3,000**

**Food & Beverage Minimum: \$7,000**

**4 Hours**

**Seated or Buffet: Up to 50 guests**

**Reception with Existing Setup: Up to 100 guests**

## EVENT SALES

**Bailey Sullivan**

**hnlac-sales@marriott.com | 508.298.8194**

*Mandatory 21.25% Gratuity, 3.75% Admin Fee, & 4.712% Sales Tax Will Be Added to the Room Rental and Food & Beverage Total.*







## MEETINGS & EVENTS

[hnlac-sales@marriott.com](mailto:hnlac-sales@marriott.com) | 508.298.8194