

# SPECIAL EVENTS

The MOUTH Bar & Kitchen  
Brooklyn Art Haus



20-26 Marcy Ave.  
Brooklyn, NY 11211  
[www.BKArtHaus.com](http://www.BKArtHaus.com)  
[www.TheMouthBK.com](http://www.TheMouthBK.com)  
@BK\_ArtHaus @TheMouthBK





## ***WELCOME TO OUR HAUS!***

The MOUTH and Brooklyn Art Haus are two exhilarating venues that synthesize radical performances and intoxicating food and drink. Featuring a versatile performance space, gallery and lounge, full bar and kitchen, we offer space options designed for togetherness and melting into beautiful moments. We boast daily operation with a fun and knowledgeable staff that facilitates a top tier cocktail program, natural wine list and local beers served alongside Mediterranean-American fare designed to both entice and allure guests of all types. We invite you to make The MOUTH and Brooklyn Art Haus your new home for art and hospitality!

# VENUE CAPACITY

**Total Capacity: 250**

**Dining Room: 50**

**Bar: 50**

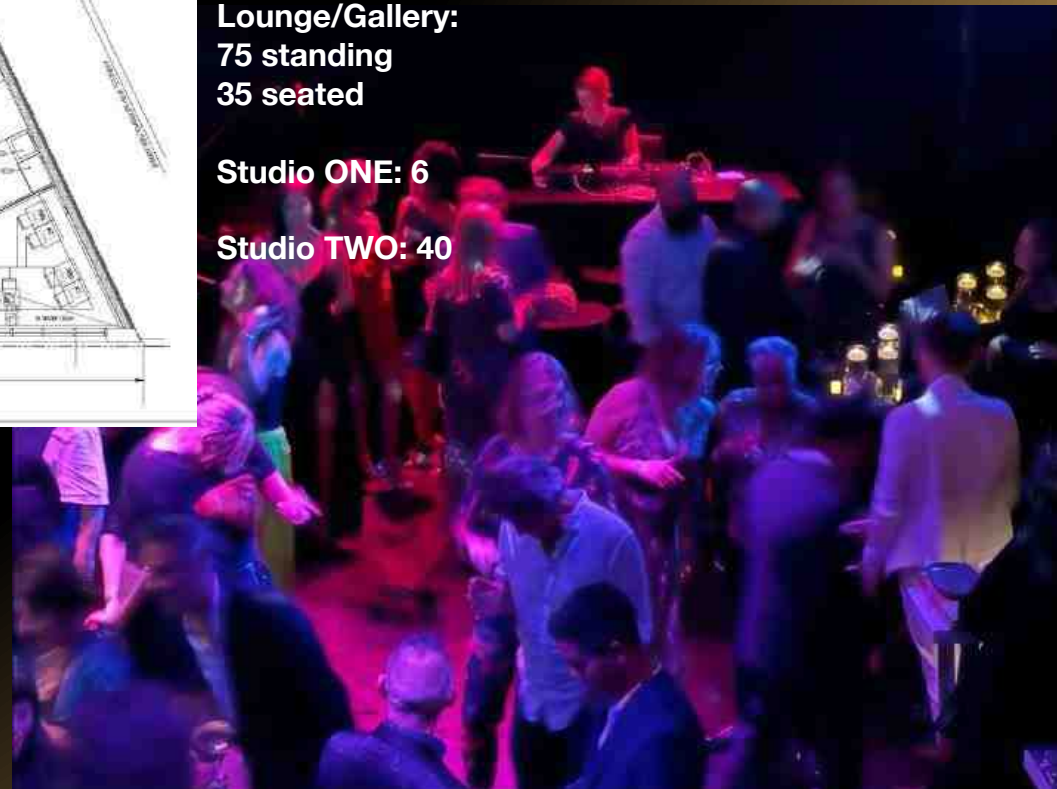
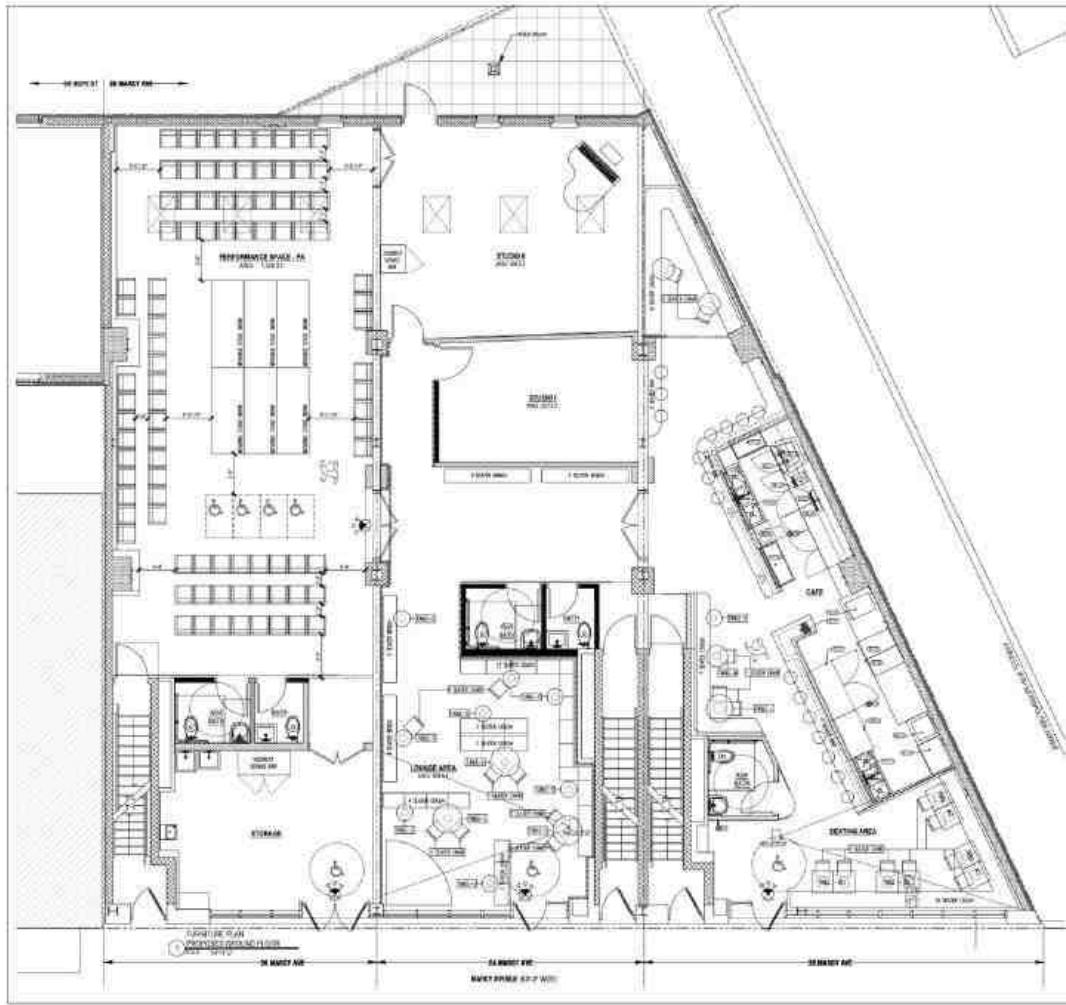
**Club Haus: 12**

**Main Theater:**  
150 standing  
100 seated for performance/screening  
50 seated for dining

**Lounge/Gallery:**  
75 standing  
35 seated

**Studio ONE: 6**

**Studio TWO: 40**





# VENUE FEATURES

**PARTIES**  
**FILM PREMIERES**  
**NIGHTLIFE**  
**CIRCUS**  
**LIVE MUSIC**  
*and more ;)*







**THE  
MOUTH**  
BAR + KITCHEN





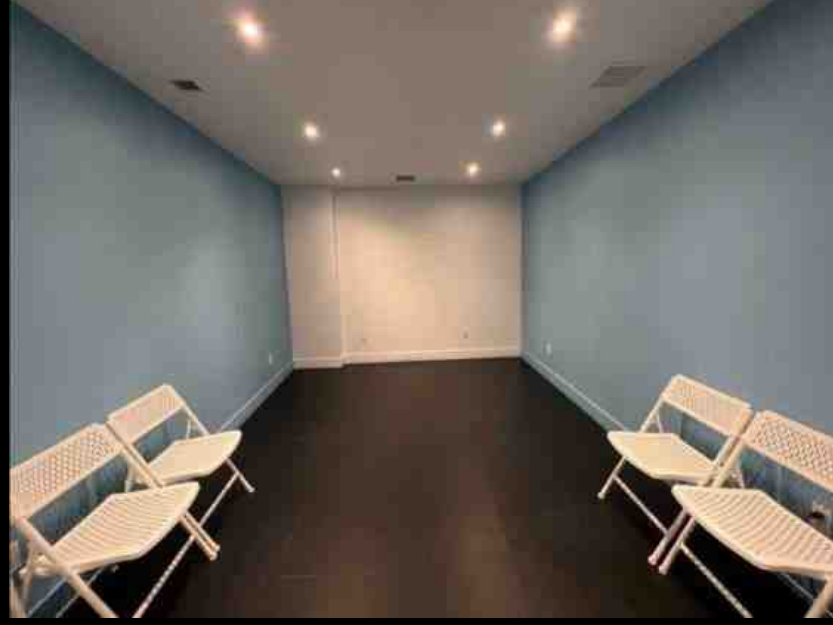
# BAH GALLERY



**DRESSING**



**STUDIO 1**



**PODCAST**



**STUDIO 2**

# THEATER PRICING

(3-hour minimum)

## DAYTIME (daily before 5pm)

\$125/hr (no lighting or sound elements)

\$175/hr (includes lighting and sound elements, technician provided by renter)

\$210/hr (includes lighting and sound elements, technician provided by BAH)

## EVENING

Monday to Thursday (daily after 5pm)

\$500/hr (no lighting or sound elements)

\$550/hr (includes lighting and sound elements, technician provided by renter)

\$585/hr (includes lighting and sound elements, technician provided by BAH)

## ADDITIONS

Food and Beverage package information is available by clicking visiting [www.cafeartistesbk.com](http://www.cafeartistesbk.com)

\$500 (flat rate) streaming/recording of event

\$500 (flat rate) 360-degree projection mapping during event

Entertainment recommendations provided by BAH at negotiated rates

# GALLERY PRICING

(3-hour minimum)

## DAYTIME (daily before 5pm)

\$75/hr

## EVENING (daily after 5pm)

\$125/hr

## ADDITIONS

Food and Beverage package information is available by visiting [www.themouthbk.com](http://www.themouthbk.com)

Entertainment recommendations provided by BAH at negotiated rates







# STUDIO 1 PRICING

(3-hour minimum)

DAYTIME (daily before 5pm)  
\$50/hr

EVENING (daily after 5pm)  
\$75/hr

## ADDITIONS

Food and Beverage package information is available by visiting [www.themouthbk.com](http://www.themouthbk.com)  
Entertainment recommendations provided by BAH at negotiated rates

# STUDIO 2 PRICING

(3-hour minimum)

DAYTIME (daily before 5pm)  
\$75/hr

EVENING (daily after 5pm)  
\$125/hr

## ADDITIONS

Food and Beverage package information is available by visiting [www.themouthbk.com](http://www.themouthbk.com)  
Entertainment recommendations provided by BAH at negotiated rates

# PRIVATE EVENT FOOD & BEVERAGE PRICING

*Available for groups of 8 or more*

## COFFEE & PASTRY PACKAGE

\$10 person

## LUNCH PACKAGE

*Selection of 4-8 options*

\$25-75 per person (food only)

\$35-85 per person with non-alcoholic beverages

## PASSED HORS D'OEUVRES

*Listed rates per person, per hour*

Choice of 3: \$25

Choice of 6: \$40

Choice of 8: \$60

## TABLESCAPE

*Selection of 4-8 options (\$1000 min spend)*

## BUFFET

*Selection of 4-8 options*

\$50-120 per person

## PLATED DINNER

*(\$15 added per person to above Buffet rates)*

## DESSERT

\$15-30 per person

\$50 outside cake cutting fee





# OPEN BAR PACKAGE PRICING

*Available for groups of 8 or more  
3-hour minimum*

## BRONZE

1 Local Beer + 3 Natural Wines + 1 Signature Cocktail + Sodas + Coffee  
\$25 per person, per hour

## SILVER

2 Local Beers/Cider + 3 Natural Wines + Well Liquor + House Cocktails + Sodas + Coffee  
\$30 per person, per hour

## GOLD

2 Local Beers/Cider + 3 Natural Wines + Full Liquor + House Cocktails + Sodas + Coffee  
\$40 per person, per hour

## PLATINUM

4 Local Beers/Cider + 6 Natural Wines + House Cocktails + Unique Specialty Cocktail + Full Liquor & Top Shelf Liquor + Sodas + Coffee; *Specialty Cocktail to be developed alongside BAH's in-house mixologist*  
\$65 per person, per hour

# TERMS & CONDITIONS

Deposit: A non-refundable 50% deposit is required at the time of the booking to guarantee a date and time. The remaining balance is due in full at the conclusion on the day of the event.

Cancellations: The deposit is non-refundable. Please see below for cancellation information:

- Cancellations made more six months before the event will not be charged any percentage of the remainder
- Cancellations made between six and four months before the event will be charged 25% of the remainder
- Cancellations made between four and two months before the event will be charged 50% of the remainder
- Cancellations made between two months and four weeks before the event will be charged 75% of the remainder
- Cancellations made within four weeks of the event will be charged the full remainder price

Force Majeure: In the event either party is unable to perform its obligations under the terms of this Agreement because of acts of God, strikes, equipment or transmission failure or damage reasonably beyond its control, or other causes reasonably beyond its control, such party shall not be liable for damages to the other for any damages resulting from such failure to perform or otherwise from such causes.

Tax and Gratuity: All rates listed above are pre-tax. All events will be charged a standard 8.875% sales tax and 20% gratuity.

Food and Beverage Menu: Final menu choices must be made no later than two weeks in advance.

Film or Other Media: Final versions of all media files for projection on big screen in the theater or projectors in the main space must be submitted for testing by Brooklyn Art Haus team one week in advance.

Buy-Outs & Venue Rentals: For Buy-Outs and Venue Rentals, clients are responsible for special event liability insurance. The insurance must at renter's sole expense, provide and maintain public liability and personal property damage insurance, insuring any independent contractors or vendors. If alcohol is to be served during a buy-out or venue rental, please make sure that the policy includes Host Liquor Liability coverage to protect you against alcohol-related accidents, as you are ultimately liable for the safety of your guests. Established Catering Services may use their license and insurance to cover this. Any caterers and/or outside vendors, companies and/or institutions must provide a copy of their certificate of insurance and Catering License to Brooklyn Art Haus, LLC one month prior to the event.

Liability: Client agrees to indemnify, defend and hold Brooklyn Art Haus, its landlord, building owners, and employees harmless of and from any liabilities, cost, penalties or expenses arising out of and/or resulting from the rental and use of the premises including but not limited to the personal guarantee of provisions, service and dispensing of payment by renter.

Site Decoration: Brooklyn Art Haus staff only will rearrange and move any furnishings, including but not limited to artwork, lamps or seating. NO nails, screws, staples, or penetrating items are to be used on our walls or floors. No glitter or foil confetti is allowed on site. Only low tack tape is allowed on floors and walls. Any damage will be charged after the event.

Damages: In the unlikely event that damage to any Brooklyn Art Haus property occurs as a result of any guest related to the private event, the client agrees to assume all liability and expense and agrees that, in addition to any other rights as against such guest or others, Brooklyn Art Haus may charge the client for all such charges.

Lost & Found: Brooklyn Art Haus takes no responsibility for personal effects and possessions left on premises during or after any event. We do however maintain a lost and found and will hold recovered items up to 30 days. Every attempt will be made to return any recovered item to its rightful owner.



# SEE YOU SOON!



**CONTACT**

**HELLO@BKARTHAUS.COM**

**WWW.BKARTHAUS.COM**

**@BK\_ARTHAUS**

**@THEMOUTHBK**

