

FIGGE ART MUSEUM

Weddings



Congratulations On Your Engagement!

Step into a world where art meets romance at the Figge Art Museum.

Our wedding packages offer everything you need in a venue, plus a blend of breathtaking river views, an immersive art experience, and modern yet timeless aesthetic. Discover the allure that has made us the premier choice for couples and begin your journey of forever in a venue that's as extraordinary as your love story.



FIGGE ART MUSEUM

Weddings

Start planning your wedding at the Figge Art Museum with our inclusive packages, Certified Wedding Professionals, Modern Architecture, and Touch of Art, Culture and Elegance.

FIGGE Signature Wedding

- Grand Lobby
- Riverview Dining Room
- South River Room
- Riverview Patio
- Bar Area
- All Tables & Chairs
- All Floor Length Linens in White or Black
- Cloth Napkins in White, Black or Color
- Glass Barware (Disposables for Outdoors)
- Professional Venue Planning and Overall Guidance by a Certified Wedding Planner
- Custom Floor Plan
- Wedding Venue Online Client Portal and Optional Wedding Website with RSVP Tracking
- Preferred Vendor List & Guidance to Building An Amazing Wedding Team
- Full Museum Access for Your Guests
- (up to 2 Hours)
- One Year Household Membership
- (Keep for yourself or gift to someone else!)
- Signature Figge Art Museum Wedding Gift

Investment \$7500

*Your event supports our mission and
the arts in our community*

FIGGE ART MUSEUM *Weddings*

FIGGE Accent Wedding

- Grand Lobby
- Riverview Dining Room
- South River Room
- Riverview Patio
- Bar Area
- All Tables
- ***Chiavari Chairs in Gold, Silver or Black***
- All Floor Length Linens in White or Black
- Cloth Napkins in White, Black or Color
- Glass Barware (Disposable for Outdoors)
- Professional Venue Planning and Overall Guidance by a Certified Wedding Planner
- Custom Floor Plan
- Wedding Venue Online Client Portal and Optional Wedding Website with RSVP Tracking
- Preferred Vendor List & Guidance to Building An Amazing Wedding Team
- Full Museum Access for Your Guests
- (up to 2 Hours)
- One Year Household Membership
- (Keep for yourself or gift to someone else!)
- Signature Figge Art Museum Wedding Gift

Investment \$9000

*Your event supports our mission and
the arts in our community*





Intimate Ceremonies Elopements Vows Renewals

Up to 8 People in Attendance Including Couple and Officiant

*Sunday - Wednesday
2 Hours for Ceremony and Photos*

Exchange or renew vows in a
beautiful and unique setting
among artworks in the
Community Gallery or Wintergarden

Investment \$300

FIGGE ART MUSEUM *Weddings*

Rehearsal Dinner

Post-Wedding Brunch

- Riverview Dining Room
- Riverview Patio
- Bar Area
- Cloth Napkins in White or Black
- Signature FIGGE Vases with Floral Stems

Investment \$250

**when your wedding or reception is booked with the Figge
for the same weekend*

Museum Gallery Access

(up to 2 Hours)

Give your guests an experience to remember
and an opportunity to enjoy all the Figge Art
Museum has to offer. Docent tours and Gallery

Hosts are included.

Investment \$500

Extended Hours

Keep the celebration going by extending your
evening to Midnight or 1 am

\$200 Per Hour

*Your event supports our mission and
the arts in our community*



FAQ

We know that choosing your wedding venue is the first big step in planning and we're so happy you're here! We also know that there a lot of questions and decisions to be made, so we tried to lighten the load by providing answers to some common questions below.

Rental Hours

5:30 PM - 11:00 PM. Doors will open at 5:30 PM and end by 11:00 PM. Set Up can typically begin at 11am or Noon for friends/family who are helping. We will specify your set up time as we get closer and work with your vendors for their set up needs as well to ensure the day runs smoothly.

Ceremonies

Yes, you can absolutely have your ceremony at the Figge Art Museum. If also having your reception on-site, your guests will sit at their tables. You can also choose to have a more intimate ceremony in one of our other spaces. Because of the 5:30pm start time, we understand it may be difficult to fit in everything you are hoping for, so we do have the option to extend your rental time; OR allow us to introduce the *REVERSE WEDDING*- couples love this idea, guests love it and it adds a little something out-of-the-ordinary! *We cannot perform full room flips from the ceremony to reception.

Museum Access

You've likely chosen a package that includes museum gallery access. This is for up to 2 hours and allows access to all of our open exhibits, including the Family Activity Center. Additional Security, Gallery Hosts and Docent Tours are included.

Museum Membership

If you're already a member you can use the included membership to renew or gift to a family member or friend. If you're not a current member, than get ready to enjoy all that the Figge has to offer! If you're not local you can gift to a family member or friend.

Tables & Seating

Our round tables are 72" that seat 10 guests per table. Our rectangular banquet tables are 8ft long and seat 6 double-sided. We can provide rounds, banquet tables or a combination of both for a dynamic and custom floor plan. Our capacity is 200 for weddings and social events with entertainment and space for dancing.

Deposit & Insurance

We require a valid credit card on file for damages or excessive clean up. Additionally, we also require \$1M in event liability event insurance. This is typically included or can be added onto existing homeowner's plan or we have an insurance options that can be conveniently emailed to you and applied for and obtained online.

HOSTED BAR | BEVERAGE MENU

NON-ALCOHOLIC

Bottled Water \$3
 Infused Water Station \$25 (serves 25 people)
Choose One Per Station: Citrus, Cucumber or Berry
 Fountain Soft Drinks \$3
 Canned Soft Drinks \$3.50
 Bottled Iced Tea/Sparkling Water \$4

Coffee \$2 per person | \$40 per Urn
 Iced Tea \$2 per person | \$25 per station
 Lemonade \$3 per person | \$32 per station
 Assorted Bubblr \$5.00 (minimum of six)
 Assorted Starbucks Glass Bottles \$5.00 (min. of six)

DOMESTIC BEER \$5

Bud Light
 Coors Light
 Miller Lite
 Busch Light
 Michelob Ultra
 Coors Banquet

CRAFT BEER \$6

Front Street Brewery Cherry Bomb Blonde
 Big Grove Easy Eddy
 Five Cities Pineapple Wheat Bikini Bottom
 Exile Ruthie
 Modelo

SELTZERS \$6

Choose One
 High Noon
 Florida Seltzer: Untitled Art (GF/VF)

WINES

\$25 BY THE BOTTLE | \$8 BY THE GLASS

WHITE

Chardonnay, Pinot Grigio, Sauvignon Blanc

RED

Pinot Noir, Cabernet Sauvignon

SPARKLING

House Champagne \$20
 Prosecco \$30
 Moscato D'Asti \$25

SPIRITS \$7 (starting)

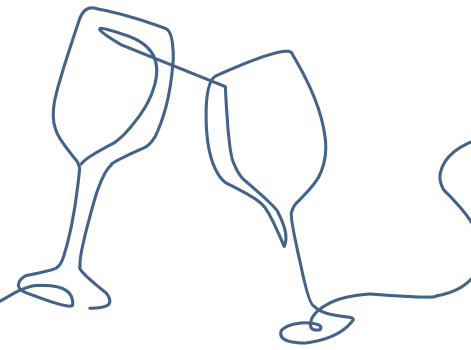
Inquire for Specialty
 Orders and
 Signature Cocktails
 to make your event
 one-of-a-kind!

FIGGE SIGNATURE COCKTAIL | PRICING PER REQUEST

Choose a Figge Signature Cocktail to feature at your event or give us your favorite recipe!

FIGGE ART MUSEUM

Event Bar



Need to Know

- We hold our own liquor license and insurance so you can celebrate, worry-free!
- We have years of experience with helping couples plan their wedding reception bar!
- All alcohol and beverages must be ordered through the Figge Art Museum.
- Outside alcohol is strictly prohibited.
- We always use glassware in our bar, for indoor events within our capacity (200 person event).
- We will use upscale clear disposable cups for water stations for large events and weddings.
- A \$150 Bartender Fee per bartender is applied, unless a minimum in bar sales of \$3500 is met before service charge. We automatically schedule at least 1 bartender per every 100 guests and 2 for cocktail hour.
- A service fee of 22% is applied to all hosted bars, beverages and all other items, excluding the rental.
- We do not serve shots.
- You may pre-pay your hosted bar otherwise you must present a card the night-of your event for full payment.
- We are a tax-exempt nonprofit organization. You will never be charged tax in our facility.





Choosing the fare and libations to be served on your wedding day is a big decision, but should be one of the most exciting and fun parts of wedding planning.

That is why we offer our couples flexibility with our NEW Open Catering Policy.

We are happy to provide recommendations for experienced and trusted caterers.

Policies

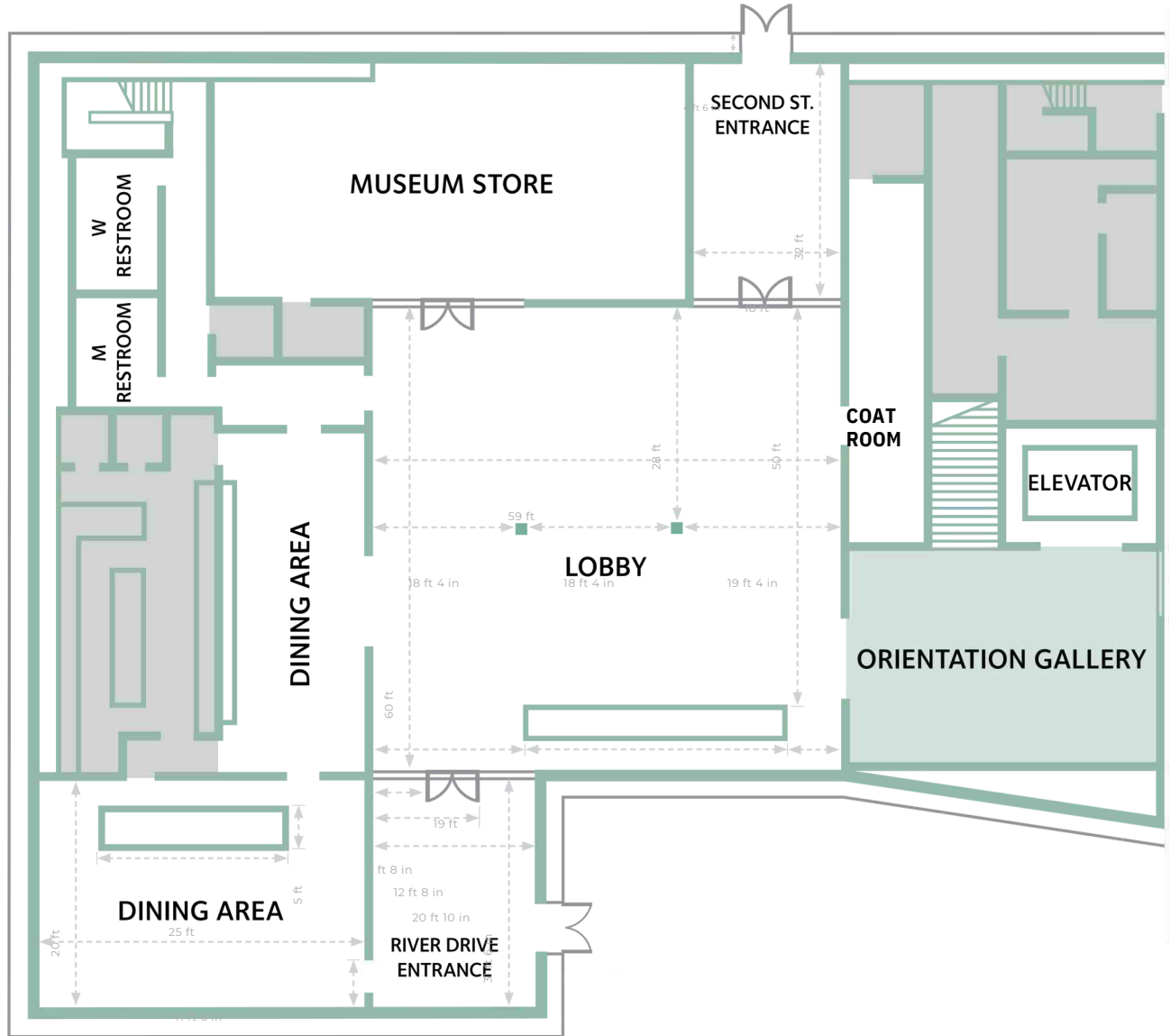
- All caterers must be licensed and insured and willing to sign our caterer policy agreement.
- Full Service & Banquet Staffing is Required for all weddings and special events.
- China, silverware or disposables must be provided by the client or caterer.
- Figge China, silverware and two service staff can be added for \$10 per person. *limited to dishware we carry in-house. Additional charges will be incurred for special orders or rentals.
- A water station can be added or full water service for \$3 per person.
- Wedding Cake and Desserts that will be available to all guests must be provided by a licensed bakery.
- Outside alcohol is strictly prohibited.

ProPlanner Tips

- When choosing hors d'oeuvres you will need to provide 2-3 pieces, per item, per person for light hors d'oeuvres. Heavy Hors d'oeuvres should consist of at least 3-6 pieces per item, per person.
- Schedule your tasting within the same calendar year as your wedding. Caterers often re-evaluate and make any necessary menu and pricing changes at the start of the new year.
- For a plated meal, Place Cards and Seating Assignments are **Required**. Place cards **MUST** have coding that indicates your guest's meal selection. *Please ask Josie about creative ways to code - you don't need to do pictures of animals or RBYG. Your caterer will thank you!!*
- Add a Late Night Snack or Food Truck - They are a huge WIN every time!
- Schedule a moment alone with each other either before or after your ceremony and make time to enjoy your dinner! You've spent so much time preparing for this day. It's time to relax and take it all in.

Floor Plan

We will create a floor plan that is tailored to your special day at the Figge Art Museum.



<i>Capacities</i>	Seated Wedding Reception	Ceremony Theater Seating (Ceremony Only)	Cocktail Event (Little or No Seating)
Grand Lobby	200	250	400
Dining Room	65	100	100

Parking

- Figge Art Museum Lot on 2nd Street. Directly outside the front entrance. Both sides available after 5pm on Weekdays and All Day Saturday & Sunday.
- River Drive Parking Lot (directly South from the Figge) has ample parking.
- Free Street Parking on 2nd Street, Main Street and Harrison Street after 5pm on Weekdays and All Day Saturday & Sunday.
- Parking Ramps: There are several parking ramps available in Downtown Davenport. The closest parking ramp is on Harrison and 2nd Street.
- Hotel Parking: For guests staying Hotel Blackhawk, The Current or the Double Tree in Downtown Davenport they can remain parked at their hotel (pending weather) and walk a short distance to the Figge Art Museum. Some hotels may have a shuttle available and guests can arrange on their own with their hotel.
- Busses and Shuttles can drop guests off in the bus loading area, at the end of our 2nd Street plaza and parking lot.



LET'S SAVE THE DATE!

You've selected your date and you're ready to begin planning your *Big Day* at the Figge Art Museum. What's Next?

Your full package rental rate is due at booking, along with your e-signature contract. We can make arrangements for 50% to be placed at booking if preferred.

Should you have any questions regarding the packages, payment, the contract, booking process or other please do not hesitate to contact us.

Contact Josie Cochuyt, Certified Wedding Planner and Director of Events, to reserve your wedding day at the Figge Art Museum!

(563) 345-6657

events@figgeartmuseum.org

We cannot wait to work with you and see you through 'I Do'!