

# Office Membership Plan

## Inventory:

- 63 > 280 sqft office spaces available.
- Furnished on request or unfurnished (standing desks, ergonomic chairs & lockable drawers to space capacity).
- Private, lockable space + security cameras.
- Lights, electricity, power plugs, switches.
- Onsite parking.

## Monthly membership fee includes:

- Communal luxury bathrooms and shared kitchen.
- Overheads: HVAC/ Heating, utilities, high speed wifi, amenities, pest control, janitorial services.
- Workspace for you + your team.
- Doorman/ concierge services.
- Free private phone booths.
- Conference room facility access.
- Amenities up keep inc. greenery.

## Set up fee covers:

- Loloft community app access.
- Keycard access.
- Decal sticker.
- Welcome packet.



## Tour

Book an onsite Consultation to explore your space options.

## Choose

Select your space.

## Move

Your membership starts on move in.

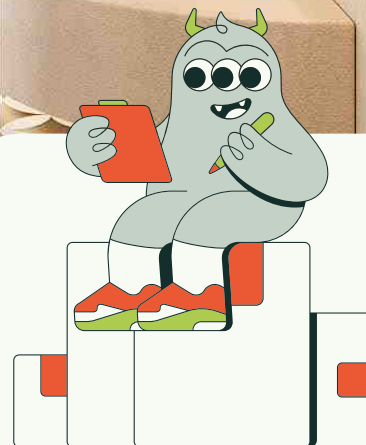
## Membership Plan Benefits:

- No long-term contracts (0-3m, 4-6m, 7-9m, 10-12m, 13+m pricing).
- Transparent monthly fee (inc. all bills + utilities).
- Free daily coffee & herbal tea.
- Hassle-free credit card, cash, check & ACH payment options each month.
- Community networking events.
- Free event space inc. for 1st month (\$1275 value).
- \$200 room booking/ \$100 printing credits.
- 24/7 Access for you and your guests.
- Size up or down as you grow with 30 days notice.
- Discount for multiple inventory spaces.

Secure your space now with 2x months deposit, first month upfront and a \$150 set up fee.

Pricing provided during tour session.

loloft®



Contact us to secure your Loloft space and membership today.



+1 479 208 6499



[info@loloft.com](mailto:info@loloft.com)