



Main Room (5,000 sq ft) *Excluding Stage*

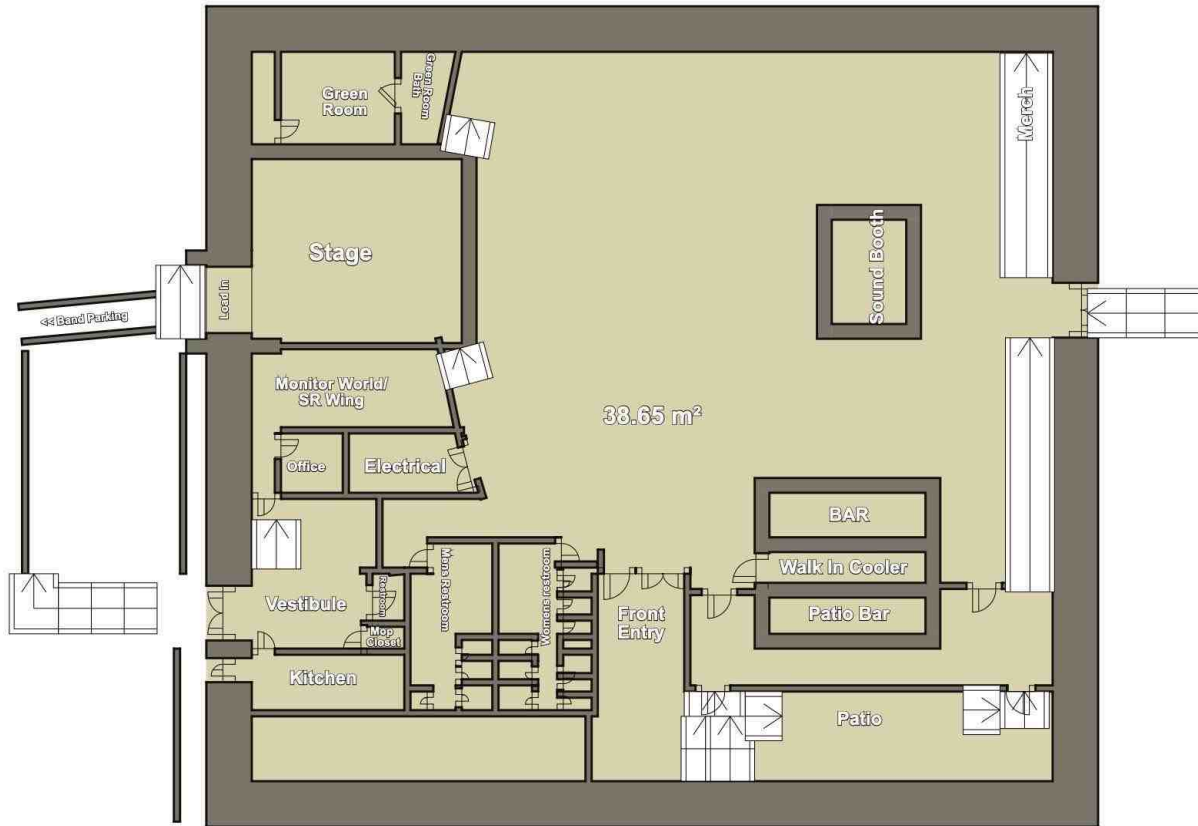
Set Up Style	Max Number of Attendees
Banquet (No Buffet)	200
Banquet with 14'x14' Dance Floor (No Buffet)	180
Banquet w/ Buffet	180
Ceremony & Reception	110
Standing	1,200
Theatre	400

*To accommodate seating for 400 or more, we can do partial seating and set out more cocktail tables - (Ideal for Holiday Parties)

- Pricing will vary by exact space and date. Please inquire for pricing and availability
- Tables and chairs must be sourced from a third-party rental service
- Audiovisual equipment is available for rent
- A \$1,000 non-refundable retainer is required to secure your event, an additional damage deposit may be required
- Building access is 4-10 hours based on needs. Additional hours may be purchased in advance for \$150 per hour
- Catering must be ordered through a third party (we can also handle all catering for a 20% upcharge)
- Service Fee and Taxes apply
- Security is mandatory for all events where alcohol is served
- Prices are subject to change without notice

Detailed meeting space requirements will be finalized in collaboration with the event manager.

Room Specifics



Parking

We are located at 1022 Senate Street in downtown Columbia's Vista neighborhood, where plenty of parking garages, lots and street parking is on hand nearby. In addition to our own parking lot onsite with limited spaces, two of the many parking garages nearby include 1007 Park St and 851 Park St.

Main Room

Spacious, modern design with a large stage and professional sound and lighting systems. Its flexible layout and vibrant atmosphere make it an ideal space for any occasion, whether hosting live entertainment or a formal gathering.

Green Room/Bridal Suite

Private, comfortable space designed for relaxation and preparation. With cozy seating and a peaceful atmosphere, it offers a quiet retreat for guests to unwind and get ready.

Outdoor Patio

Offers a relaxed, open-air setting with comfortable seating and a welcoming ambiance. Perfect for enjoying fresh air, mingling, or adding an element of charm to any event, it complements the venue's dynamic atmosphere.



DIRECTIONS

The Senate
1022 Senate Street - Columbia, SC 29201
803-252-9392

From I-26 From Charleston

(Includes Baton Rouge, Texas and all points west of New Orleans)

- Head Northwest on I-26 W
- Take Exit 72 for SC-121 toward Whitemire/Union
- Turn left on SC-121 S
- Merge onto I-26 E via the ramp to Columbia
- Keep left at the fork to continue on US-76E follow signs for I-26/Downtown/Columbia
- Continue onto I-26 E/US-76-E
- Take the exit toward Huger Street and continue on Huger St
- Turn left onto Gervais Street
- Turn right onto Park Street

I-20 from Atlanta

(Includes Mississippi Gulf Coast, Florida, and all points east of New Orleans)

- Get on I-20 W
- Follow I-20 W to SC-277 S
- Continue on SC-277. Take Bull St. to Senate St.



Hotels and Restaurants Nearby

Hilton Garden Inn
Hyatt Place
Double Tree by Hilton Hotel

The Hollow
Ambrosia Taverna
Ruth Chris Steakhouse
929 Kitchen and Bar
Market on Main
Bourbon
Mr. Friendly's New Southern Cafe
Chick-Fil-A



The Senate | Bar Package Pricing

Bar Packages Available

All packages include setup, bar tools, ice, garnishes, plastic cups, napkins, and TIPS-certified bartenders.

Packages available for **4-hour service** and **6–10 hour events**. Pricing ranges below reflect options for either value or premium selections within each package.

Additional Costs:

- **\$100 per bartender** (4-hour minimum)
- **1 bartender per 75 guests**
- **20% gratuity** will be added to all hosted bar packages
- **14% alcohol tax** applies to hosted and cash bars

4-Hour Hosted Bar Packages

1. Beer & Wine Bar

\$15–17 per guest

Includes:

- 2 Domestic Beers (Bud Light, Michelob Ultra)
- 1 Premium/Local Beer (Columbia Craft, Westbrook)
- 2 House Wines (Chardonnay, Cabernet Sauvignon)
 - *Value brands: Woodbridge, Barefoot, Yellow Tail*
 - *Premium brands: Josh Cellars, Kendall-Jackson, Whispering Angel (rosé)*
- Soft Drinks (Coke, Diet Coke, Sprite, Ginger Ale, Club Soda)

2. Standard Full Bar

\$18–20 per guest

Includes Beer & Wine plus:

- 4 Standard Liquors (vodka, rum, tequila, whiskey)
 - *Value-tier: Smirnoff, Seagram's, Montezuma, Evan Williams*
 - *Premium-tier: Tito's, Bacardi, Jose Cuervo, Jim Beam*
- Full mixer setup & garnishes



3. Premium Full Bar

\$21–23 per guest

Includes:

- Beer & Wine Bar items (with upgraded wines if desired)
- 5–6 Premium Spirits:
 - *Grey Goose or Ketel One (vodka)*
 - *Hendrick's or Tanqueray (gin)*
 - *Don Julio or Casamigos (tequila)*
 - *Bulleit or Woodford Reserve (bourbon)*
 - *Glenlivet or Johnnie Walker Black (scotch)*
- Premium mixers and garnishes

6–10 Hour Hosted Bar Packages

1. Beer & Wine Bar

\$22–24 per guest

Includes same as 4-hour package, extended for full event coverage

2. Standard Full Bar

\$26–28 per guest

Includes same selections as 4-hour version, with choice of value or premium brand spirits

3. Premium Full Bar

\$30–32 per guest

Full-service bar with premium liquors for all-day events, brand selections as listed above

Cash Bar Option

Setup Fee: \$500

Bartenders: \$100 each (4-hour minimum)

1 bartender per 75 guests

20% gratuity + 14% alcohol tax apply

***As stated in our contract, The Senate must serve/pour alcoholic beverages. The Senate reserves the right to refuse to any persons who our trained bartenders and Event Managers deem excessively intoxicated.**

**The Senate requires security at all events when alcohol is served.
(Bar Packages will be updated end of May 2025)**



AUDIOVISUAL

Our venue is equipped with top-of-the-line AV equipment to ensure your event runs smoothly. We provide **2 wireless handheld microphones**, **30 microphone stands** (22 tall and 8 short), and **2 projector screens** for presentations, performances, or other multimedia needs. Additional AV equipment is available upon request, and for more information.