

**CRYSTAL RIDGE**  
DISTILLERY

# Venue Overview

[events@crystalridgedistillery.com](mailto:events@crystalridgedistillery.com)

501-627-0722



@crystalridgeevents



Crystal Ridge Distillery Events

*Crystal Ridge Distillery*

455 Broadway St.

Hot Springs National Park, AR 71901



[CrystalRidgeDistillery.com](http://CrystalRidgeDistillery.com)

At Crystal Ridge Distillery, we understand that every event is special and unique. Our dedicated team is committed to providing you with exceptional service and a seamless experience from start to finish.

We've put together an overview of the services we offer that would best meet your needs based on our previous experiences. You will find information about our venue spaces, rental options and the amenities we offer.

We invite you to explore the possibilities and imagine the countless memories that will be made here. Should you have any questions or need further assistance, please don't hesitate to contact us. We are excited to work with you and make your event truly unforgettable.



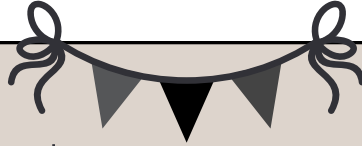
*Danny & Mary Bradley - Owners*  
and the Crystal Ridge Venue Team



[CrystalRidgeDistillery.com](http://CrystalRidgeDistillery.com)

# Venue Rates

for Private Events



## Small Venue Space

1,200 sq. ft  
(up to 50 people)

\$175/hour  
minimum of 2 hours

## Medium Venue Space

2,400 sq. ft  
(up to 100 people)

\$350/hour  
minimum of 4 hours

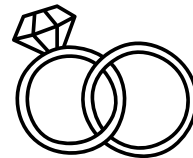
## Large Venue Space

3,600 sq. ft  
(up to 300 people)

\$450/hour  
minimum of 4 hours

# Venue Rates

for Wedding Receptions



## Medium Venue Space

2,400 sq. ft  
(up to 100 people)

12-hour rental- \$3,000

## Large Venue Space

3,600 sq. ft  
(up to 250 people)

12-hour rental- \$3,600

# Amenities

## SETUP & SERVICE

- CUSTOMIZED ROOM LAYOUT
- SETUP & BREAKDOWN OF TABLES & CHAIRS
- VENUE STAFF AVAILABLE ON-SITE
- PERSONALIZED BARTENDING SERVICE:  
BARTENDER, STOCKED BAR & CUSTOMIZED BAR MENU



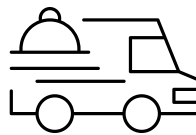
## FURNITURE & DECOR

- 6FT & 8FT RECTANGULAR TABLES
- 5FT ROUND TABLES
- WHITE BANQUET CHAIRS
- WHISKEY BARRELS



## CATERING FACILITIES

- CATERING PREP KITCHEN:  
COMMERCIAL ICE MAKER, FOOD WARMER, COOLER AND SINKS



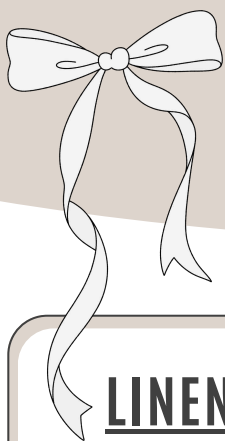
## VENUE FEATURES

- ON-SITE PARKING
- COVERED PATIO W/SEATING, BISTRO LIGHTS & FANS
- ADJUSTABLE LIGHTING THROUGHOUT THE VENUE
- FULL BLUETOOTH AUDIO SYSTEM W/WIRELESS MICROPHONE & TV'S
- 3,600 SQ. FT OF HEATED & COOLED VENUE SPACE



CrystalRidgeDistillery.com

CONTACT:



# ADD - ONS

## **LINENS** (\$20 per linen)

- Polyester Colors: Ivory, White, Black, Navy Blue, Blush, Light Beige, Silver, Emerald Green, Pewter, Red, Sage & Willow
- Velvet Colors: Champagne, Emerald Green & Navy Blue

## **GAMES PACKAGE** (\$50 for all)

- Giant Jenga
- Giant Connect 4
- Baggo Bean Bag Toss

## **PORTABLE STAGE** (\$25 per 6ft x 8ft piece)

- Full Stage Dimensions: 24ft x 12ft    \*Includes Skirting

### **ADDITIONAL EQUIPMENT**

- Podium: \$25

## **STAFFING OPTIONS**

- Additional Bartender: \$50/Hour
- Dining Assistant: \$50/Hour

# Overview of Process



## **SECURE YOUR DESIRED DATE AND TOUR OUR VENUE:**

Congratulations on considering our venue for your special event! Start by securing your preferred date. Once availability is confirmed, we'll invite you for a personalized tour of our stunning historic venue. During the tour, you'll explore our facility, including our production area and tasting bar where you can sample some of our moonshine and canned vodka cocktails. Our dedicated team will be on hand to answer any questions and show you how our venue can be tailored to suit your event's unique vision.

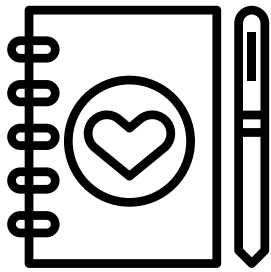
## **FINALIZE YOUR BOOKING:**

Once you are ready to move forward, we will finalize your booking with a contract and deposit. The contract outlines all the event details, ensuring transparency and peace of mind. The \$500 deposit will be applied toward your final balance, which is due in full 30 days prior to your event. After signing the contract and submitting the deposit, your date will be officially reserved.

## **PLAN YOUR PERFECT EVENT:**

With your date secured, it's time to dive into the planning process! Our experienced Venue Team will provide personalized guidance every step of the way to ensure every detail is flawless. From vendor recommendations to crafting signature cocktails and designing customized room layouts, we're here to make your event truly unforgettable. Our team is committed to tailoring every aspect of your event to exceed your expectations.

# VENDOR RECOMMENDATIONS:



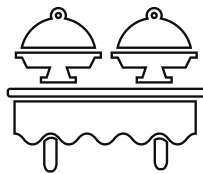
## EVENT COORDINATORS/PLANNERS

Signature Events- Randi Slick  
LuLu's Events- Amy Lusby  
CTM Images & Events- Kelly Aubuchon



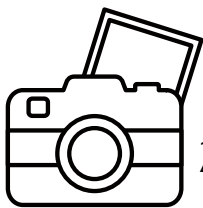
## FLORIST

Lepine's Wedding & Event Florals  
Johnson Floral Company  
Flowers & Home- Hot Springs  
Kelly Efird Flowers & Events



## CATERING

Hot Springs Catering Company  
Vibrant Occasions  
Catering Temptations



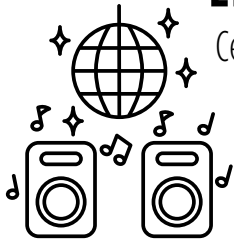
## PHOTOGRAPHERS

Avis Rubra Photography  
Hannah Capps Photography  
25 Mockingbird Photography



## BAKERIES

Destiny's Bakeshop  
Sweets by Logan  
Ambrosia Bakery



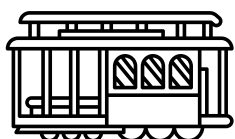
## ENTERTAINMENT

Central AR Entertainment  
Brock Entertainmentt  
DJ Xavier  
Jacob Flores



## RENTALS

Signature Events  
Eventology  
Mirror Memories Photo Booth  
Central Arkansas Entertainment



## TRANSPORTATION

Arkansas Destination Trolley  
Hot Springs Trolley



## LIVE ART & ACCENTS

Cory Tanner Cangelosi  
Abigail Fowler Designs

Balloonish

